

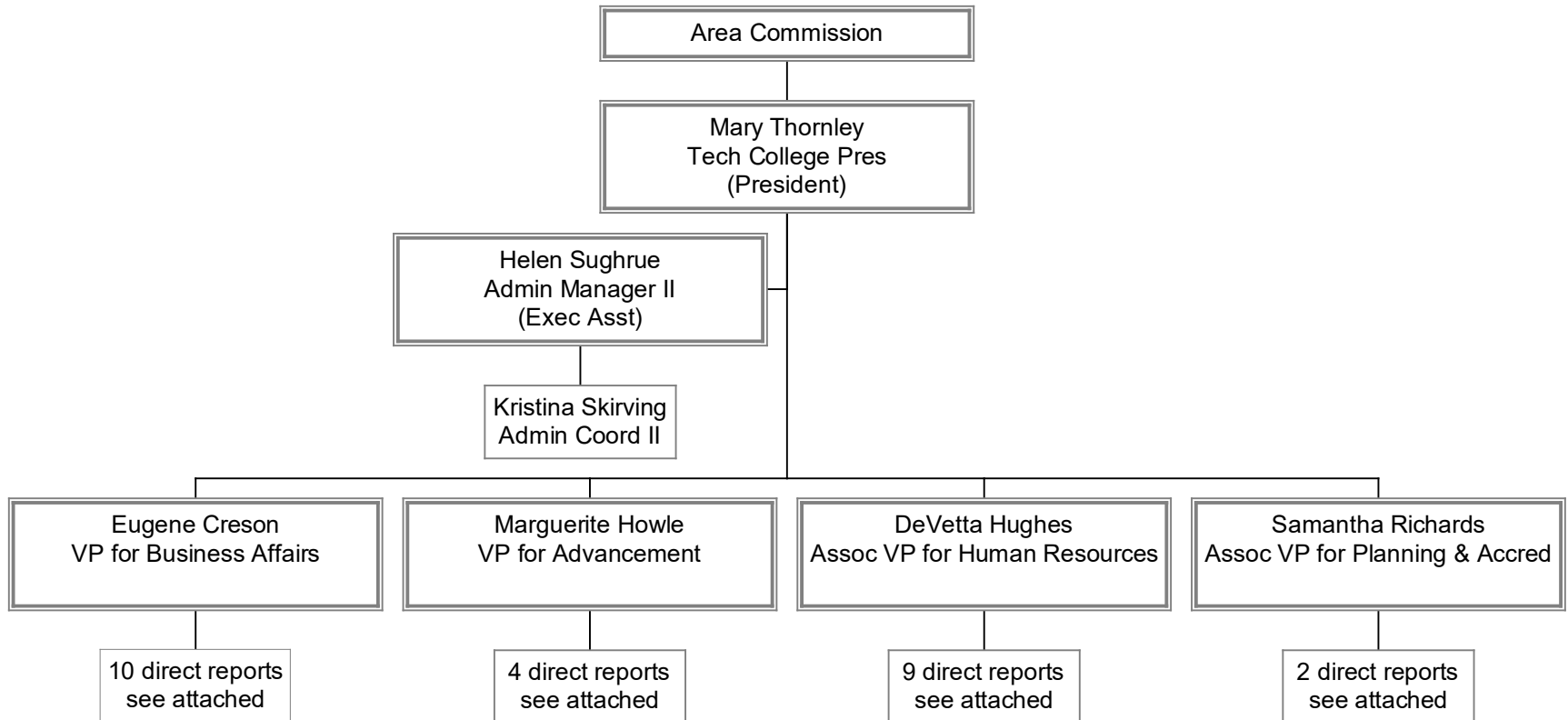
# Organizational Chart

- **President's Office** (Dr. Mary Thornley)
  - Human Resources (Mrs. DeVetta Hughes)
  - Planning & Accreditation (Mrs. Samantha Richards)
- **Academic Affairs** (Dr. Laurie Boeding)
  - Business Technology
  - Culinary Institute of Charleston
  - Business Technology & The Online College
  - Engineering and Construction
  - Film, Media and Visual Arts
  - Health Sciences
  - Humanities and Social Sciences
  - Law Related Studies
  - Manufacturing and Maintenance
  - Nursing
  - Science and Mathematics
- **Community and Continuing Education** (Ms. Melissa Stowasser): Community Partnerships and Education Services
- **Advancement** (Mrs. Marguerite Howle): Public Information and Graphics Design (Marketing)
- **Development** (Mrs. Lisa Piccolo)
- **Business Affairs** (Mr. Eugene Creson): Bookstore; Economic Development; Facilities Management; Facility Services; Finance; Procurement; and Public Safety
- **Student Services** (Dr. Patrice Davis): Enrollment Management; Student Development; Registrar's Office; and Student Services
- **Student Engagement & Success** (Dr. Karen WRIGHT): Educational Opportunity Programs; Student Engagement; Recruitment and Student Employment Services; Admissions; and Student Success
- **Information Technology** (Mr. Marvin "MG" Mitchum): Operations; Programming; Endpoint Services; Customer Services Support; Audio Visual Services; Network Support; Datacenter Support; and Security Services

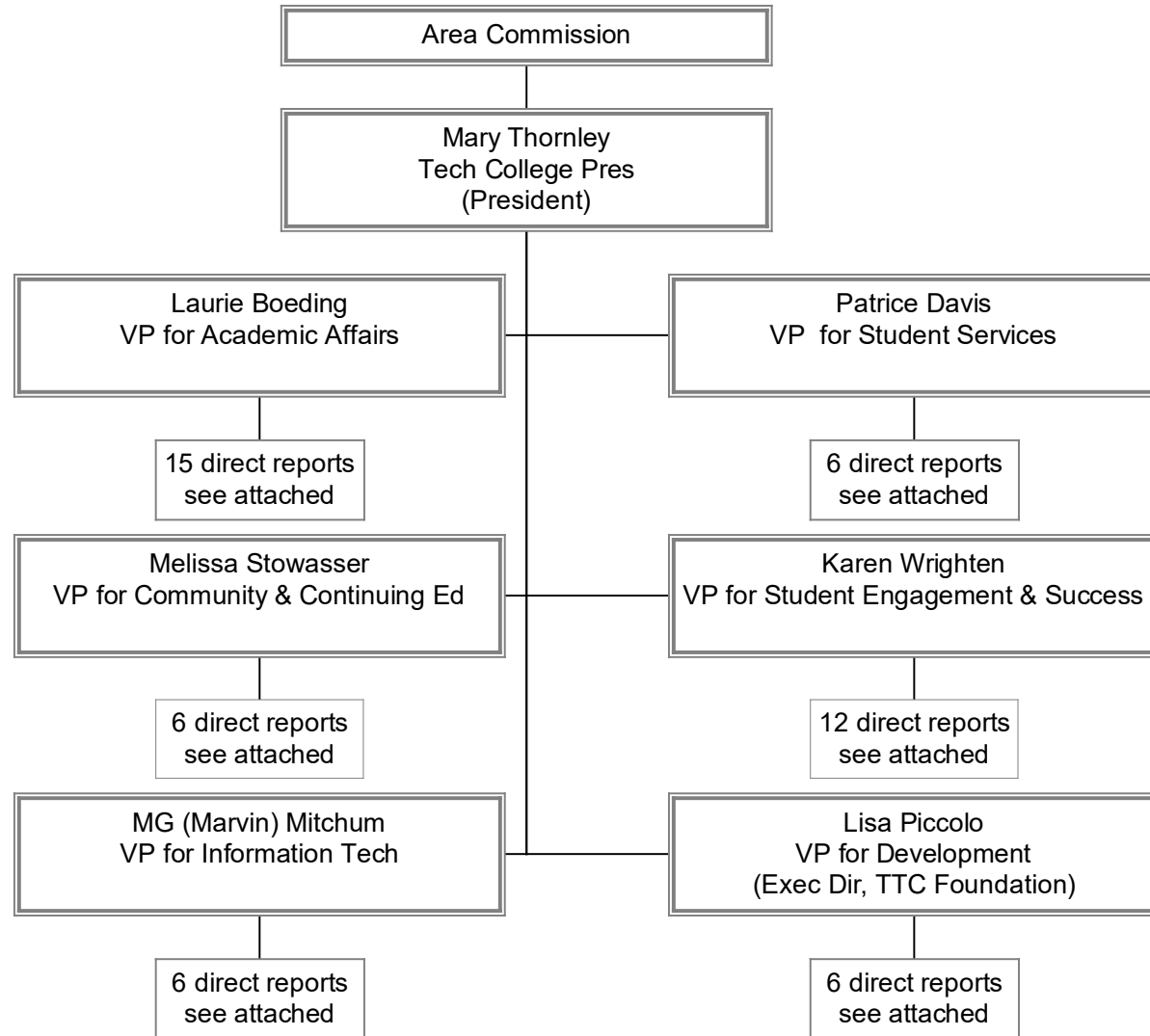
**KEY:**

Box with double line = Supervisor

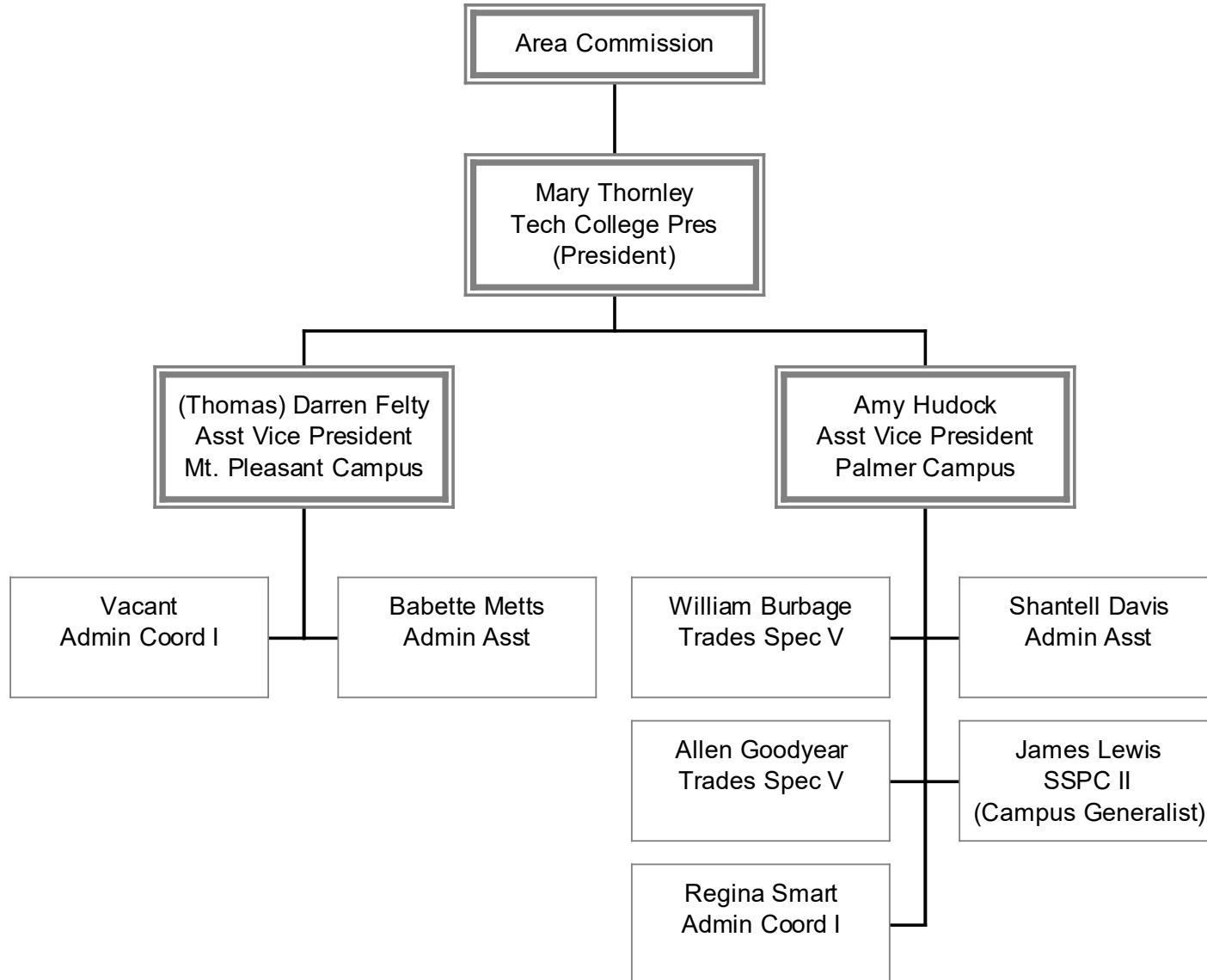
# President's Office



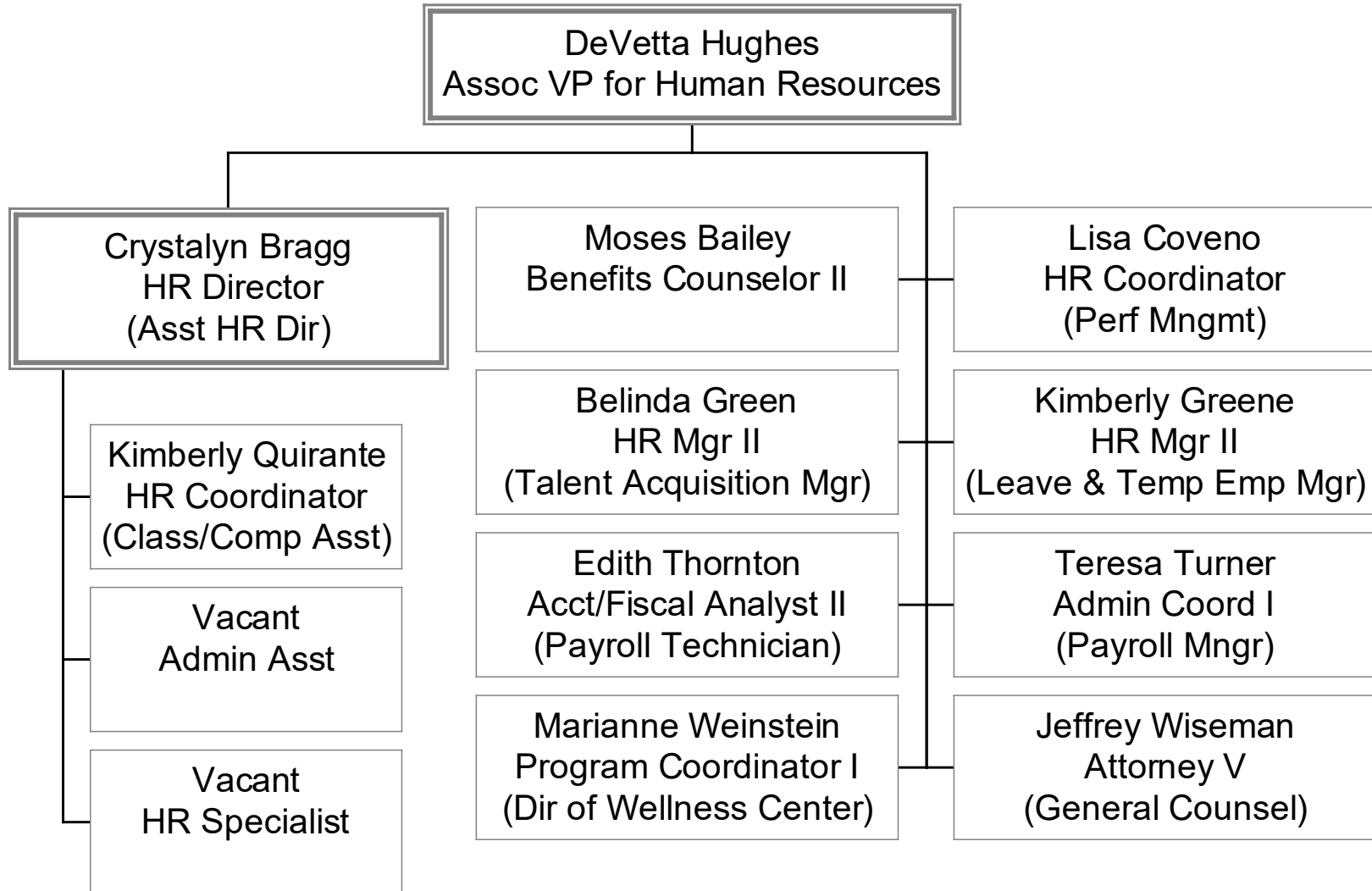
# President's Office



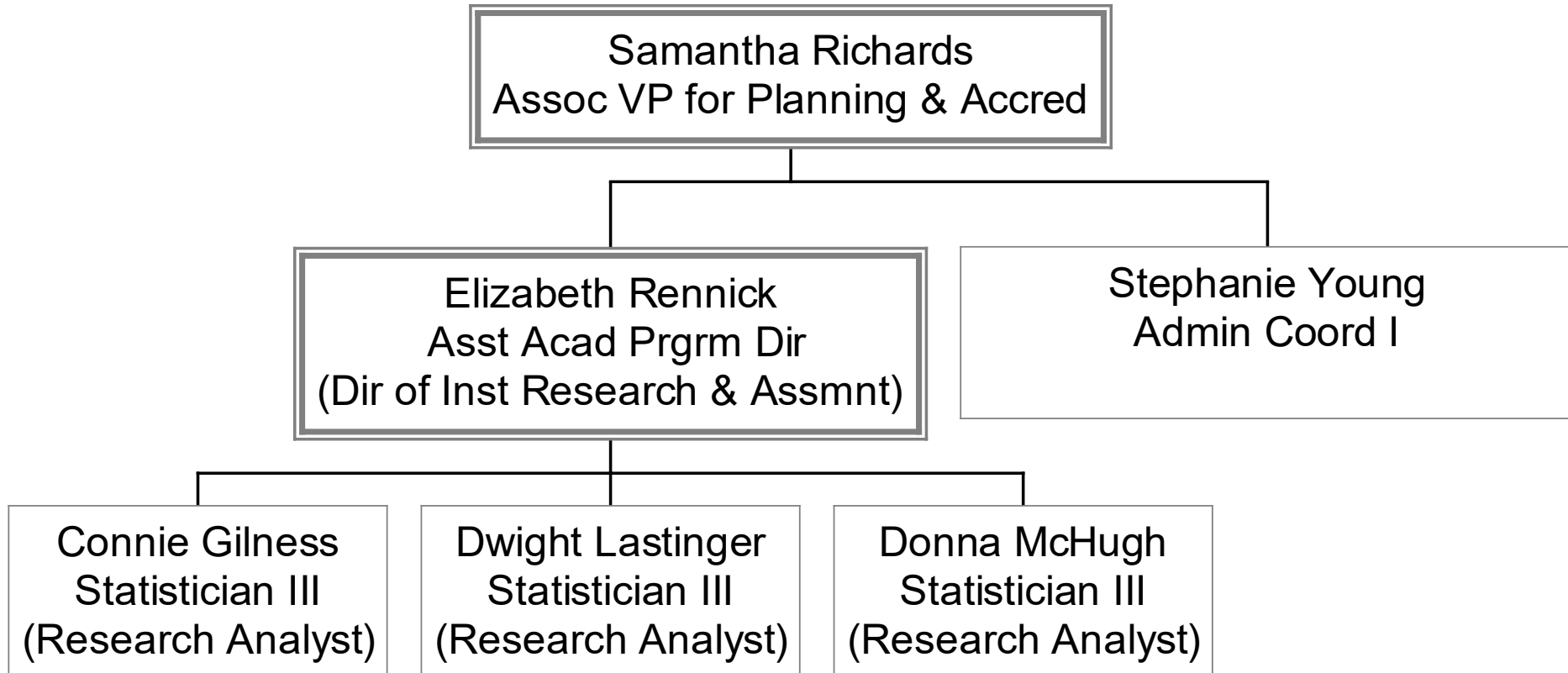
# President's Office



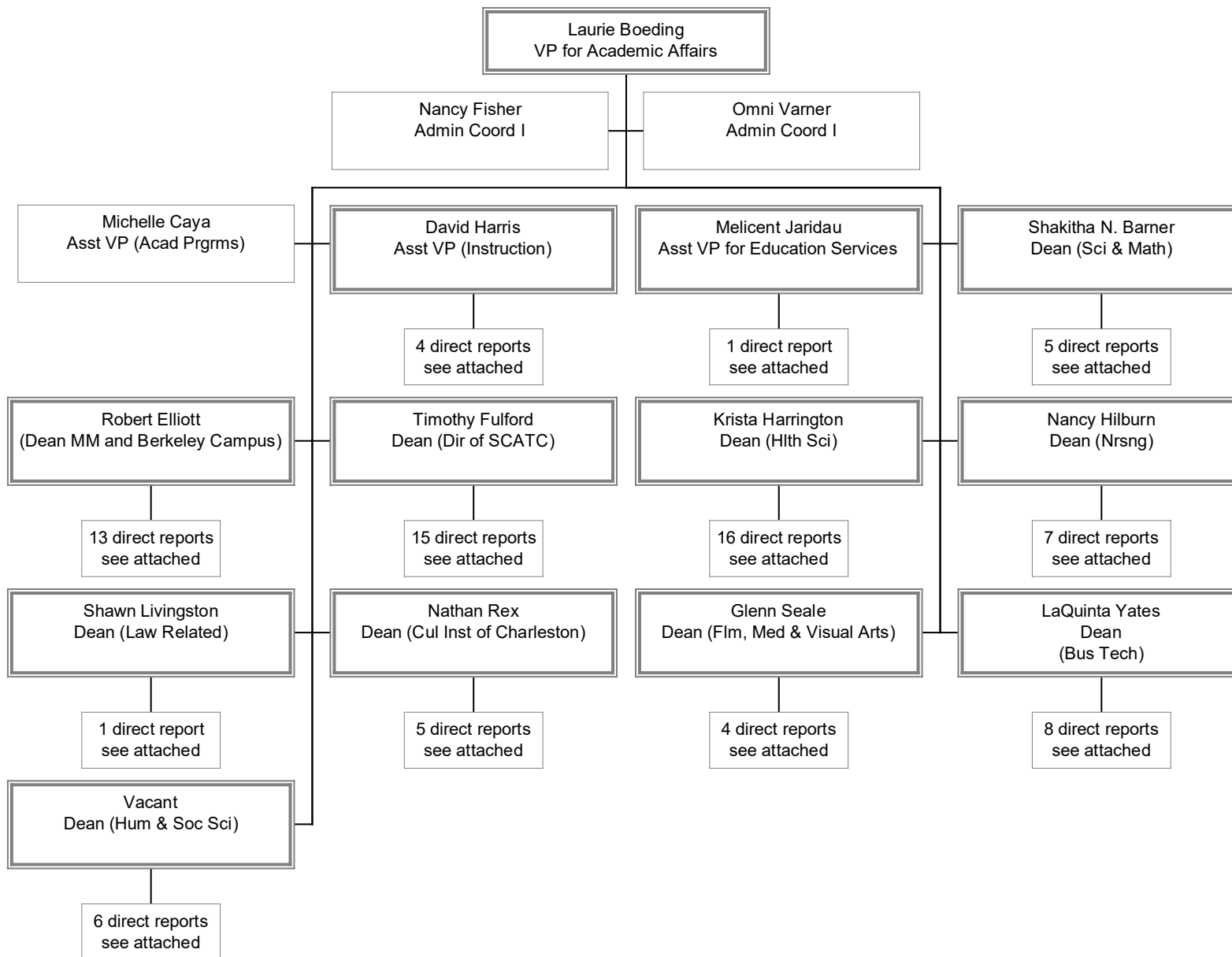
# Human Resources



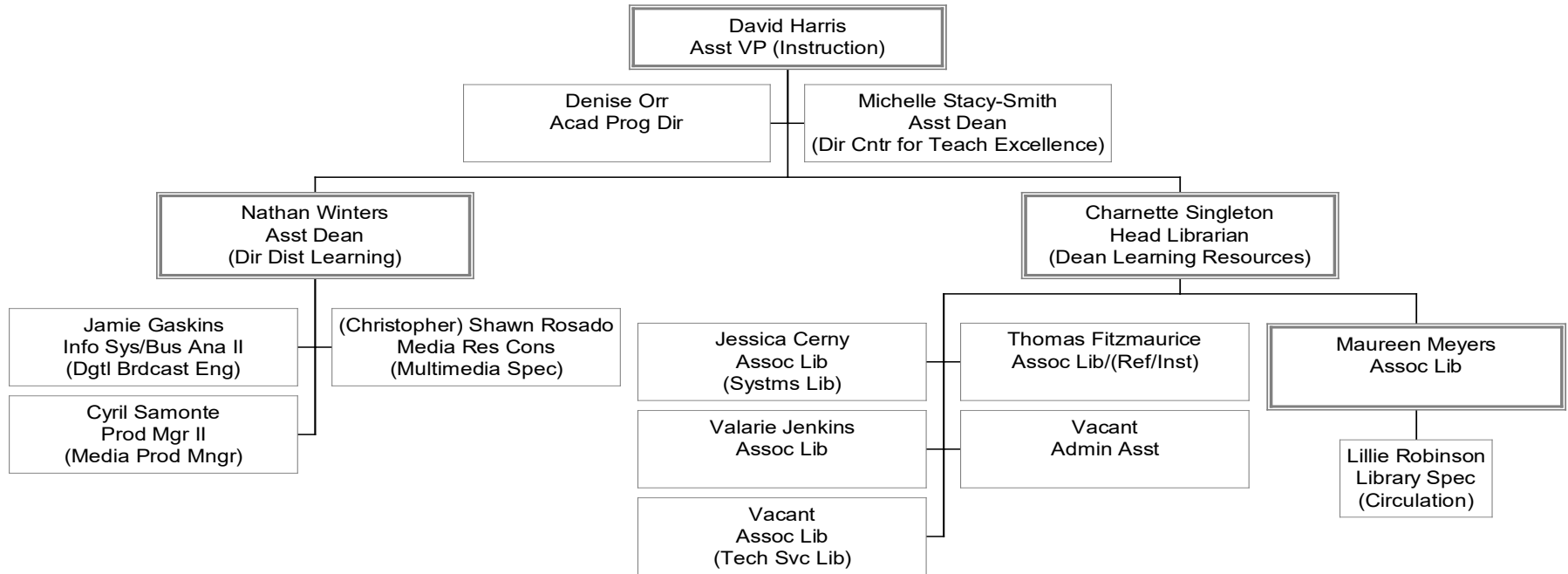
# Planning and Accreditation



# Academic Affairs

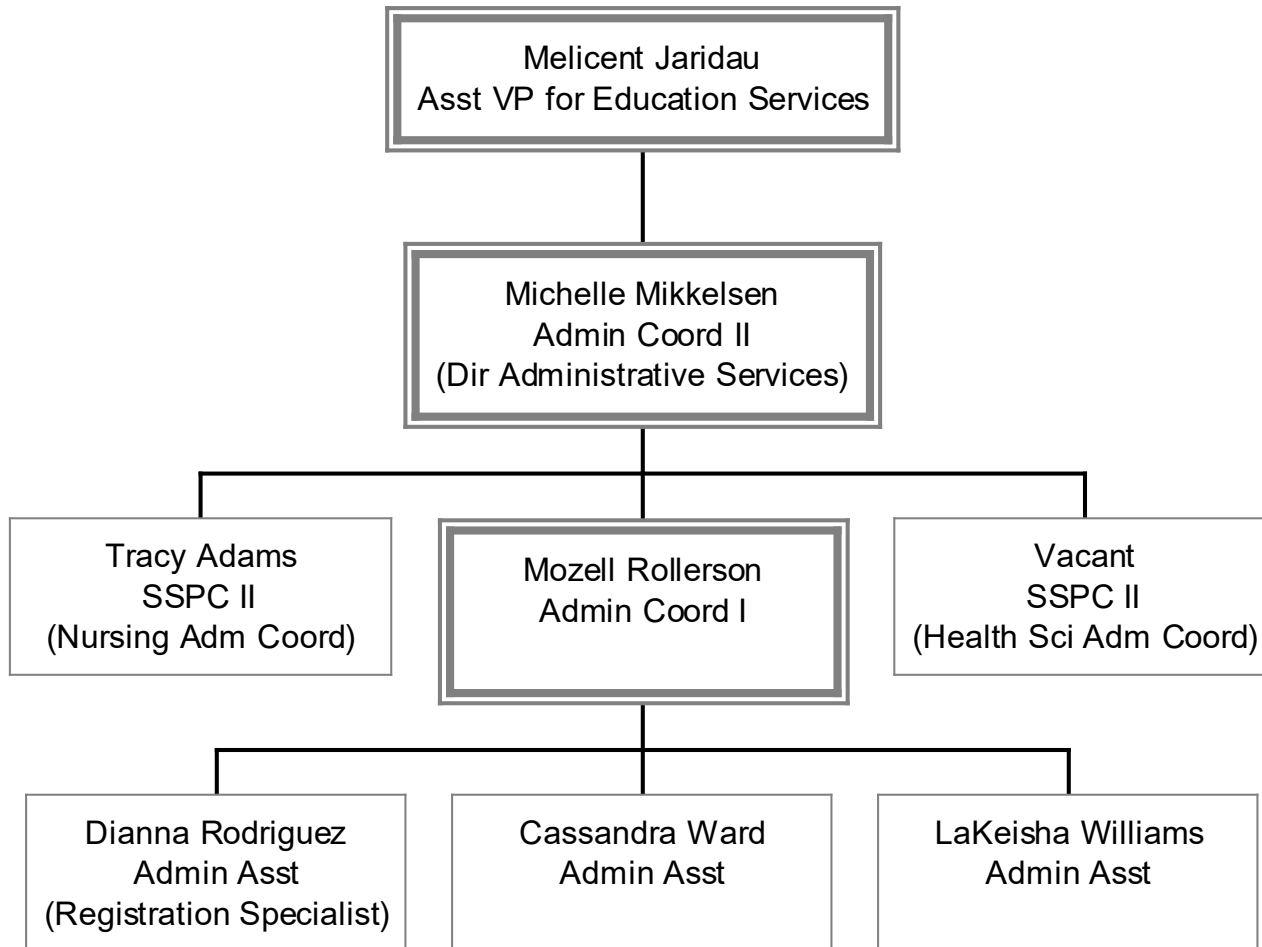


# Academic Affairs



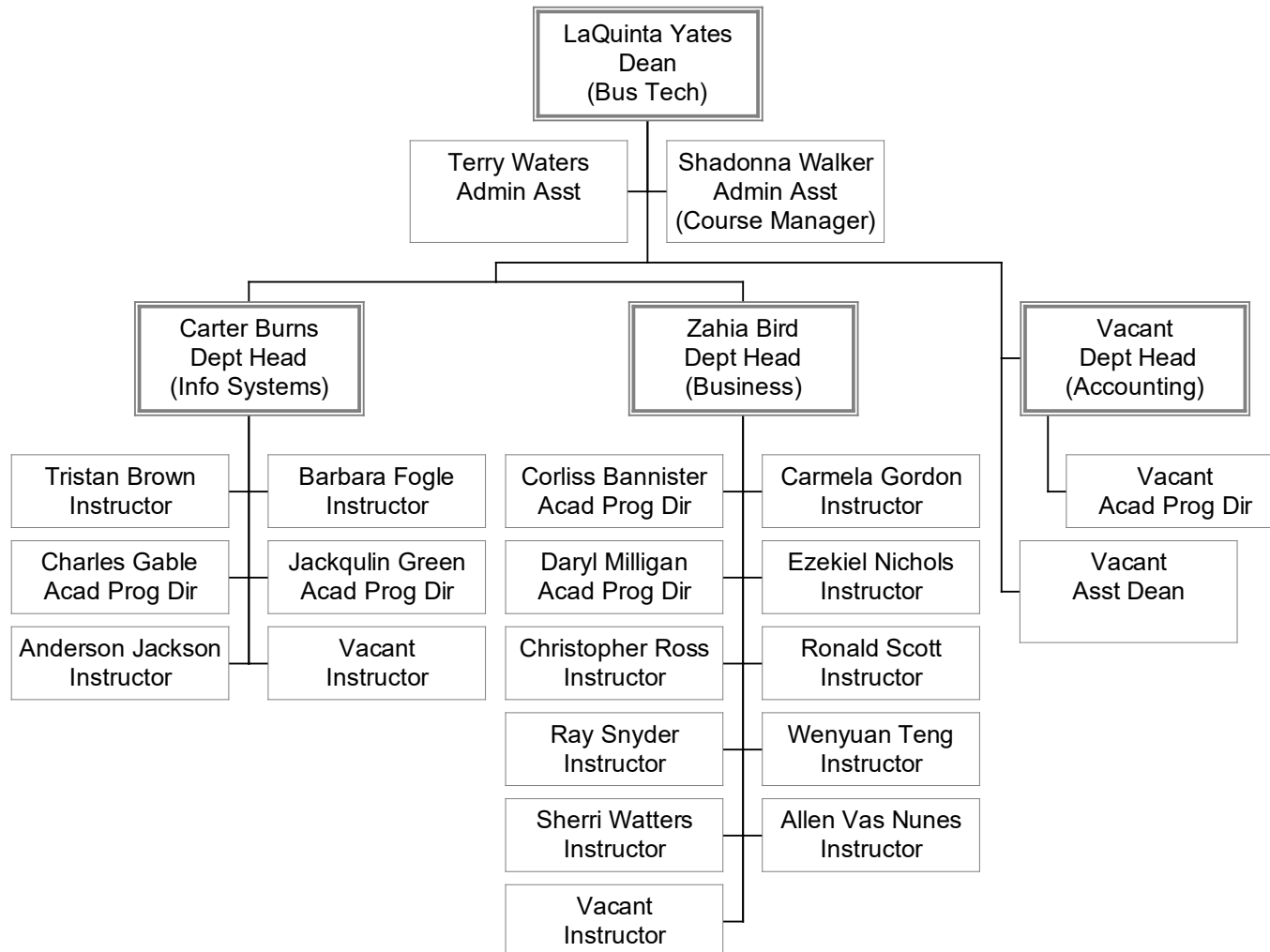


# Academic Affairs



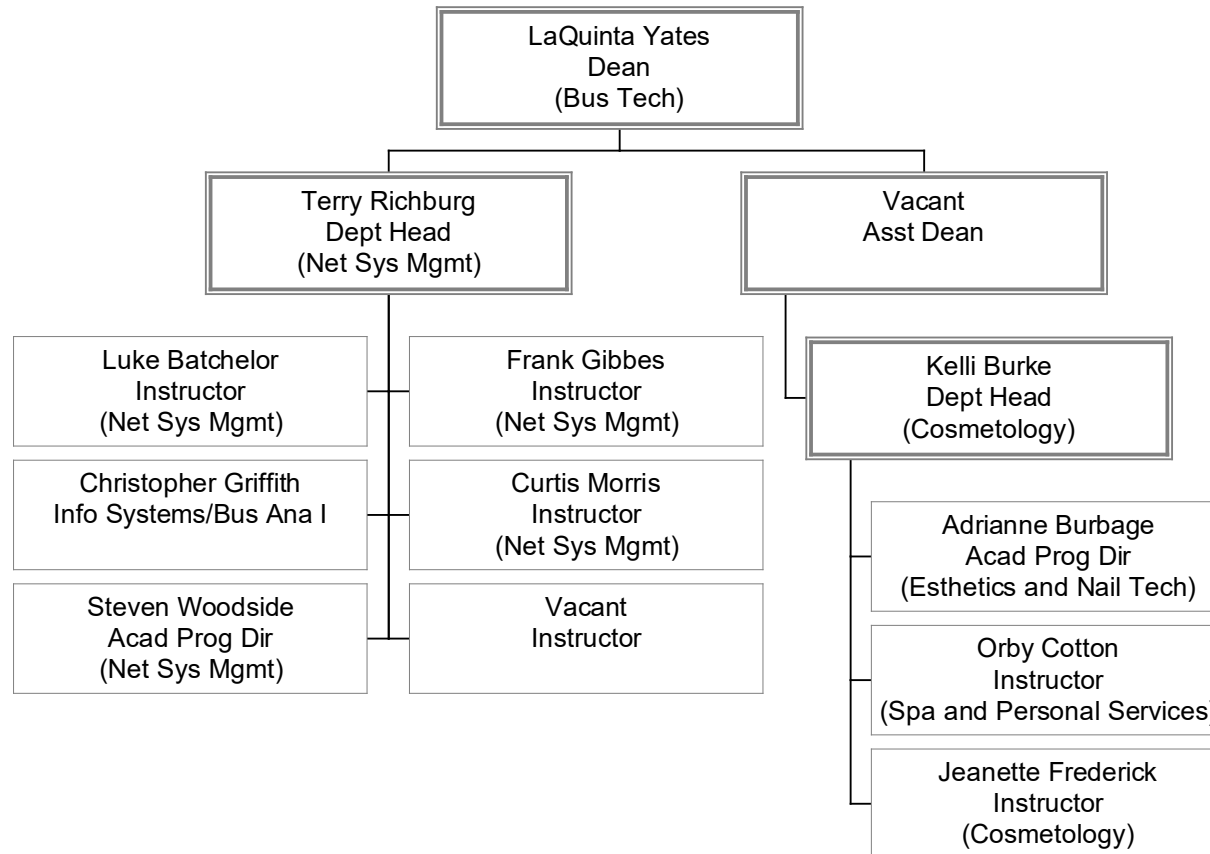
# Business Technology

## (a unit of the Division of Academic Affairs)



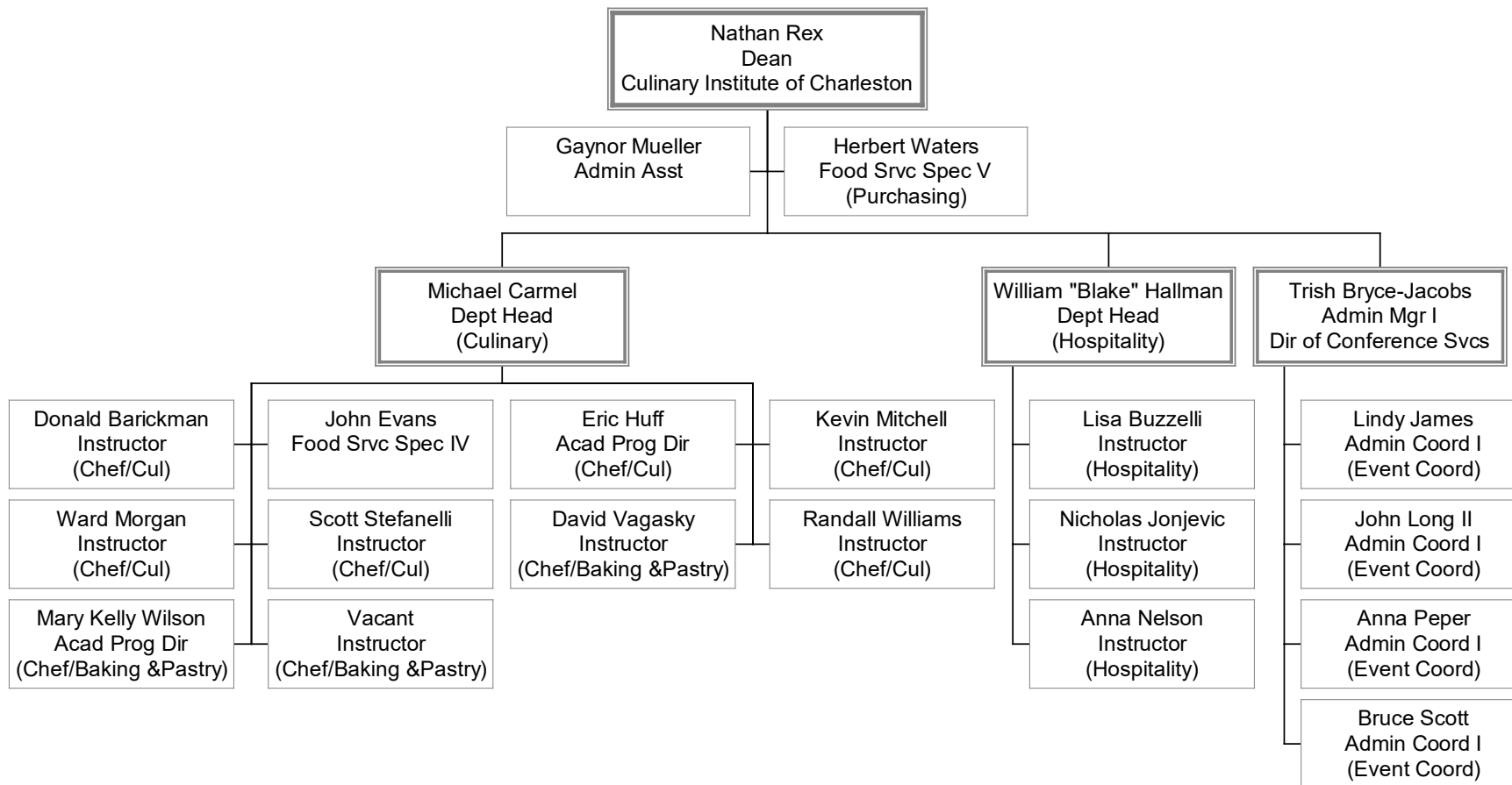
# Business Technology

## (a unit of the Division of Academic Affairs)



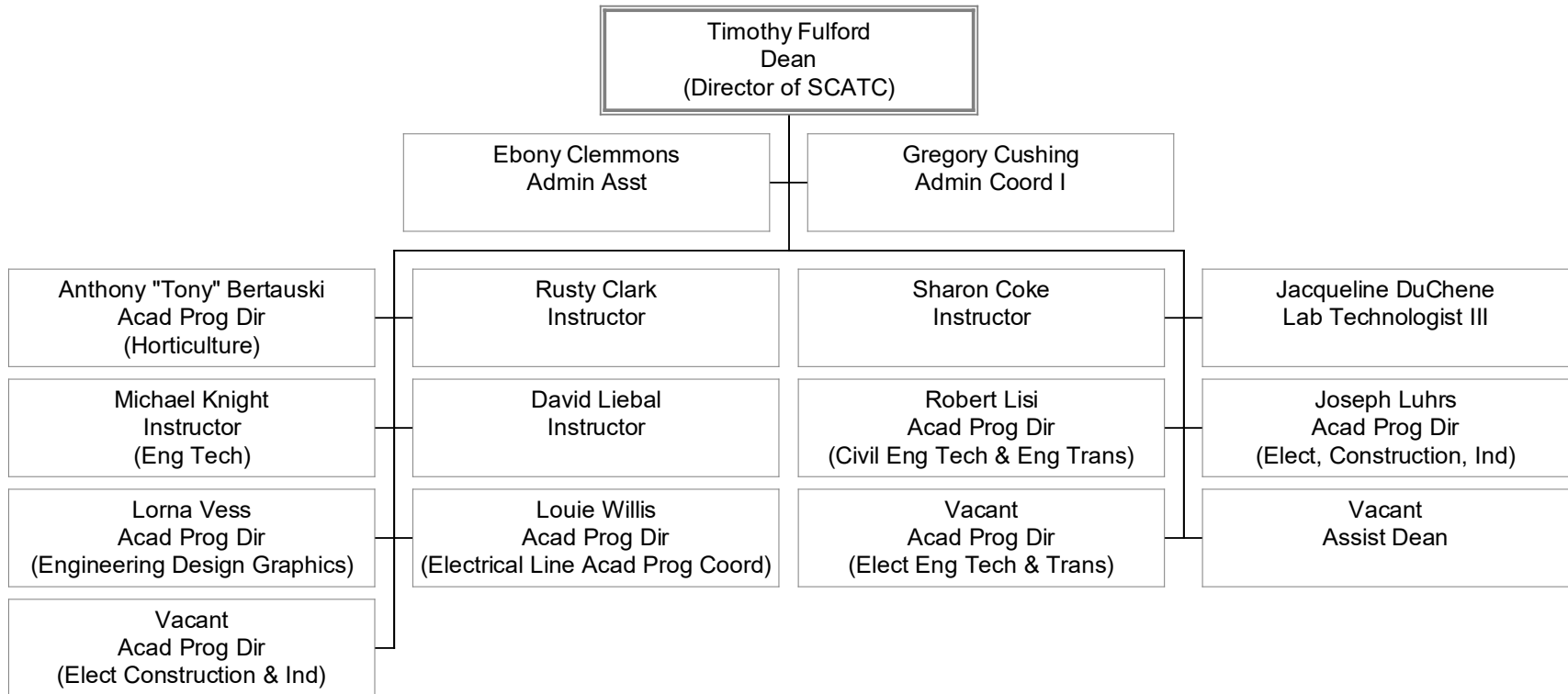
# Culinary Institute of Charleston

## (a unit of the Division of Academic Affairs)



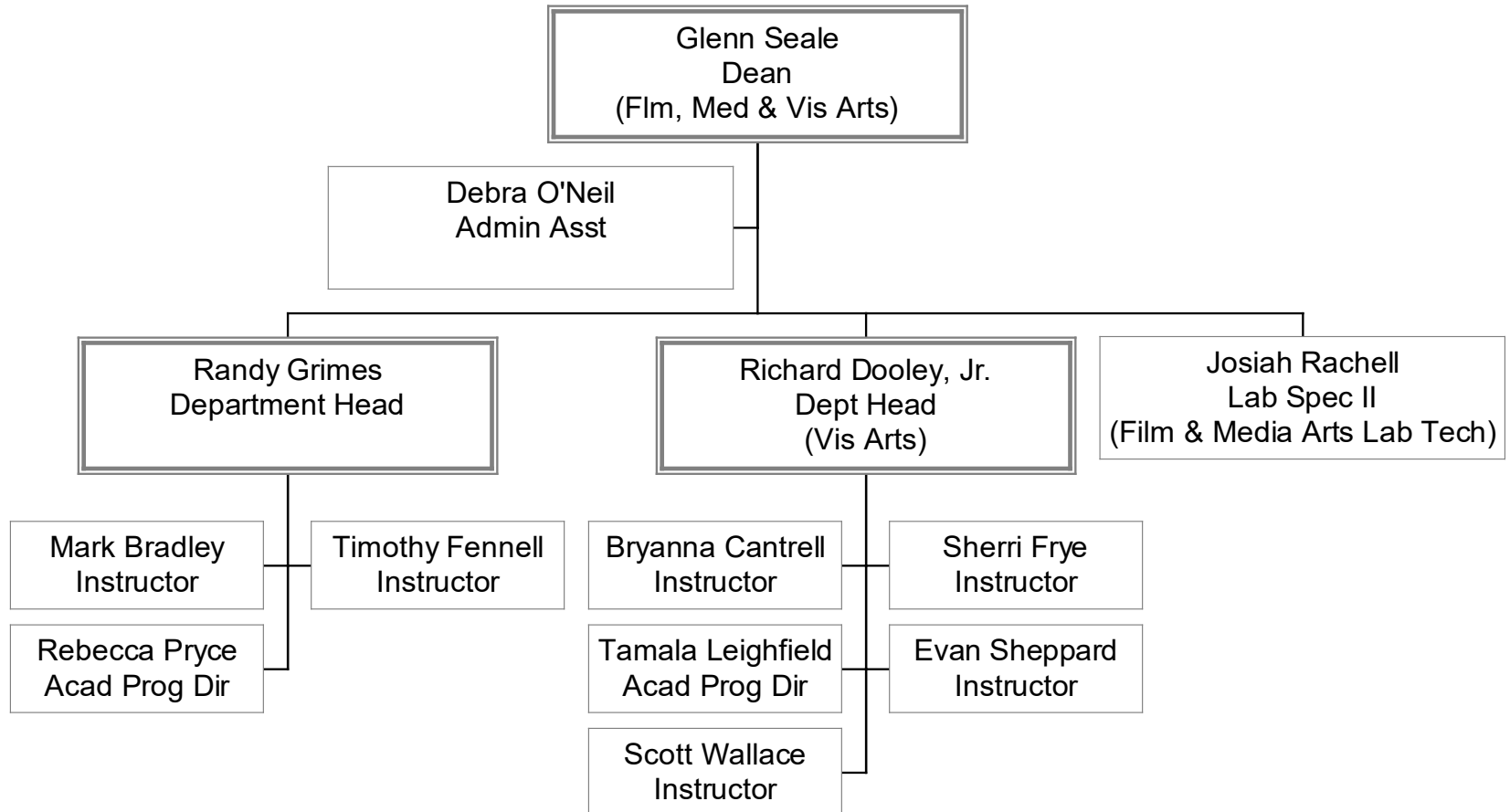
# Engineering & Construction

## (a unit of the Division of Academic Affairs)



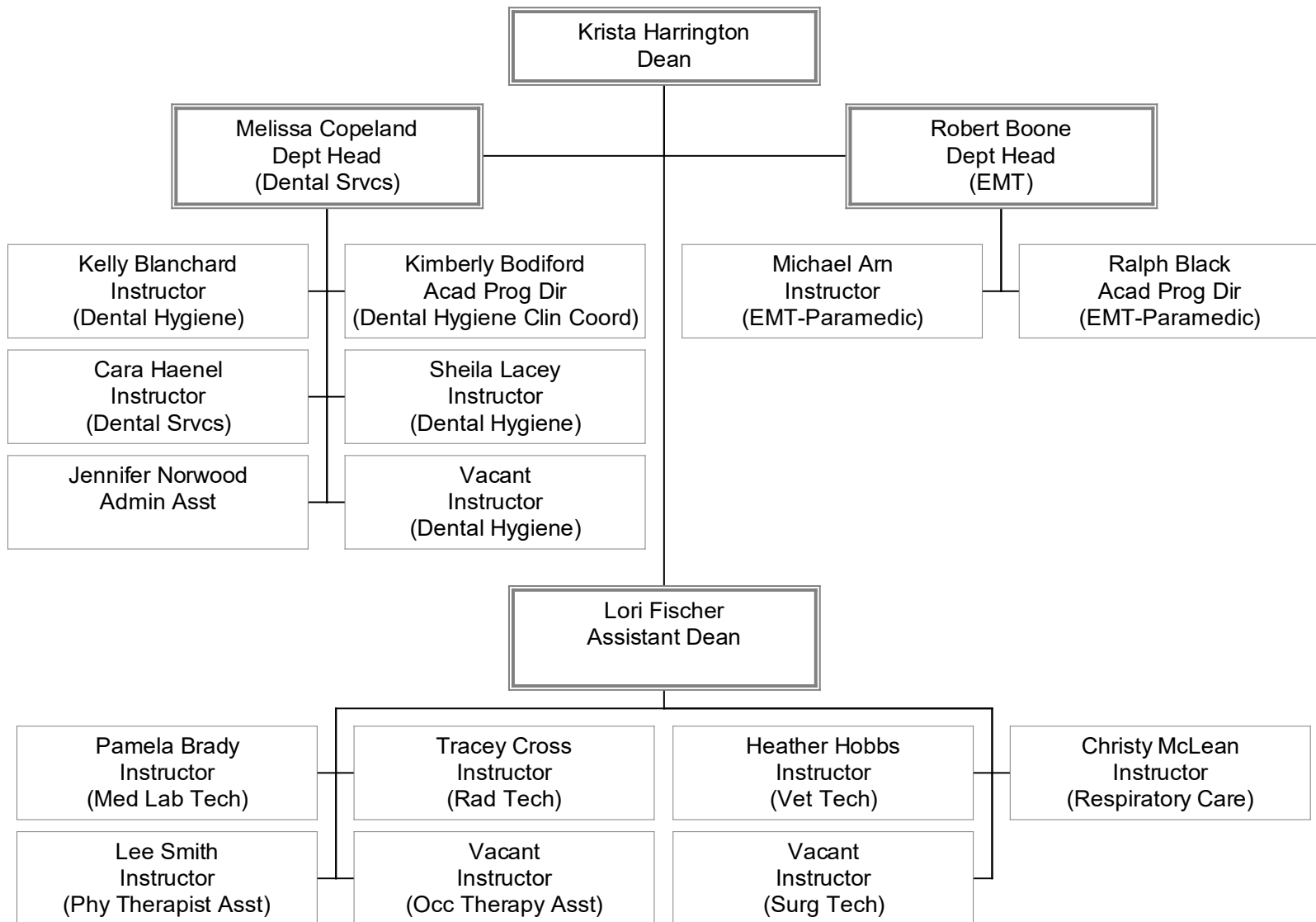
# Film, Media and Visual Arts

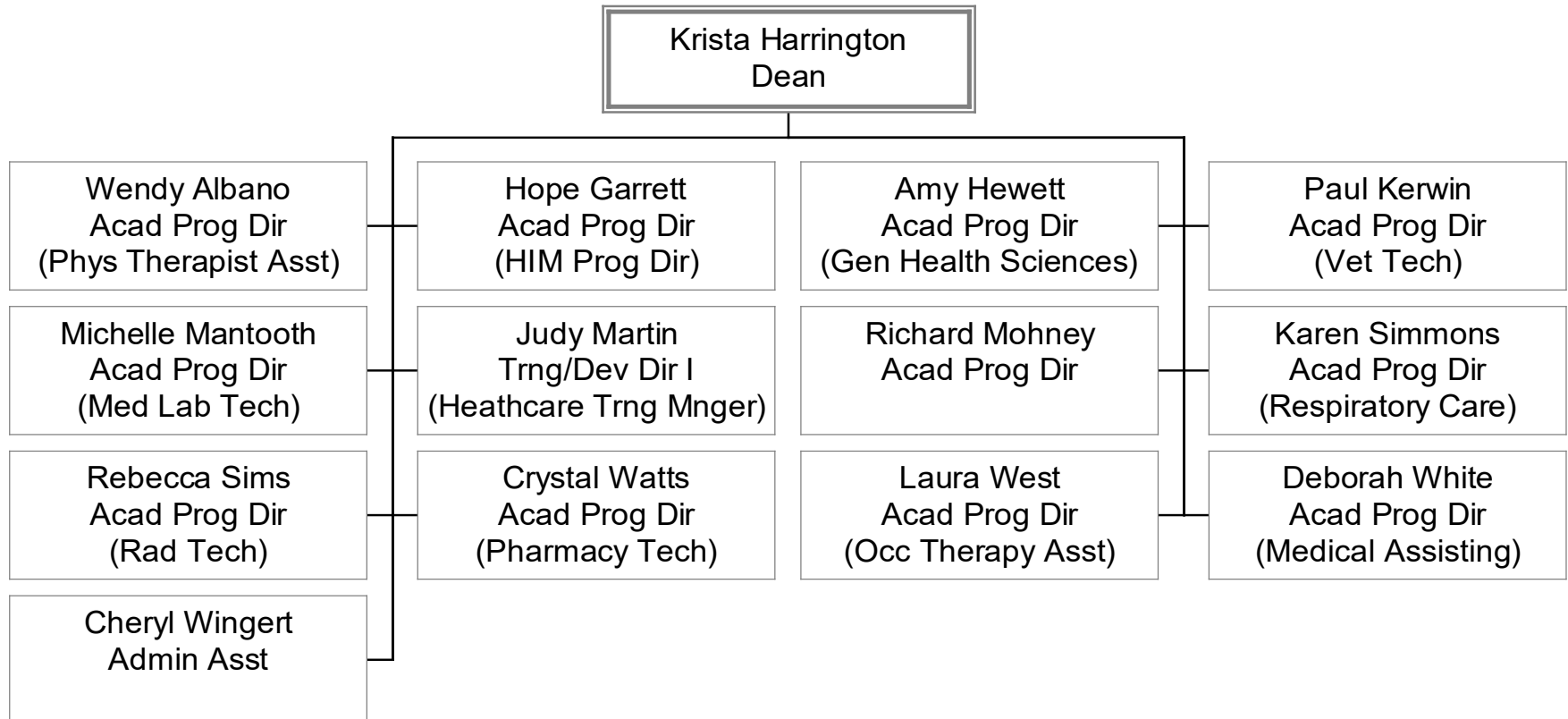
(a unit of the Division of Academic Affairs)



# Health Sciences

## (a unit of the Division of Academic Affairs)

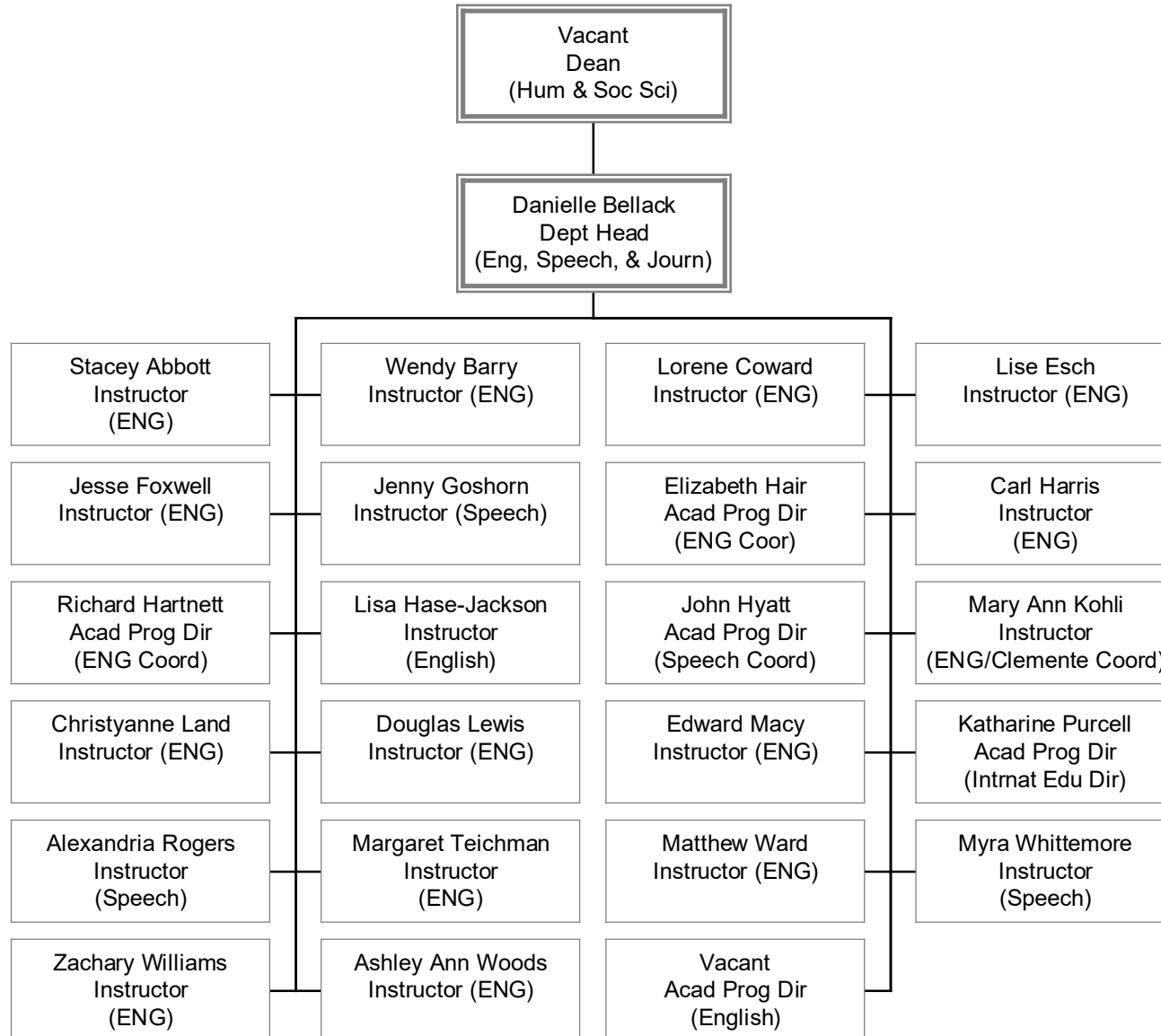




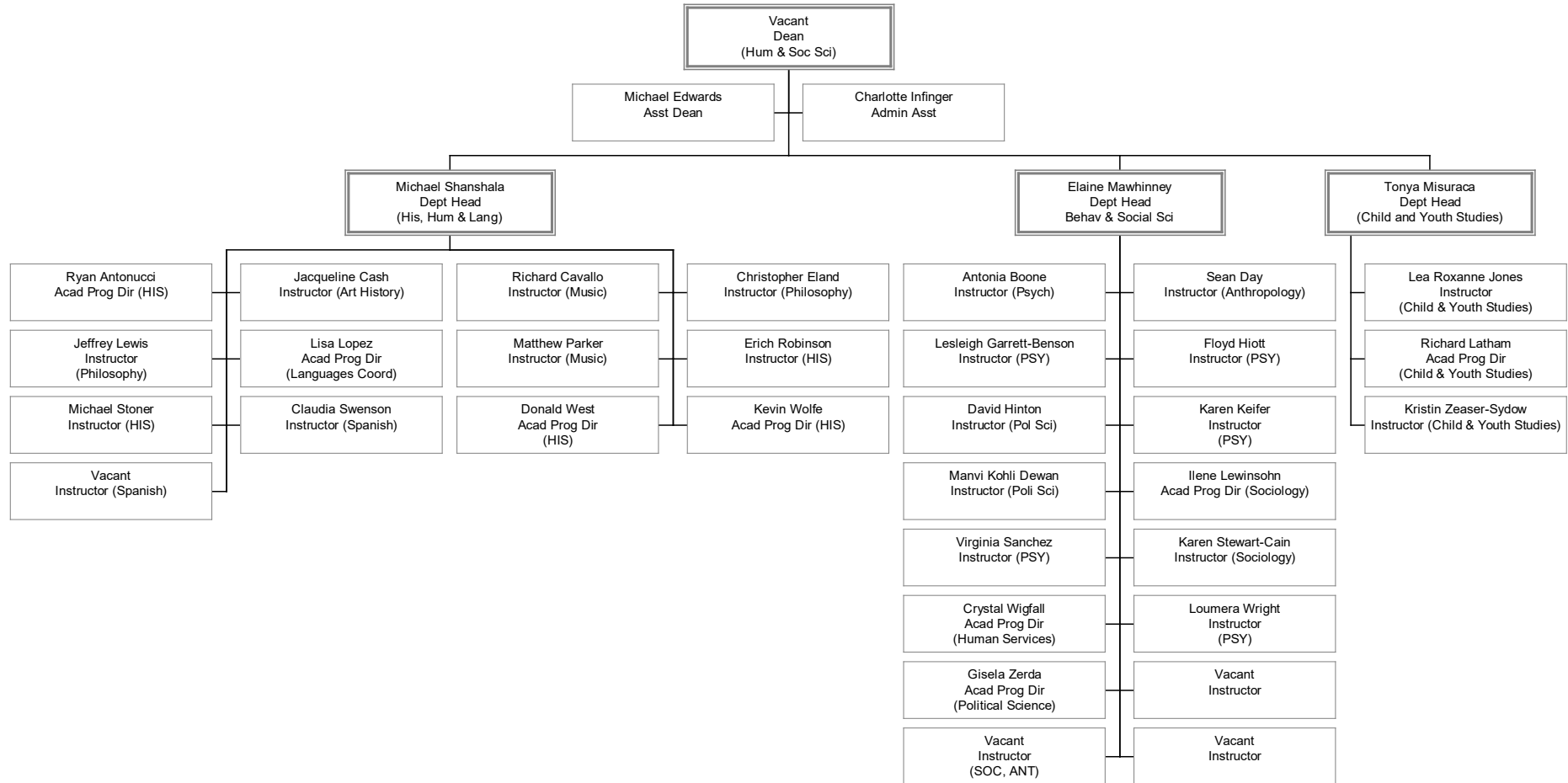


# Humanities and Social Sciences

## (a unit of the Division of Academic Affairs)

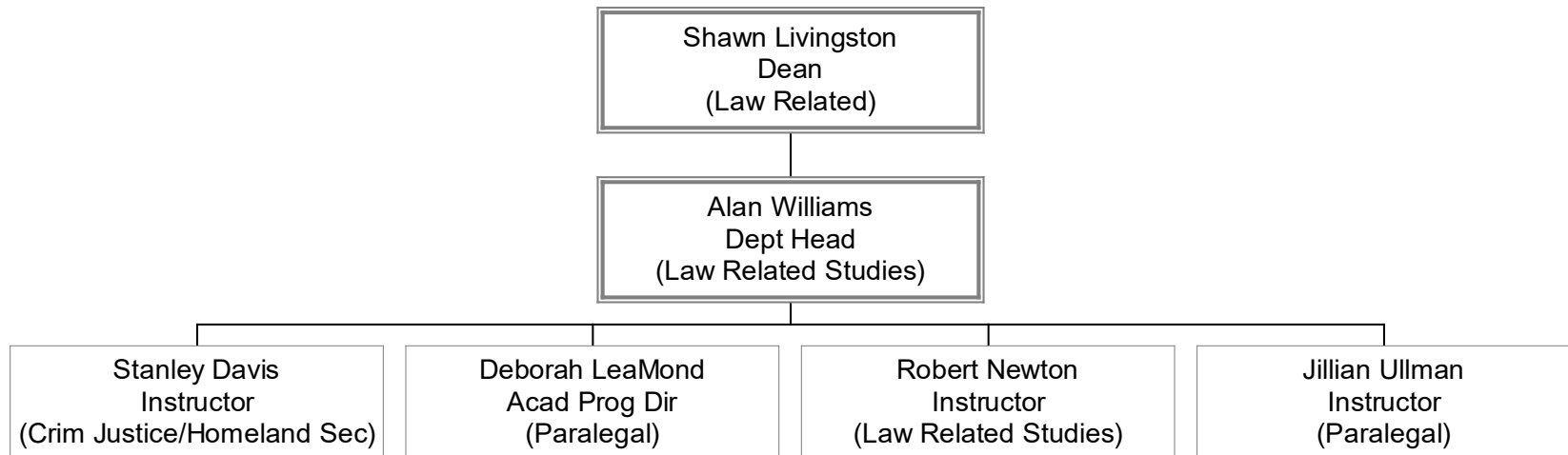


# Humanities and Social Sciences (a unit of the Division of Academic Affairs)



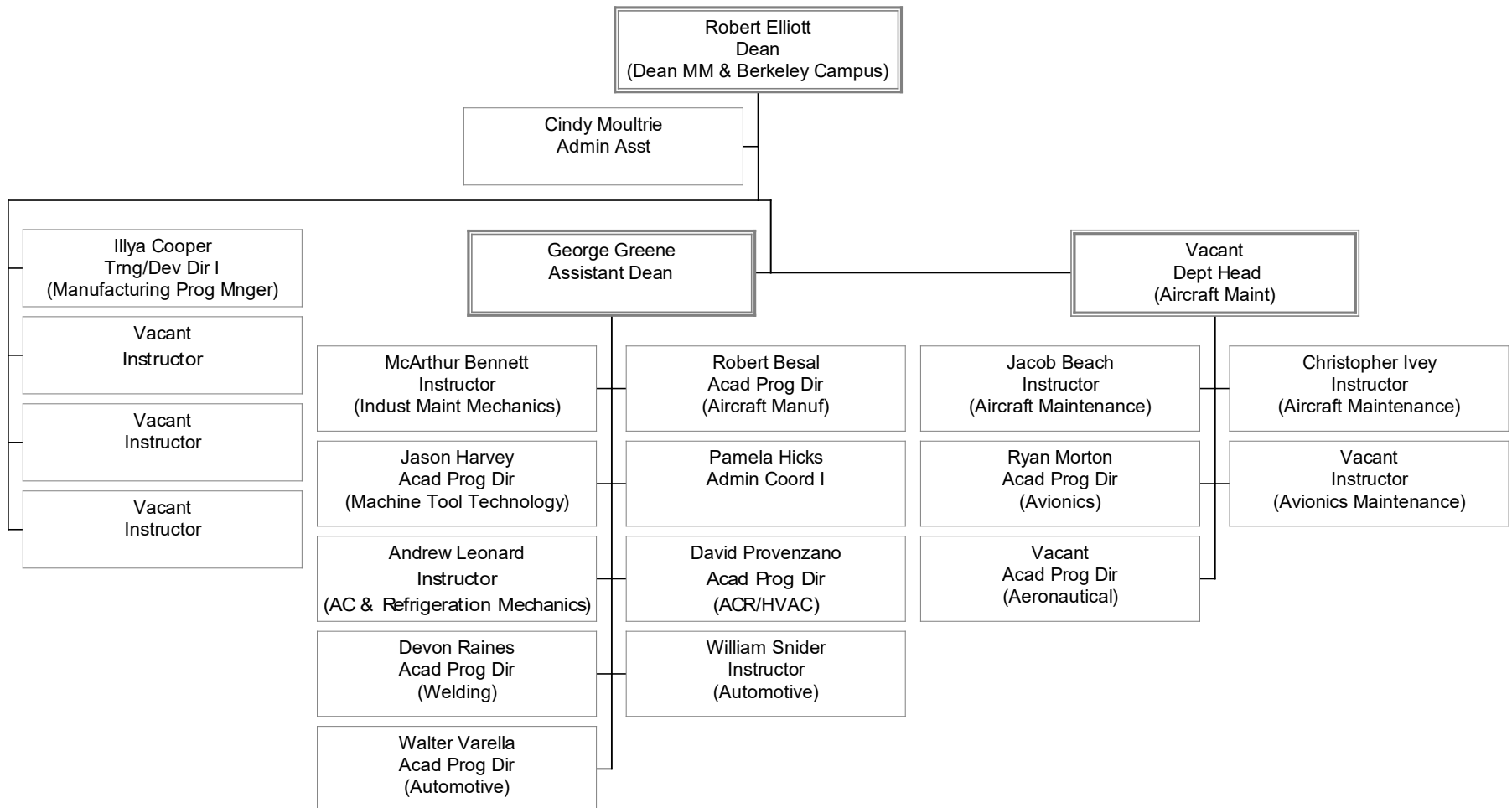
# **Law Related Studies**

## **(a unit of the Division of Academic Affairs)**



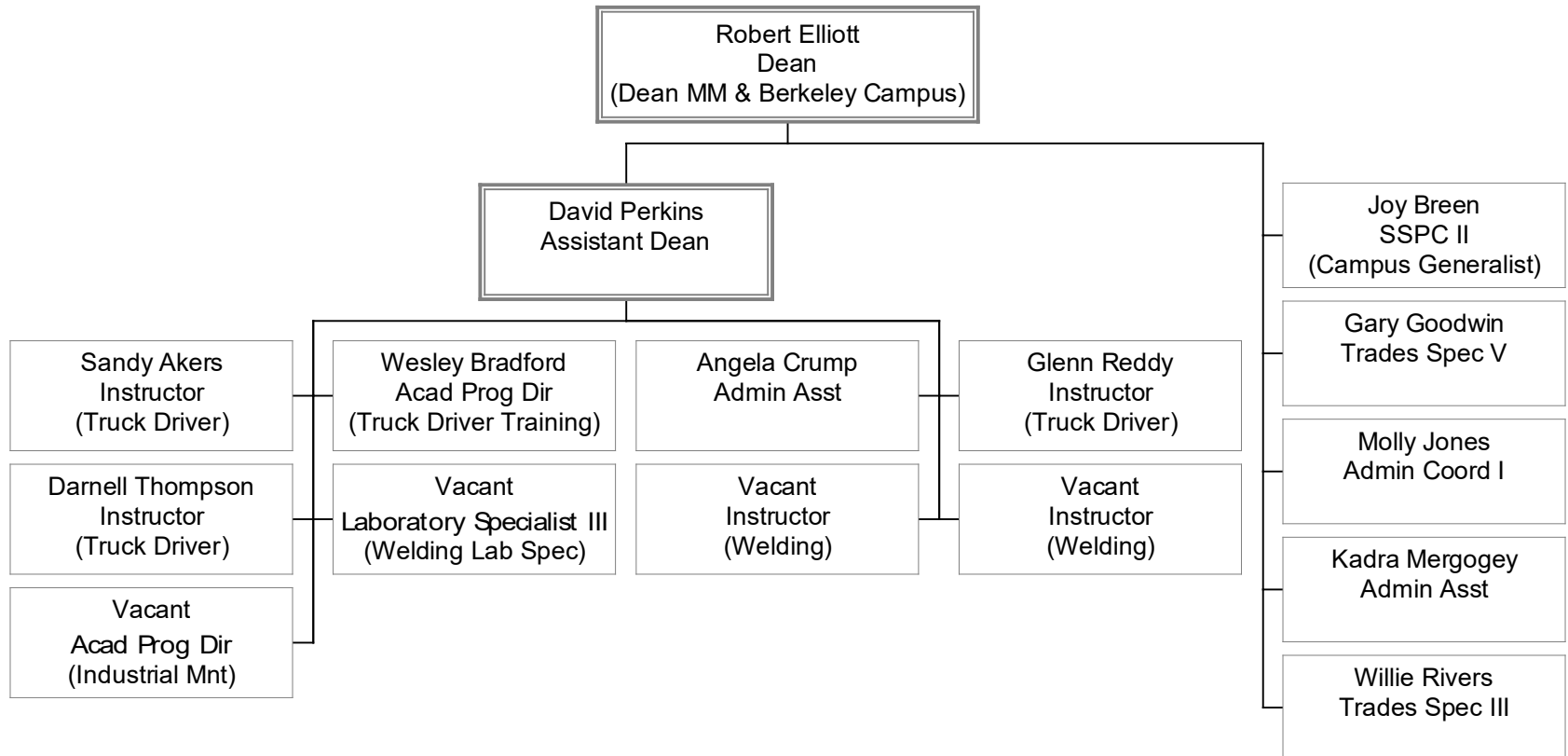
# Manufacturing and Maintenance

## (a unit of the Division of Academic Affairs)



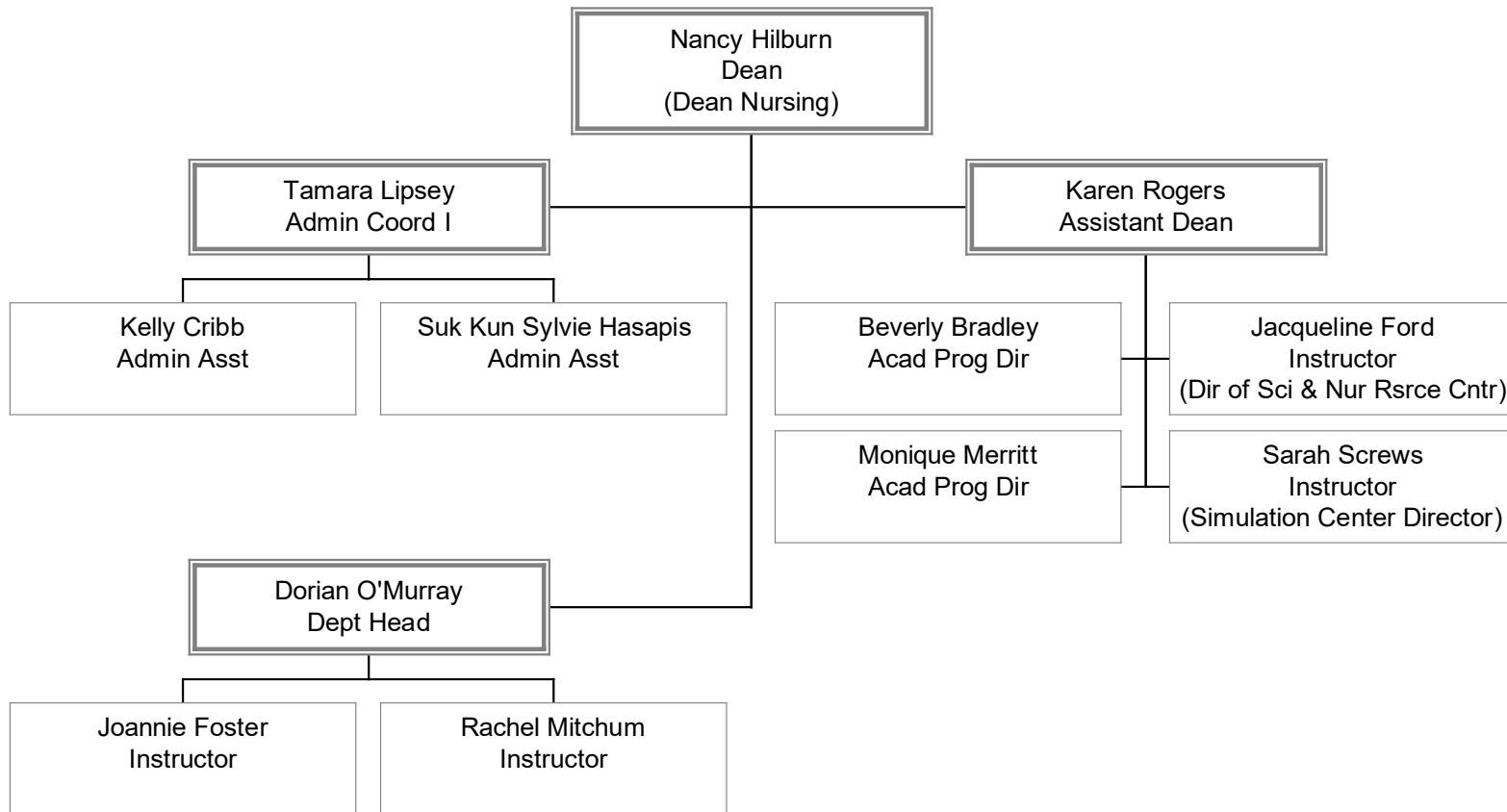
# Manufacturing and Maintenance

(a unit of the Division of Academic Affairs)



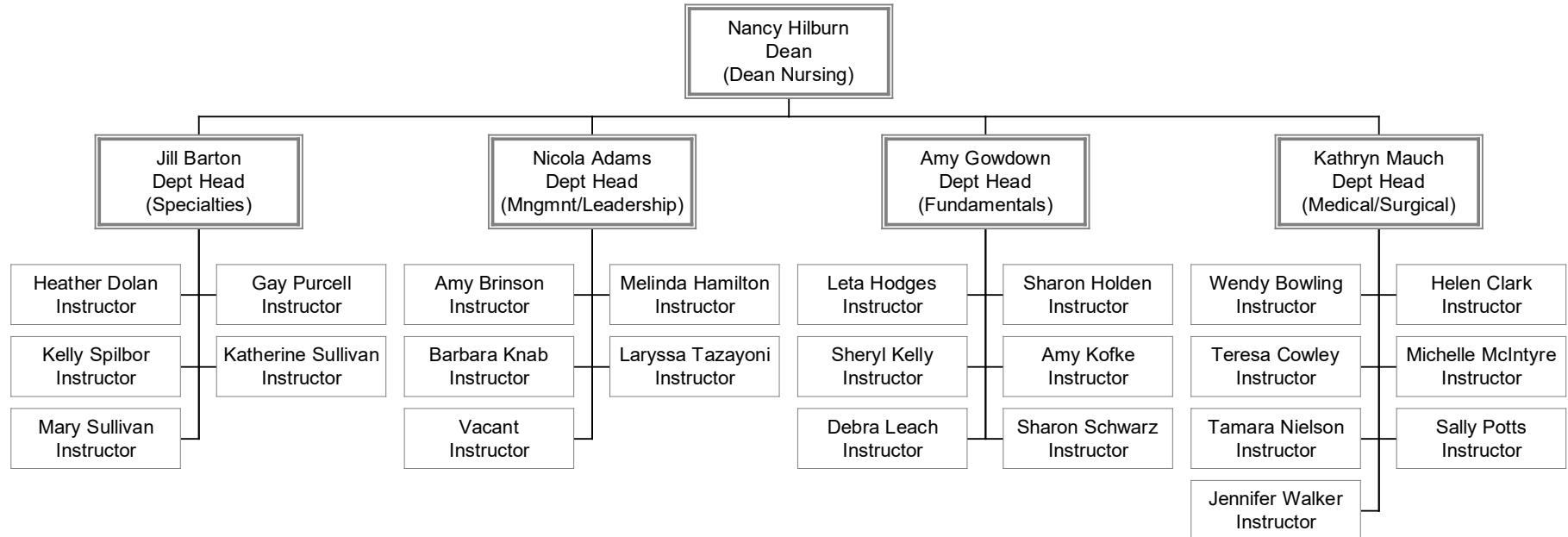
# Nursing

## (a unit of the Division of Academic Affairs)

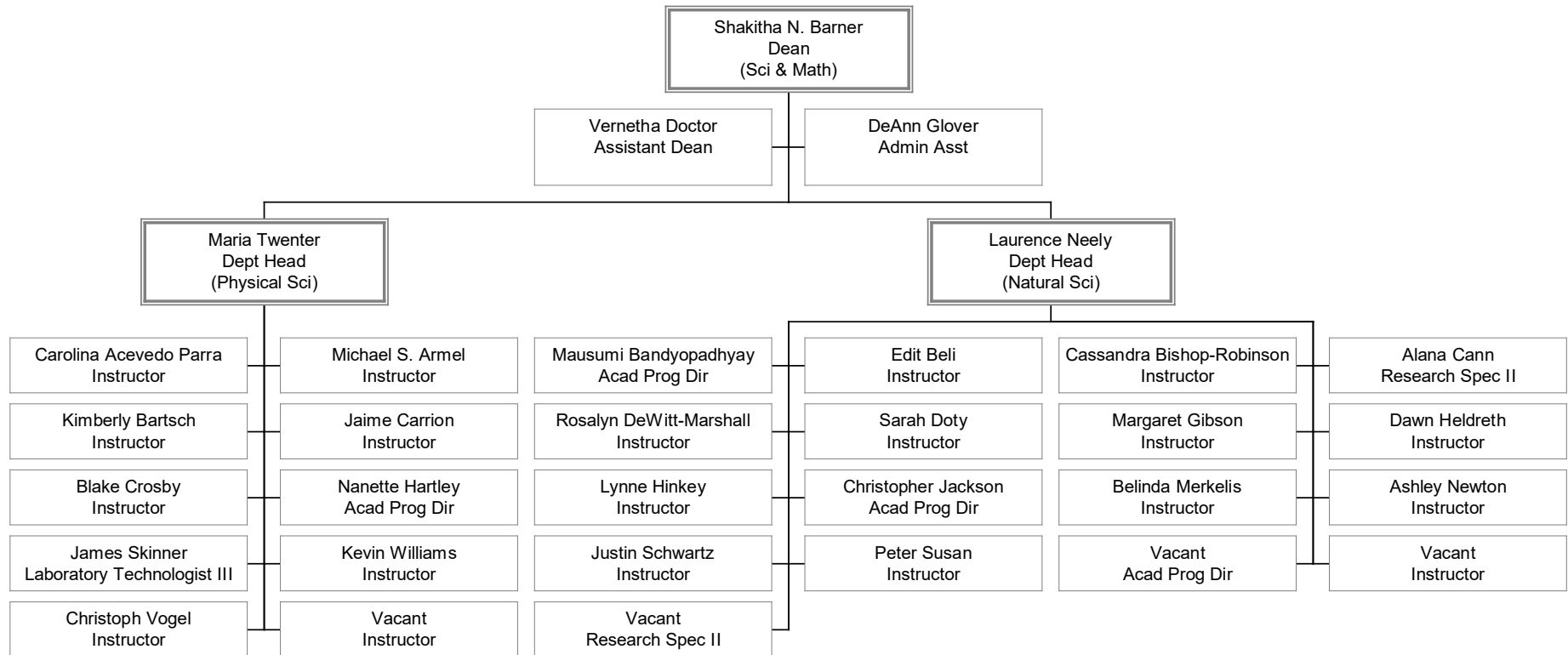


# Nursing

(a unit of the Division of Academic Affairs)

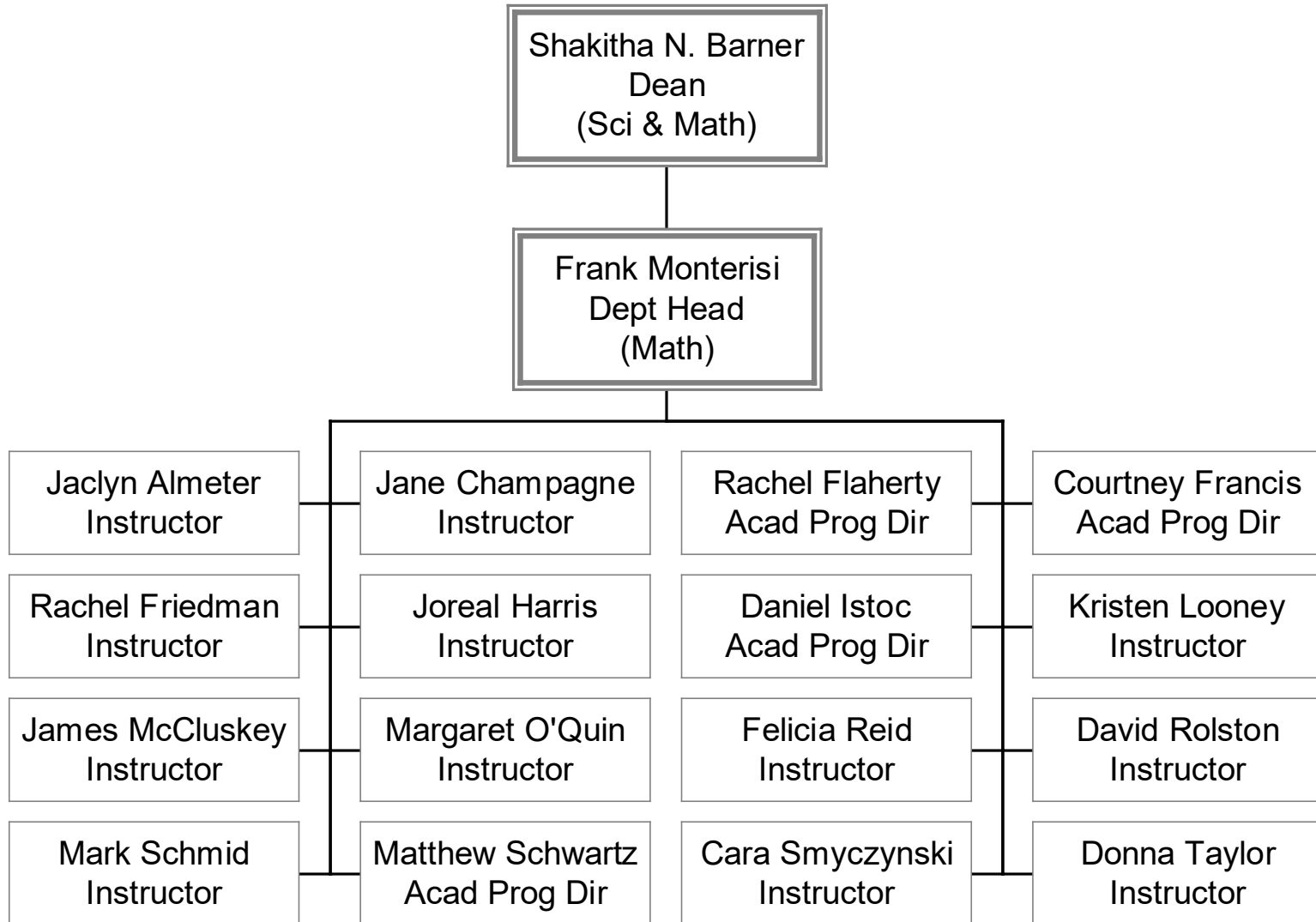


# Science and Mathematics (a unit of the Division of Academic Affairs)

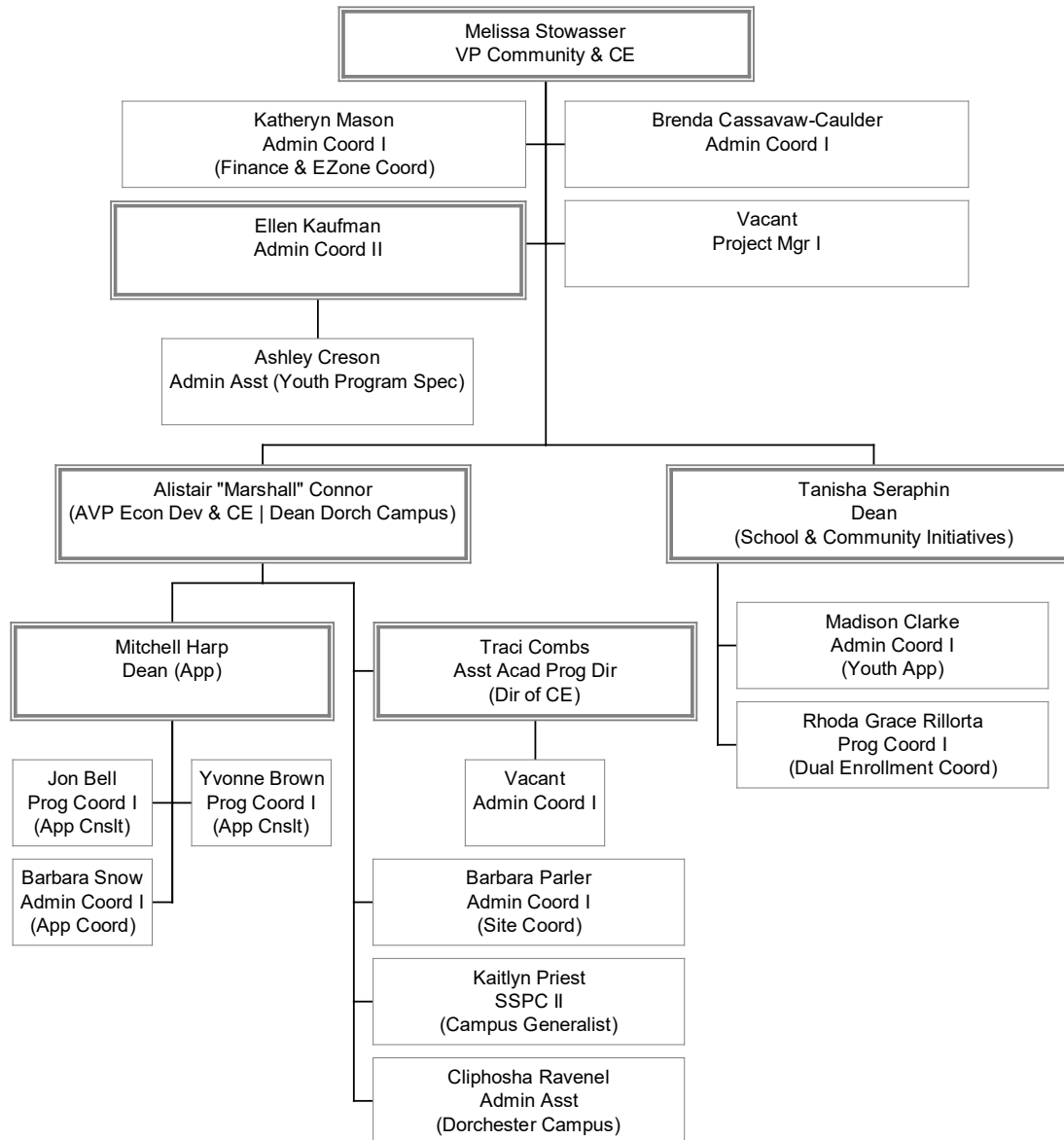




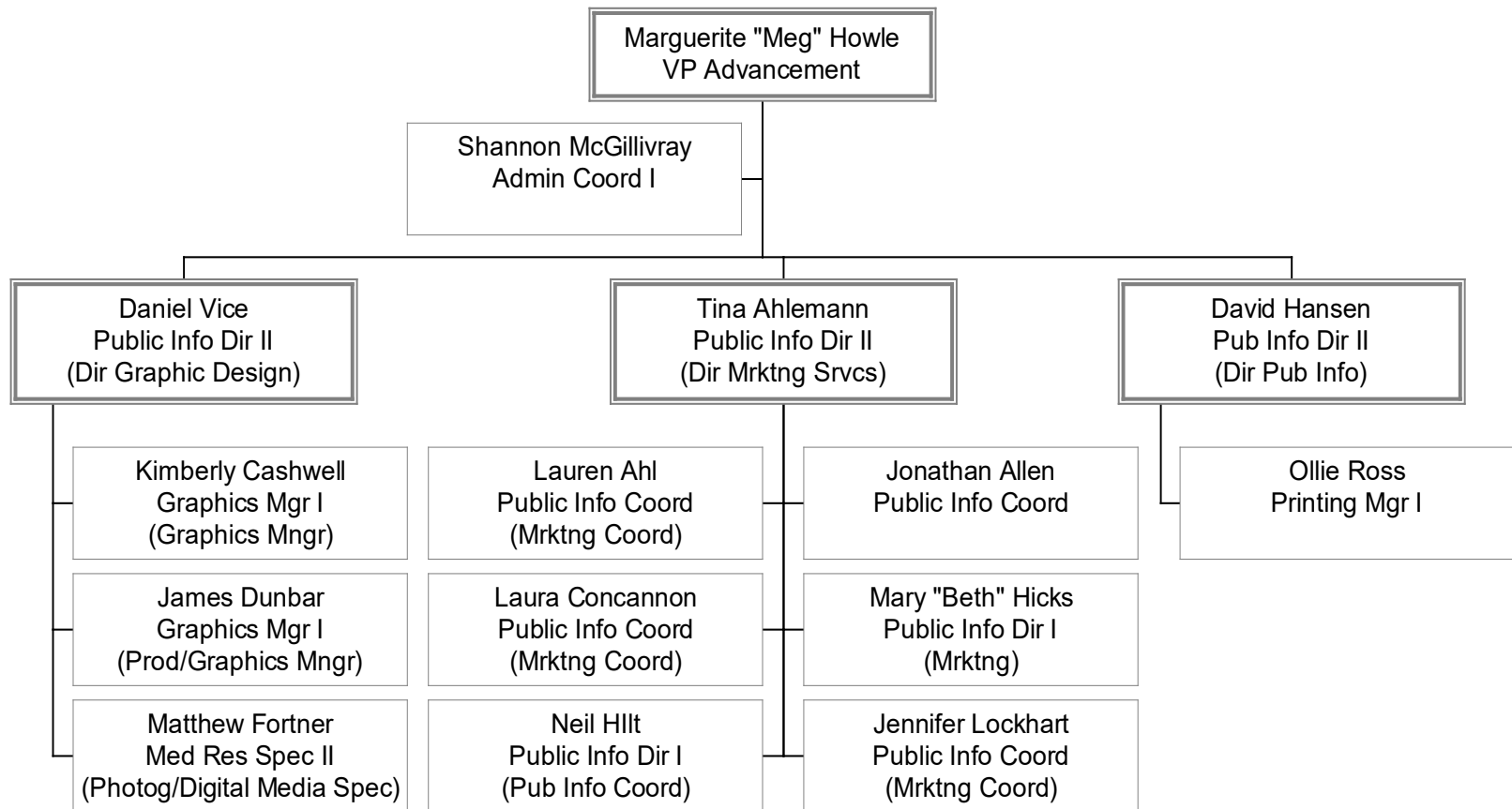
# Science and Mathematics (a unit of the Division of Academic Affairs)



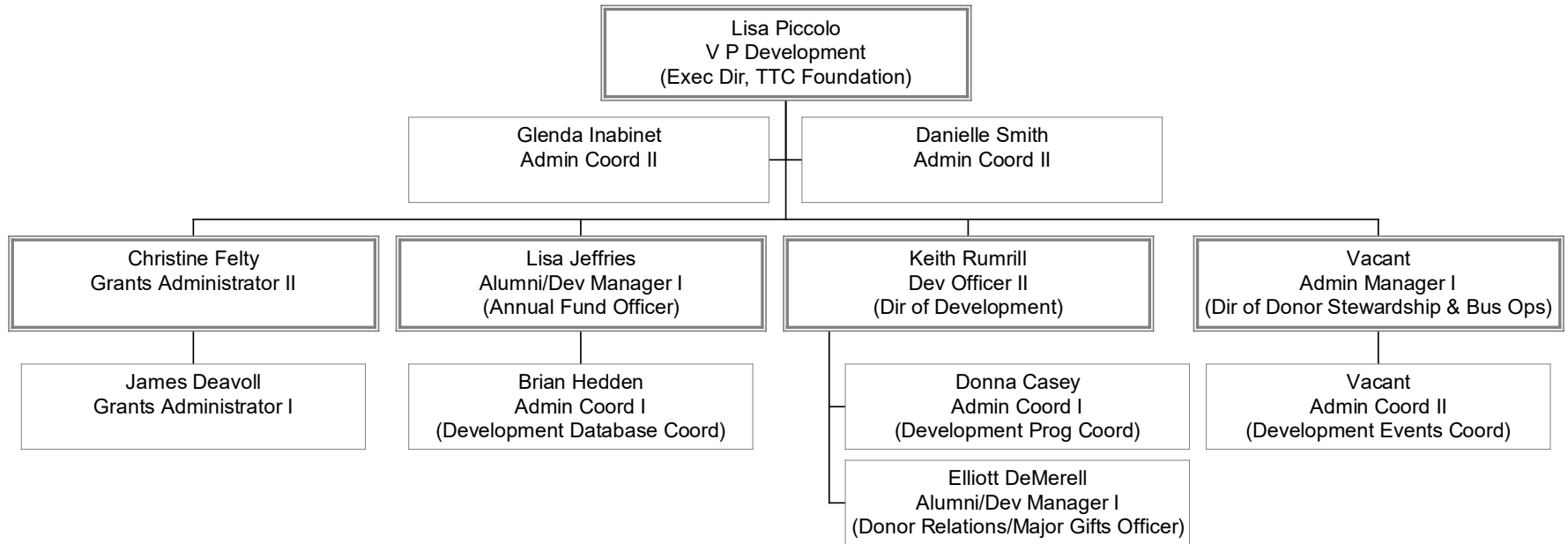
# Community and Continuing Education



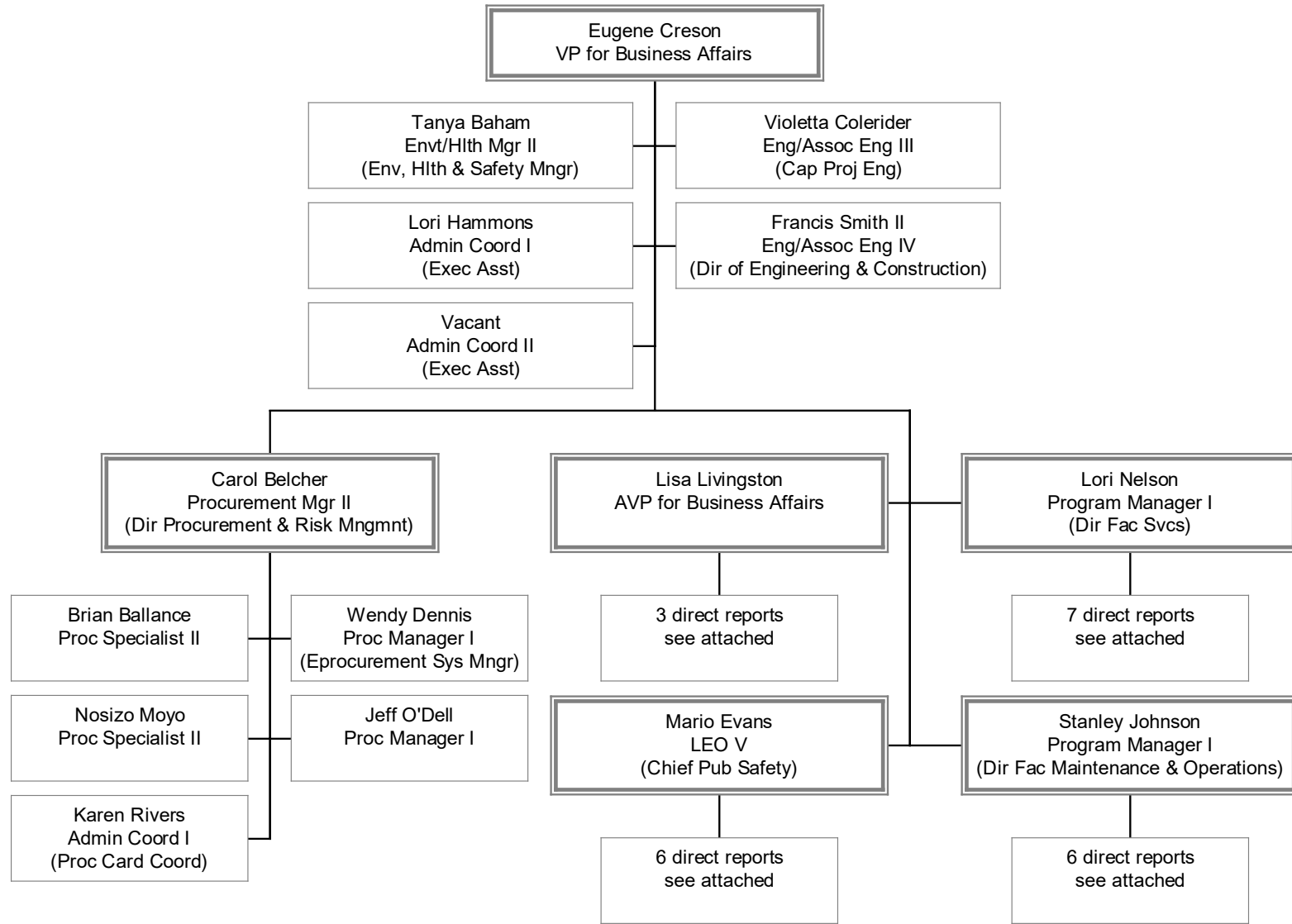
# Advancement



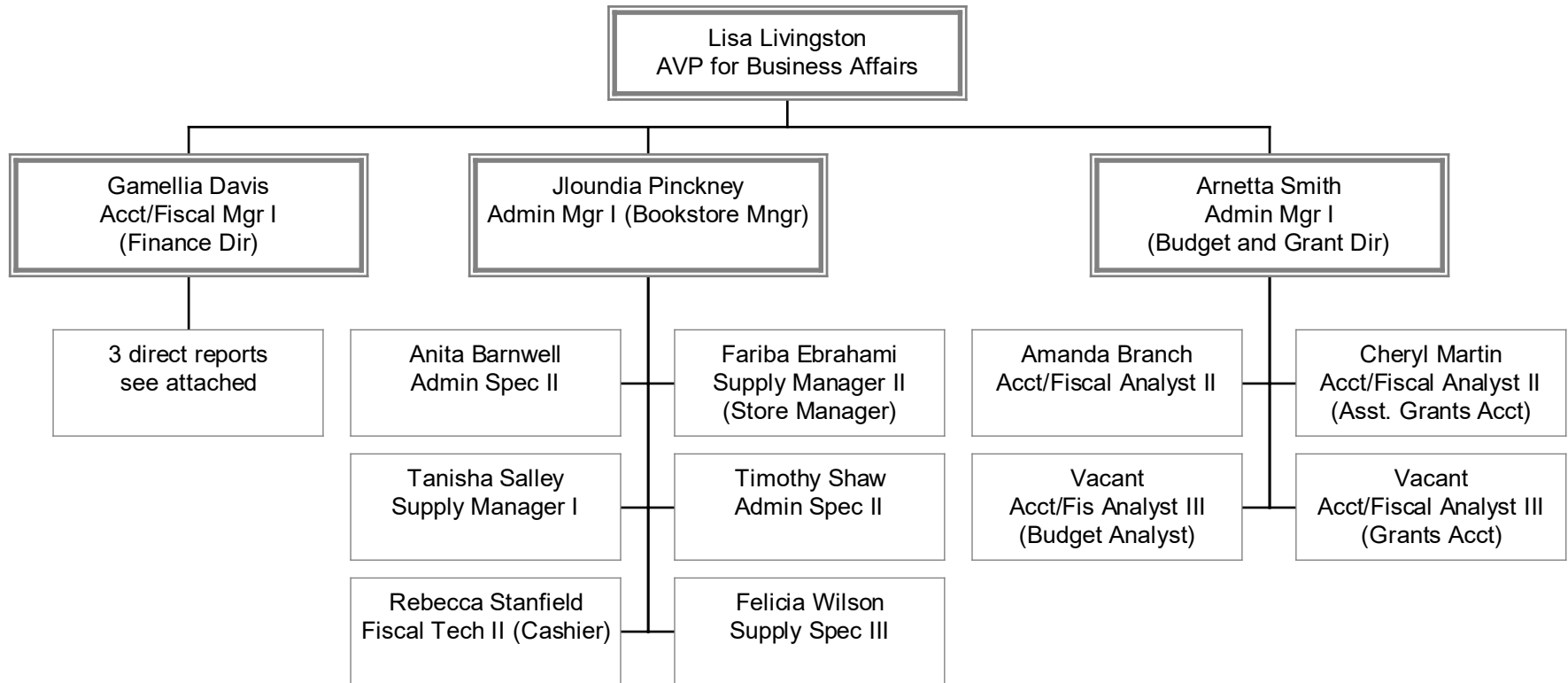
# Development



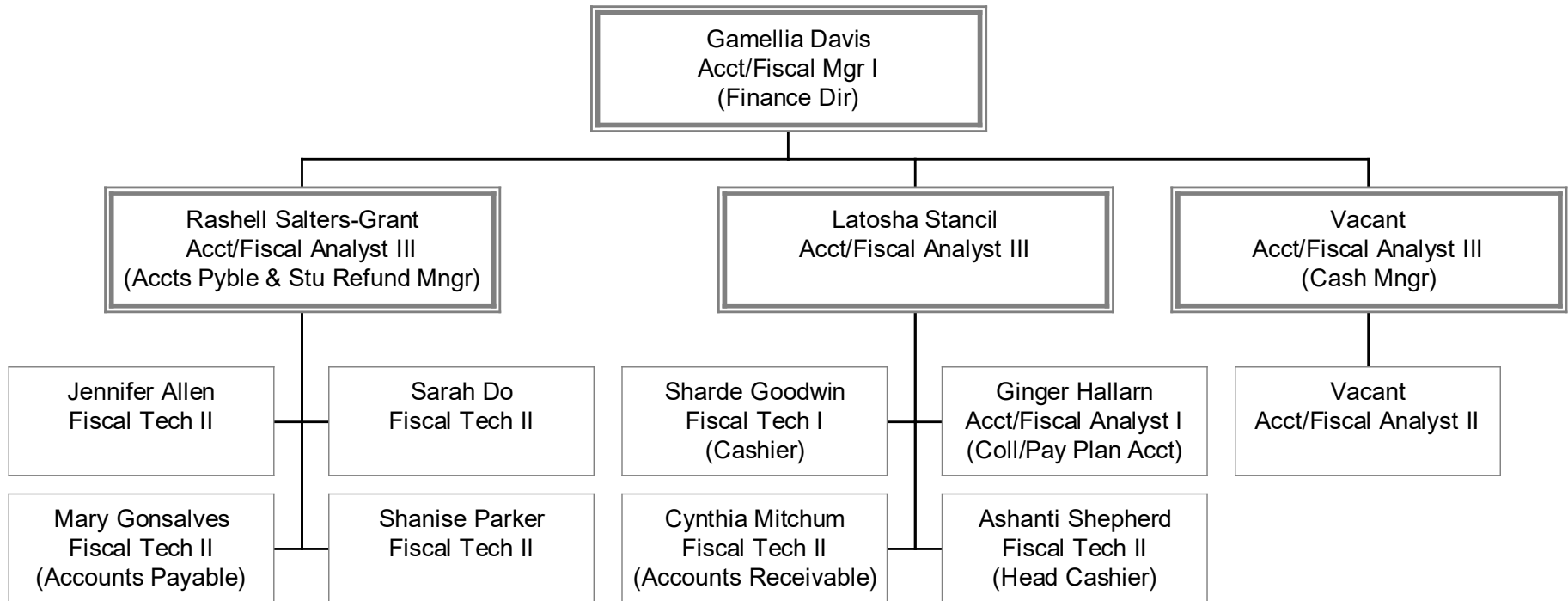
# Division of Business Affairs



# Division of Business Affairs

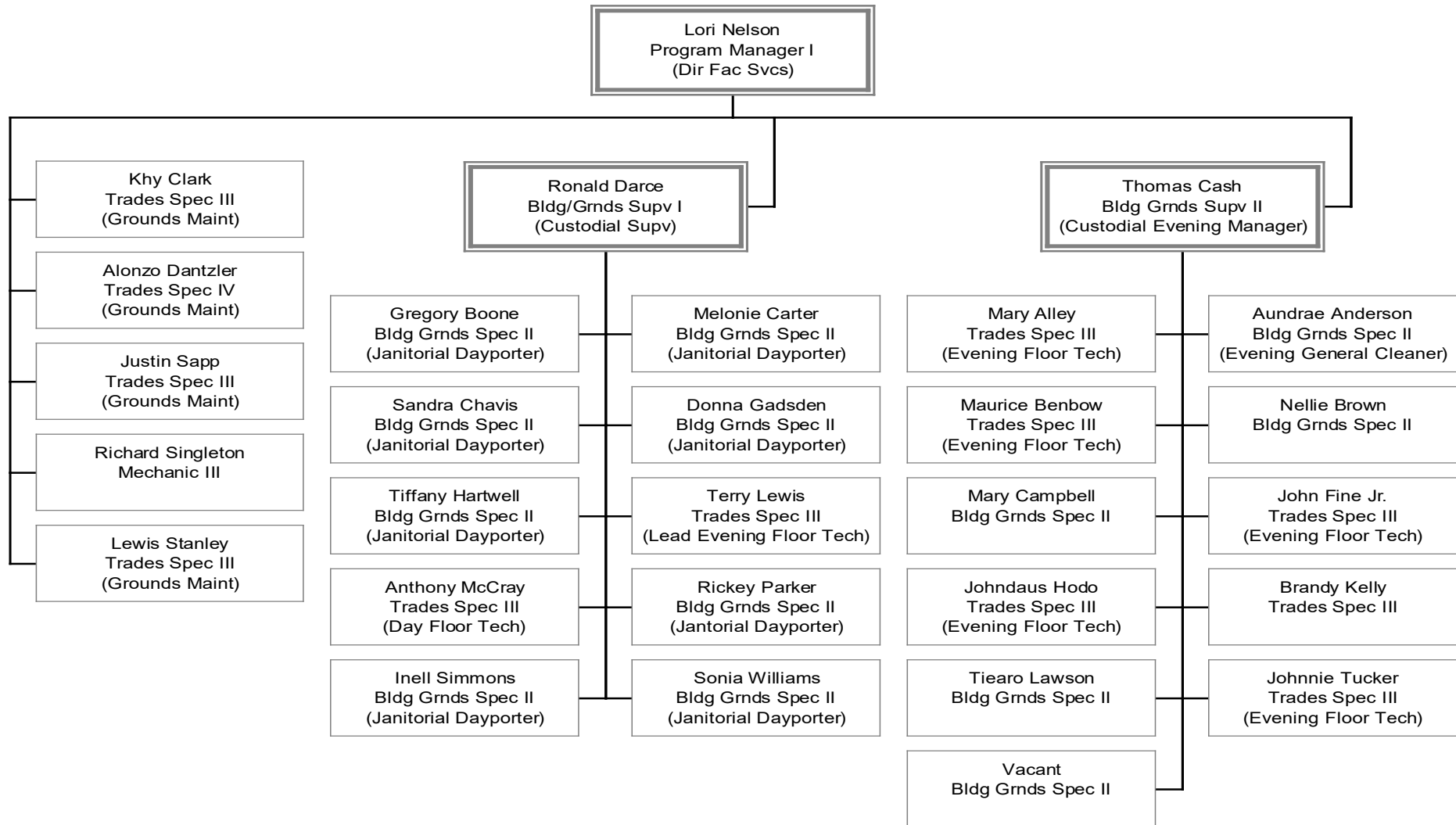


# Division of Business Affairs



# Facility Services

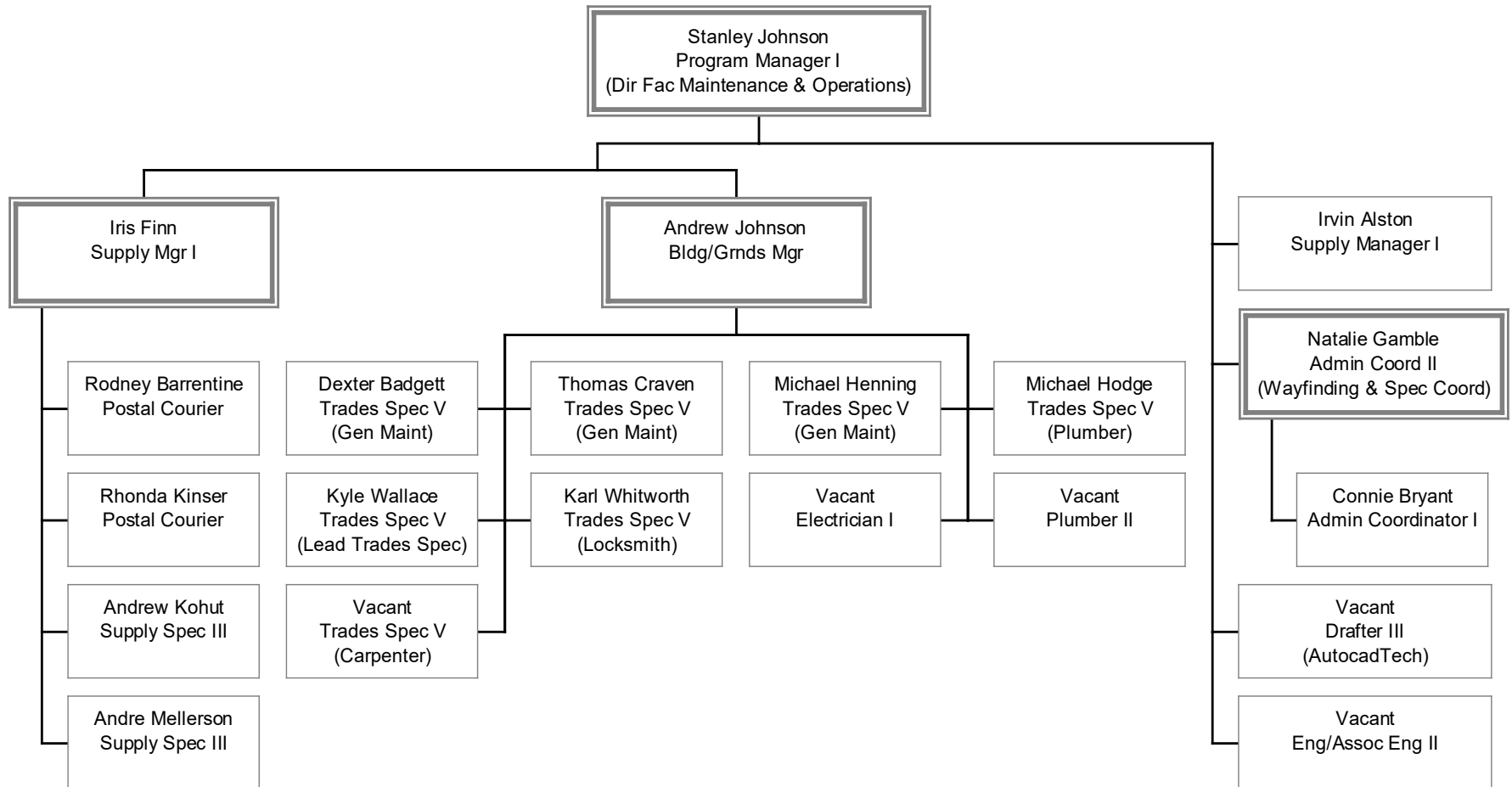
## (a unit of the Division of Business Affairs)





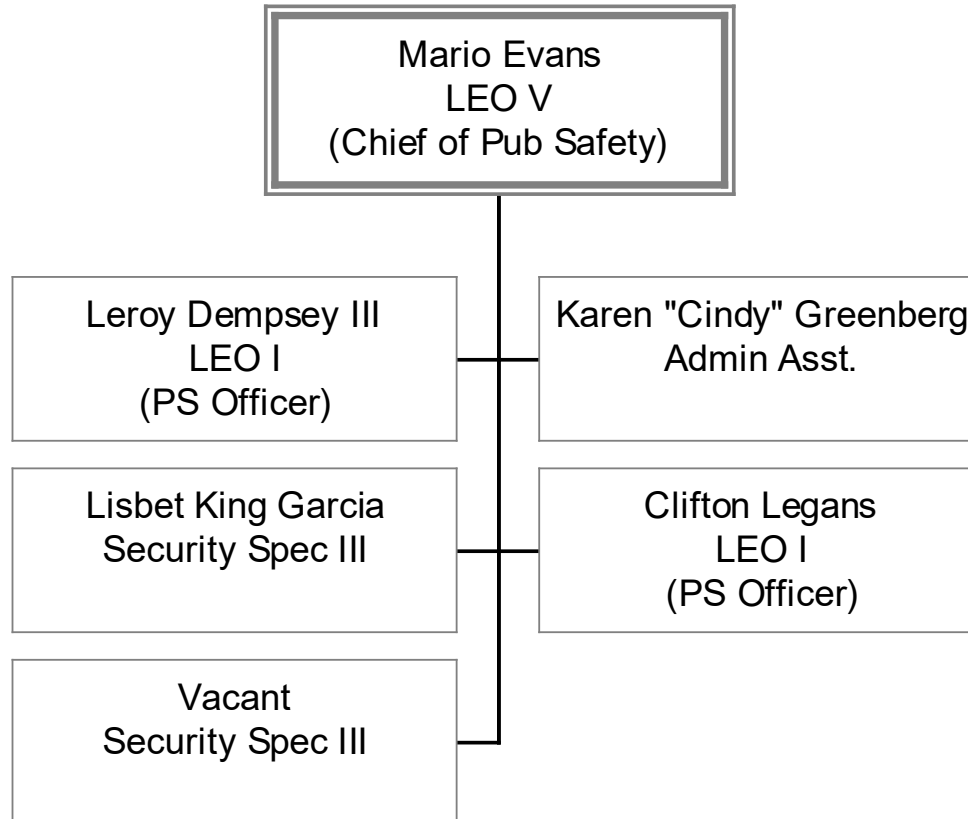
# Facilities Management

## (a unit of the Division of Business Affairs)



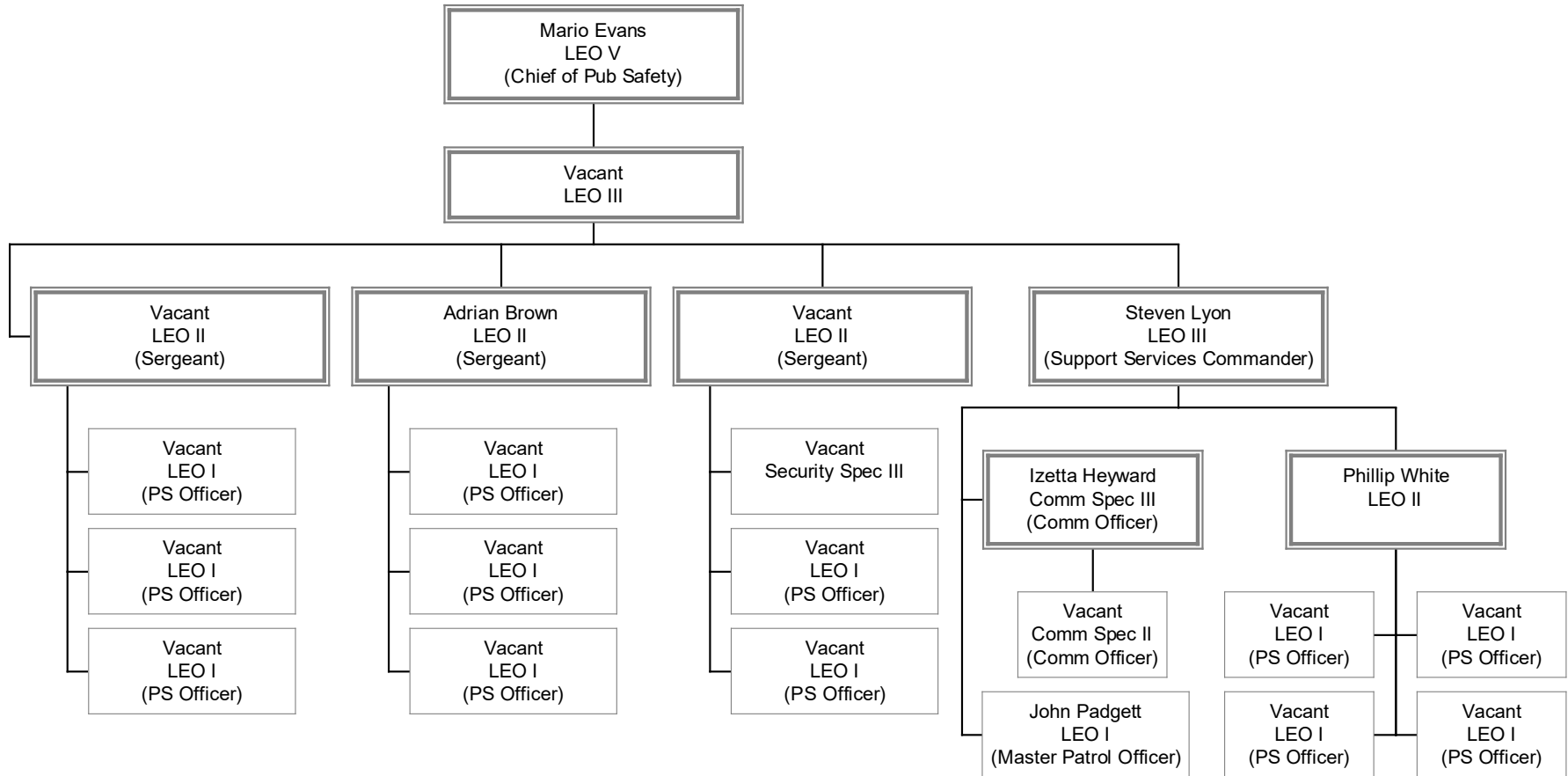
# Public Safety

(a unit of the Division of Business Affairs)

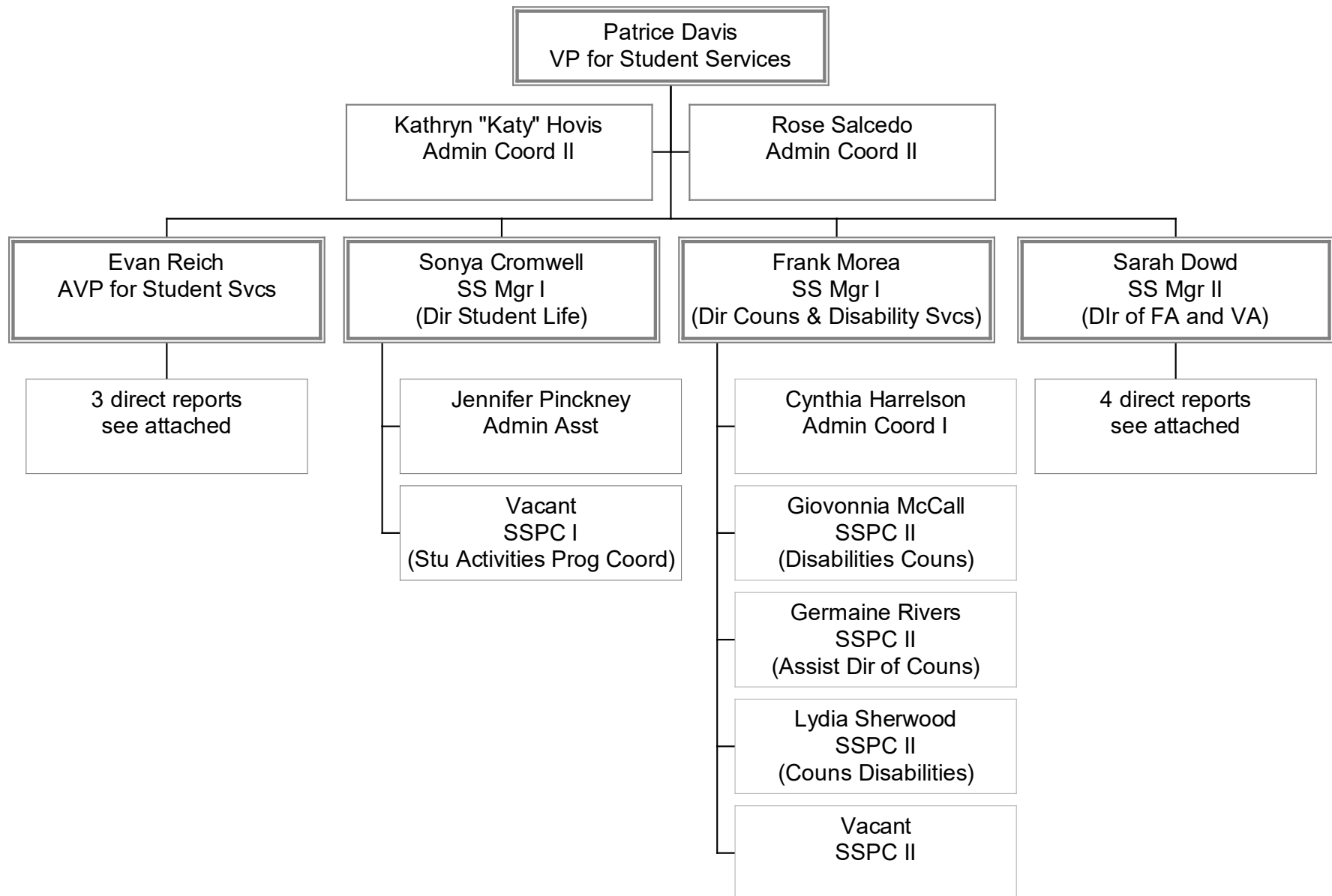


# Public Safety

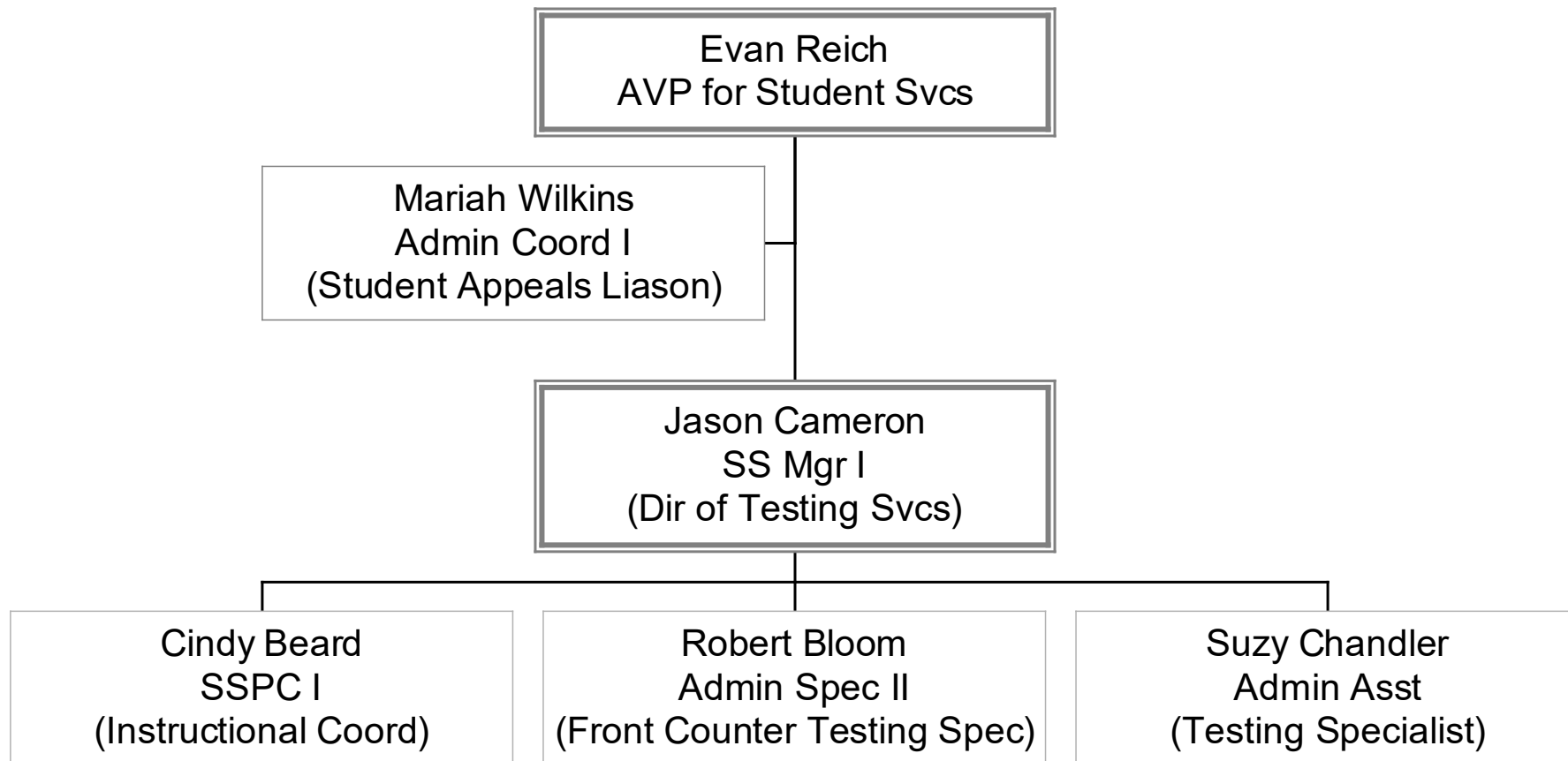
## (a unit of the Division of Business Affairs)



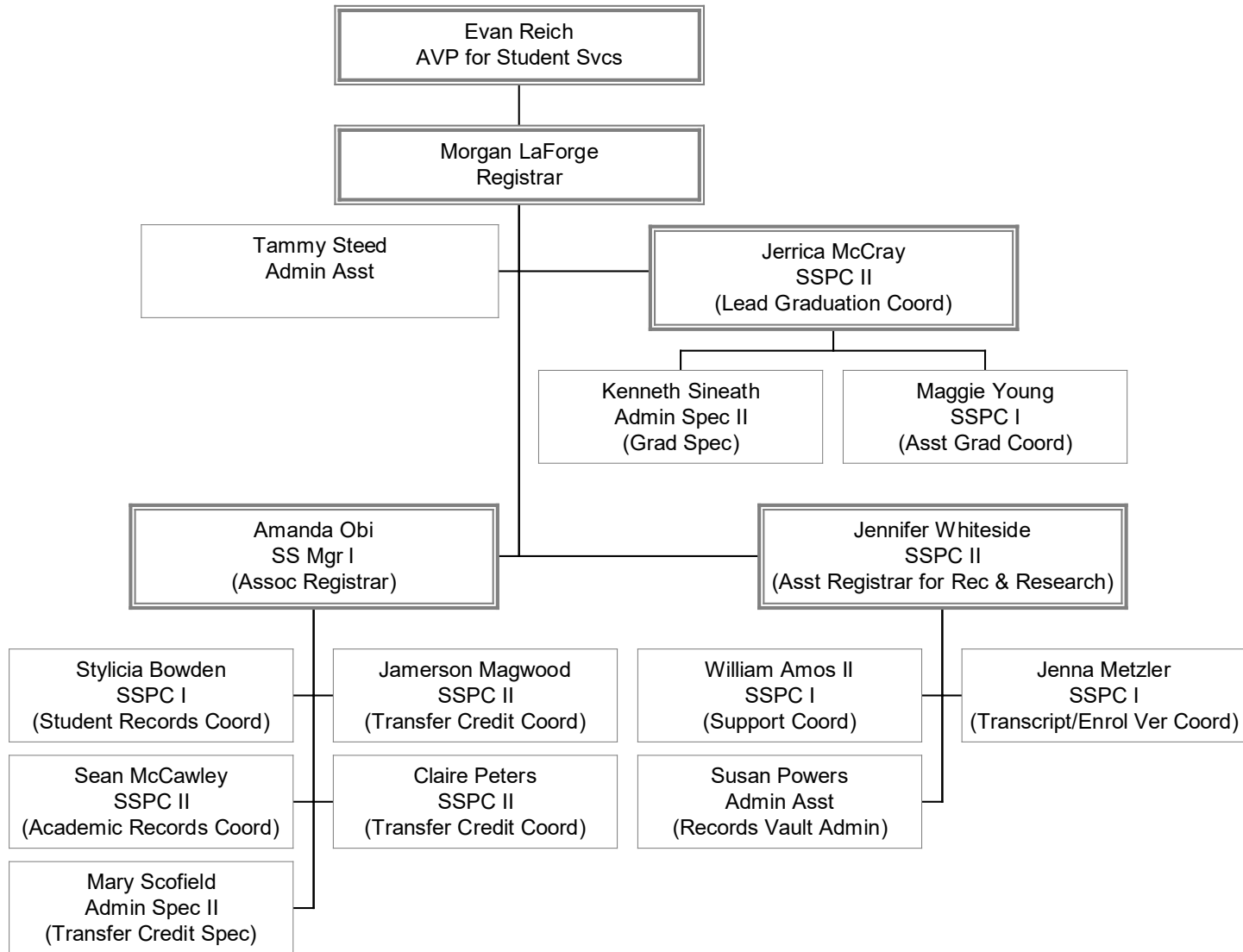
# Student Services Division



# Student Services Division

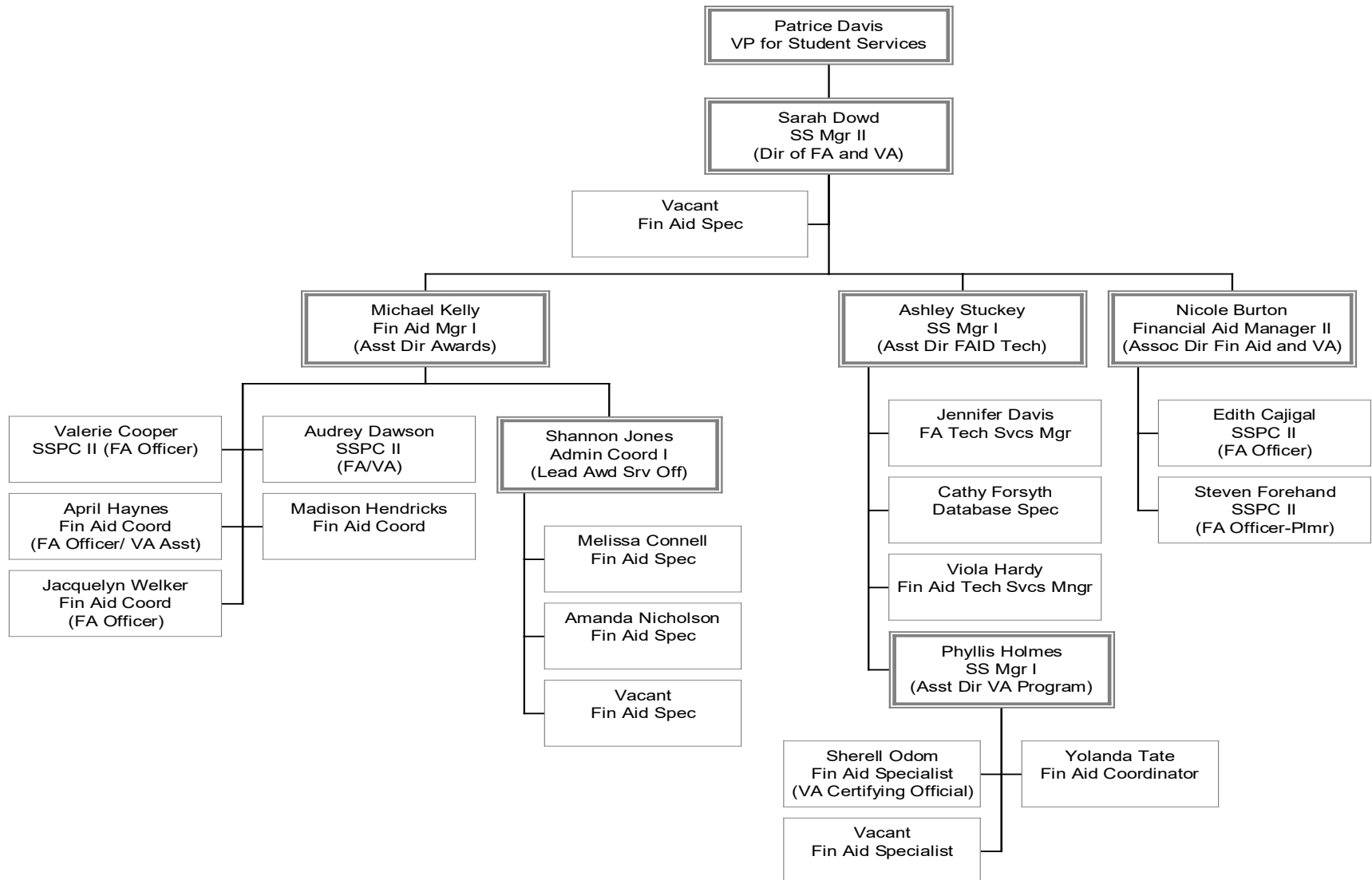


# Registrar's Office (a unit of Student Services)

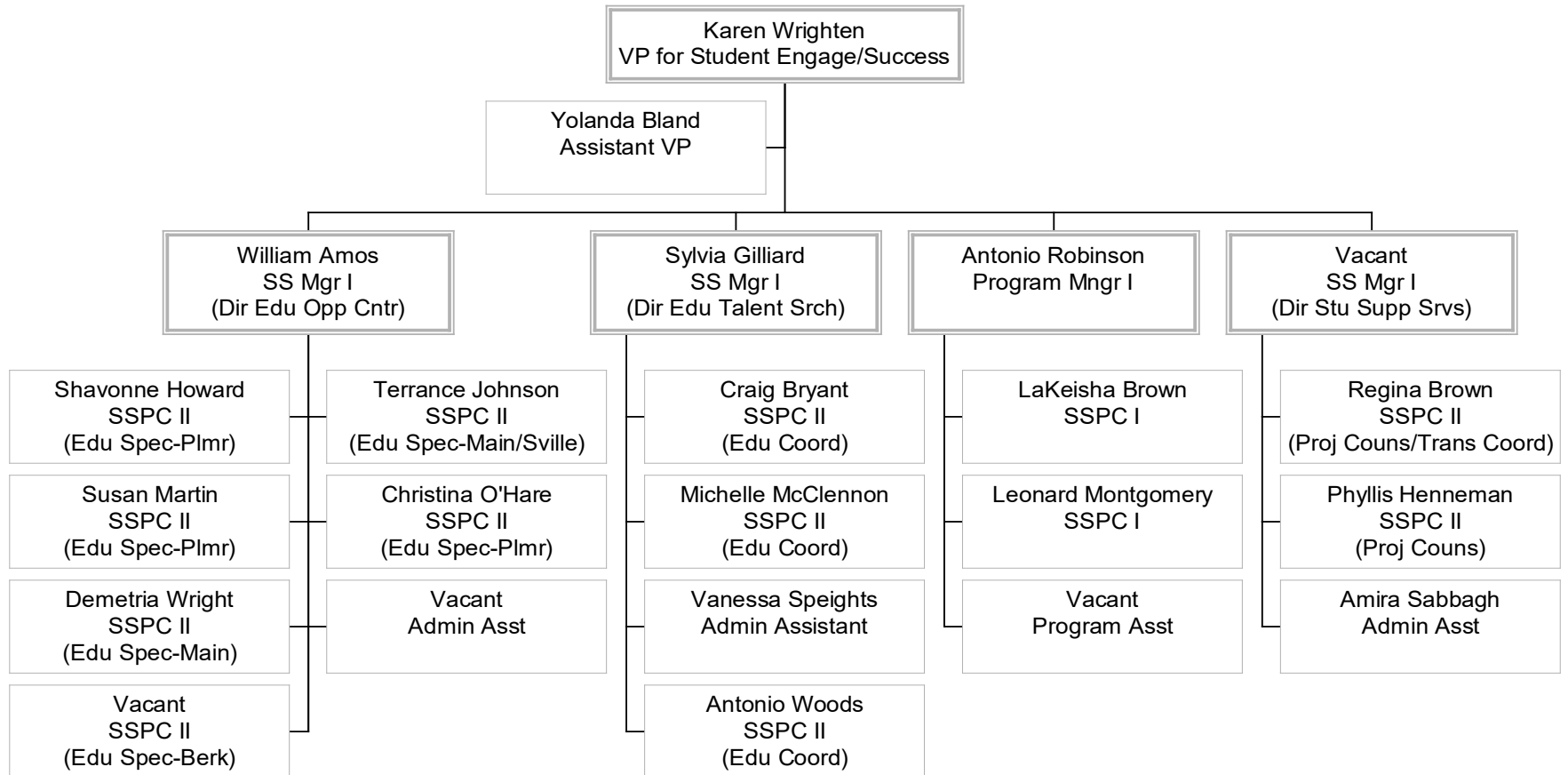


# Enrollment Management

## (a unit of Student Services)



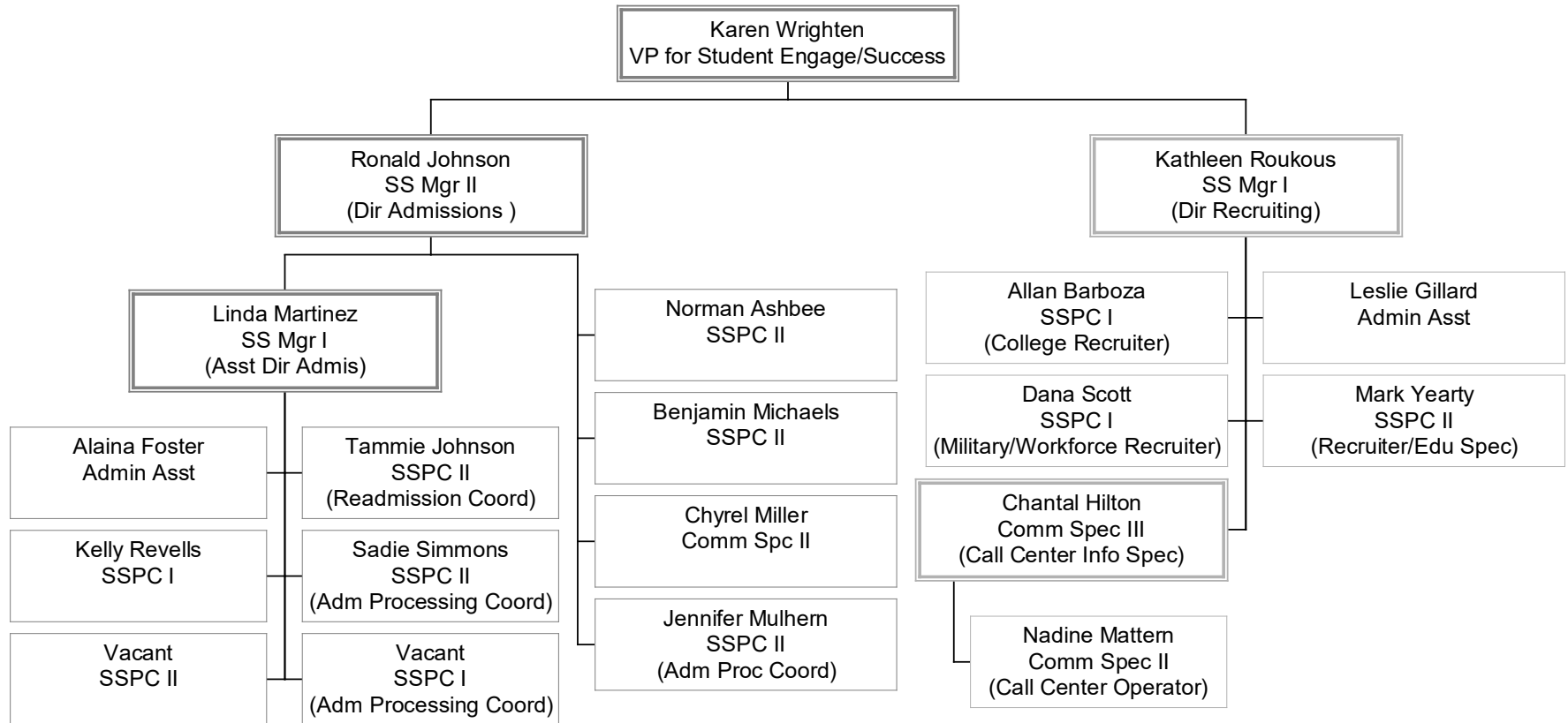
# Student Engagement & Success

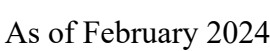




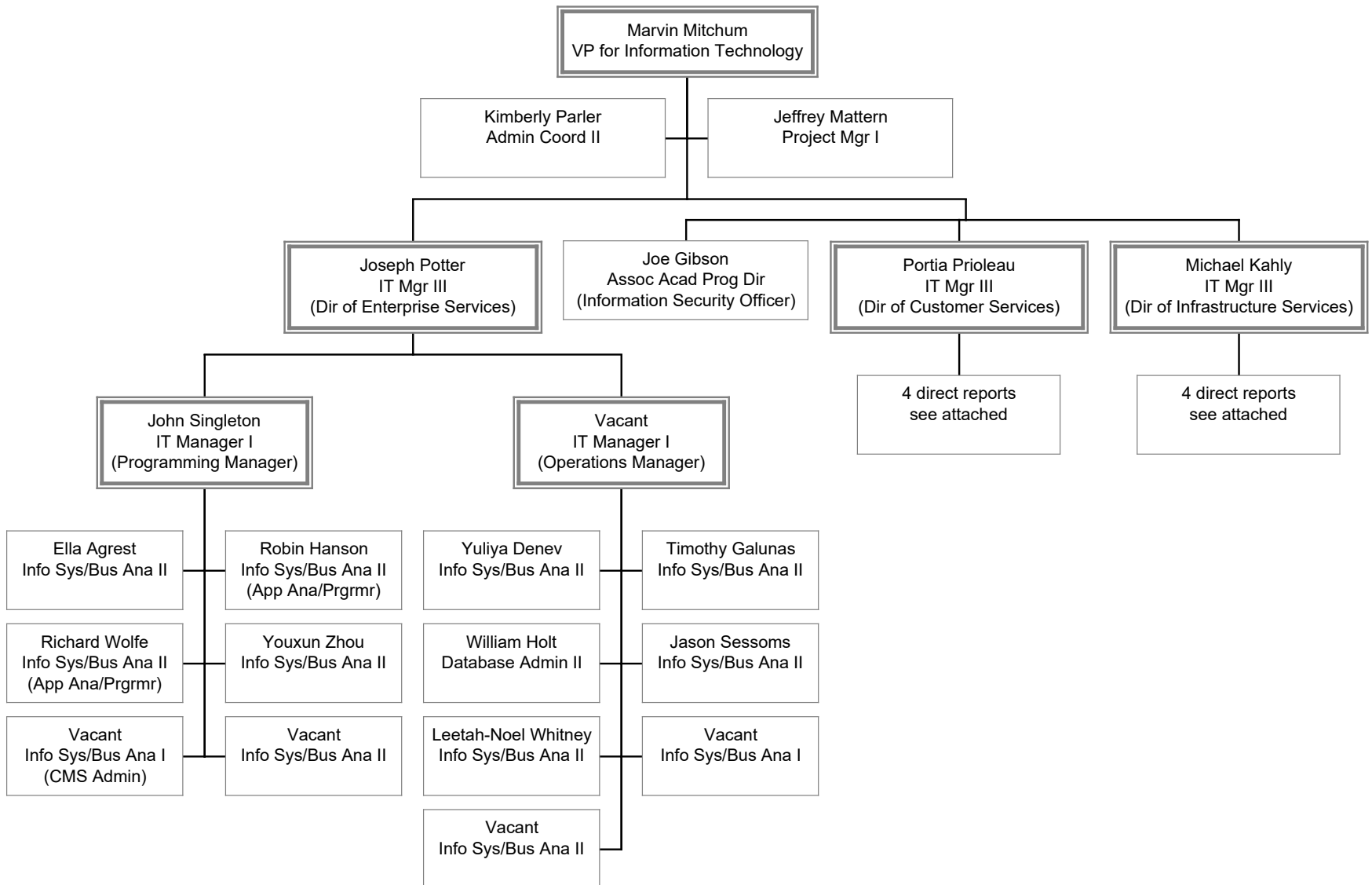
# Admissions and Recruiting

## (units of Student Engagement & Success)



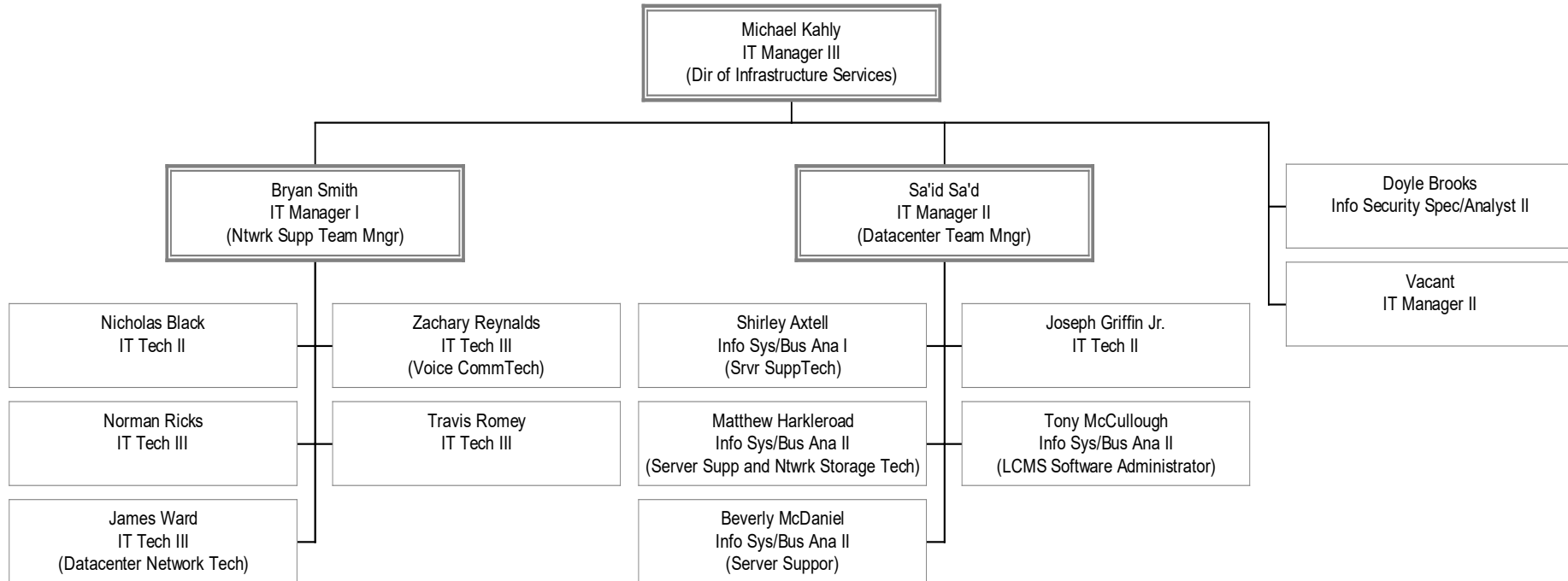


# Information Technology



# Information Technology

## IT Services



# Information Technology

## IT Services

