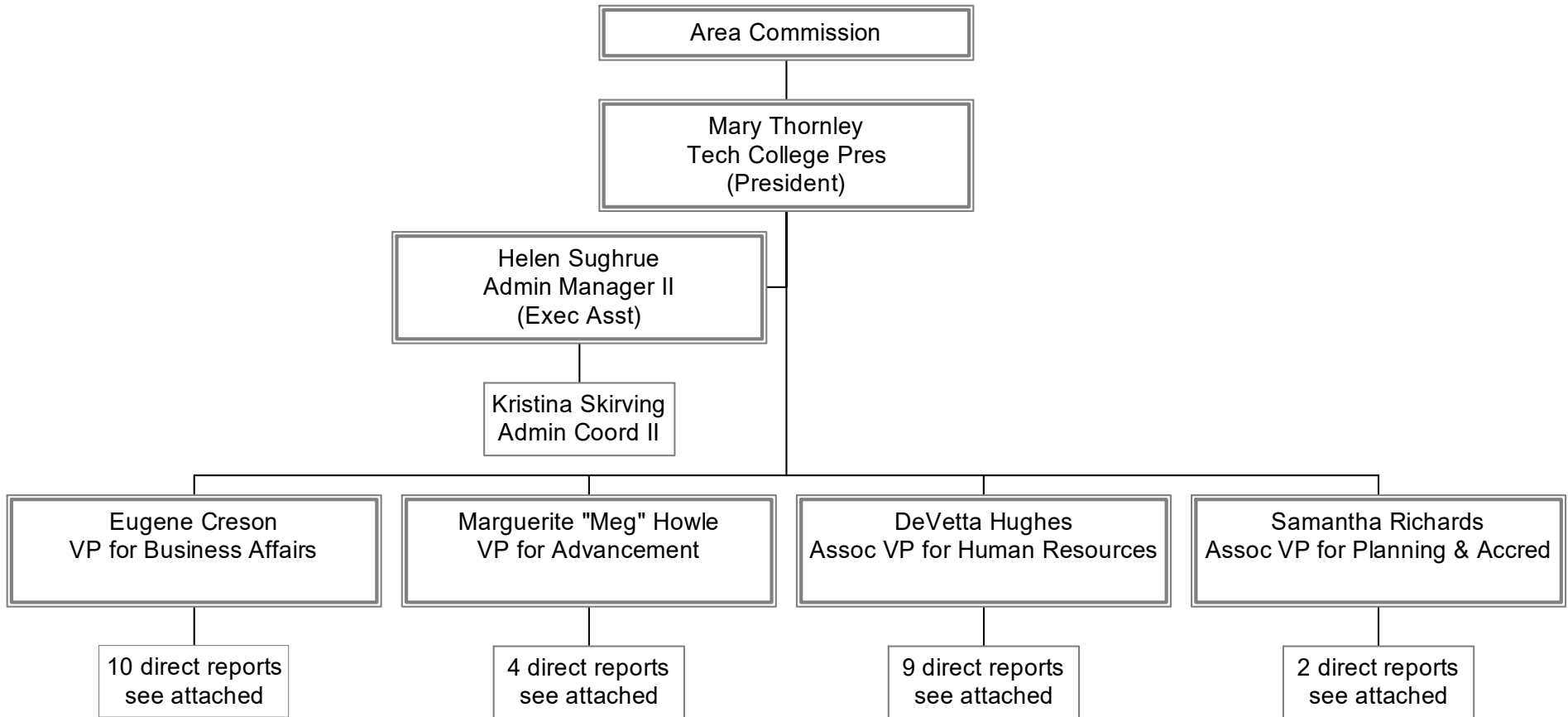


Organizational Chart

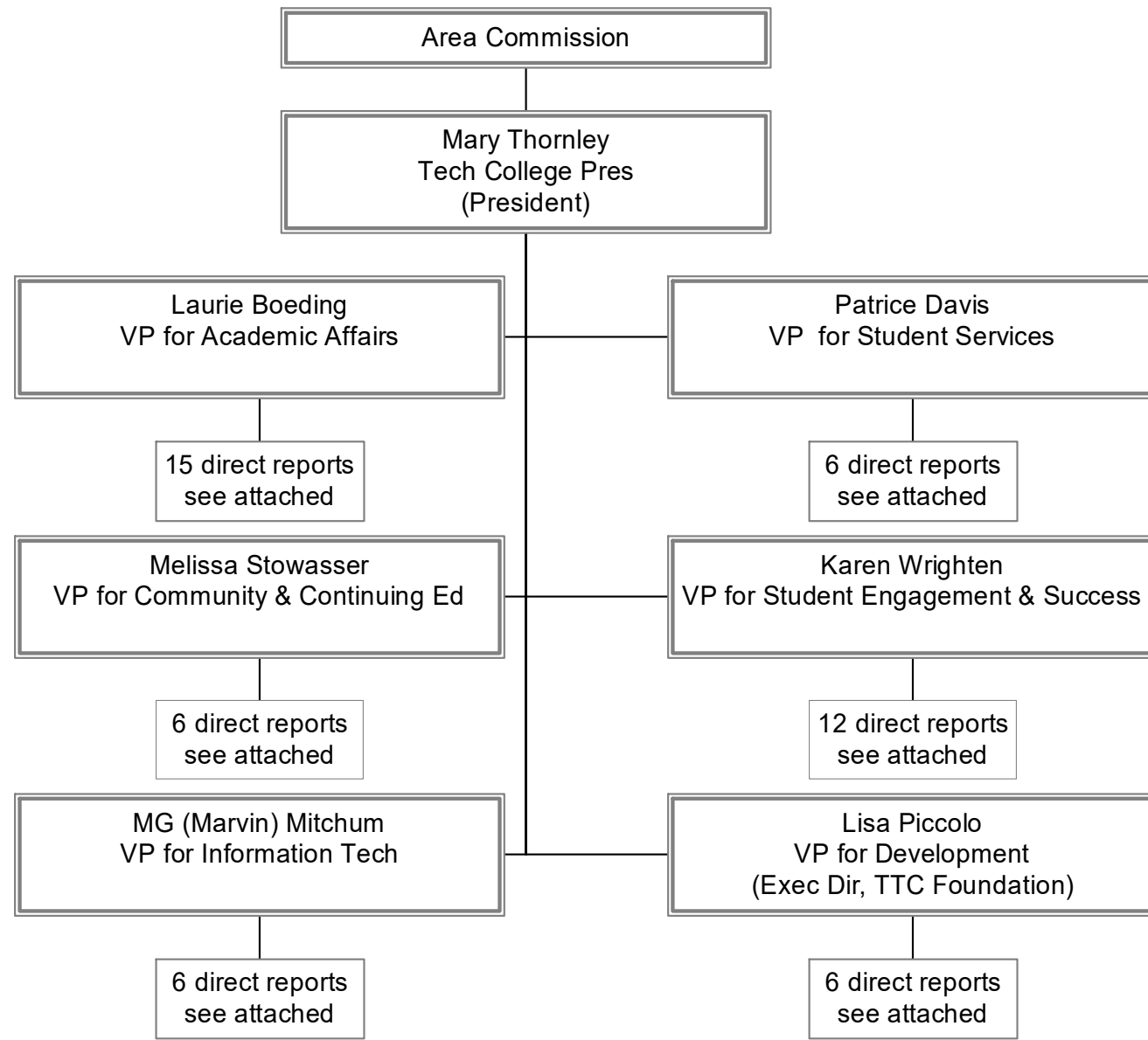
- **President's Office** (Dr. Mary Thornley)
 - Human Resources (Mrs. DeVetta Hughes)
 - Planning & Accreditation (Mrs. Samantha Richards)
- **Academic Affairs** (Dr. Laurie Boeding)
 - Business Technology
 - Culinary Institute of Charleston
 - Business Technology & The Online College
 - Engineering and Construction
 - Film, Media and Visual Arts
 - Health Sciences
 - Humanities and Social Sciences
 - Law Related Studies
 - Manufacturing and Maintenance
 - Nursing
 - Science and Mathematics
- **Community and Continuing Education** (Ms. Melissa Stowasser): Community Partnerships and Education Services
- **Advancement** (Mrs. Marguerite “Meg” Howle): Public Information and Graphics Design (Marketing)
- **Development** (Mrs. Lisa Piccolo)
- **Business Affairs** (Mr. Eugene Creson): Bookstore; Economic Development; Facilities Management; Facility Services; Finance; Procurement; and Public Safety
- **Student Services** (Dr. Patrice Davis): Enrollment Management; Student Development; Registrar’s Office; and Student Services
- **Student Engagement & Success** (Dr. Karen Wrighten): Educational Opportunity Programs; Student Engagement; Recruitment and Student Employment Services; Admissions; and Student Success
- **Information Technology** (Mr. Marvin “MG” Mitchum): Operations; Programming; Endpoint Services; Customer Services Support; Audio Visual Services; Network Support; Datacenter Support; and Security Services

KEY:
Box with double line = Supervisor

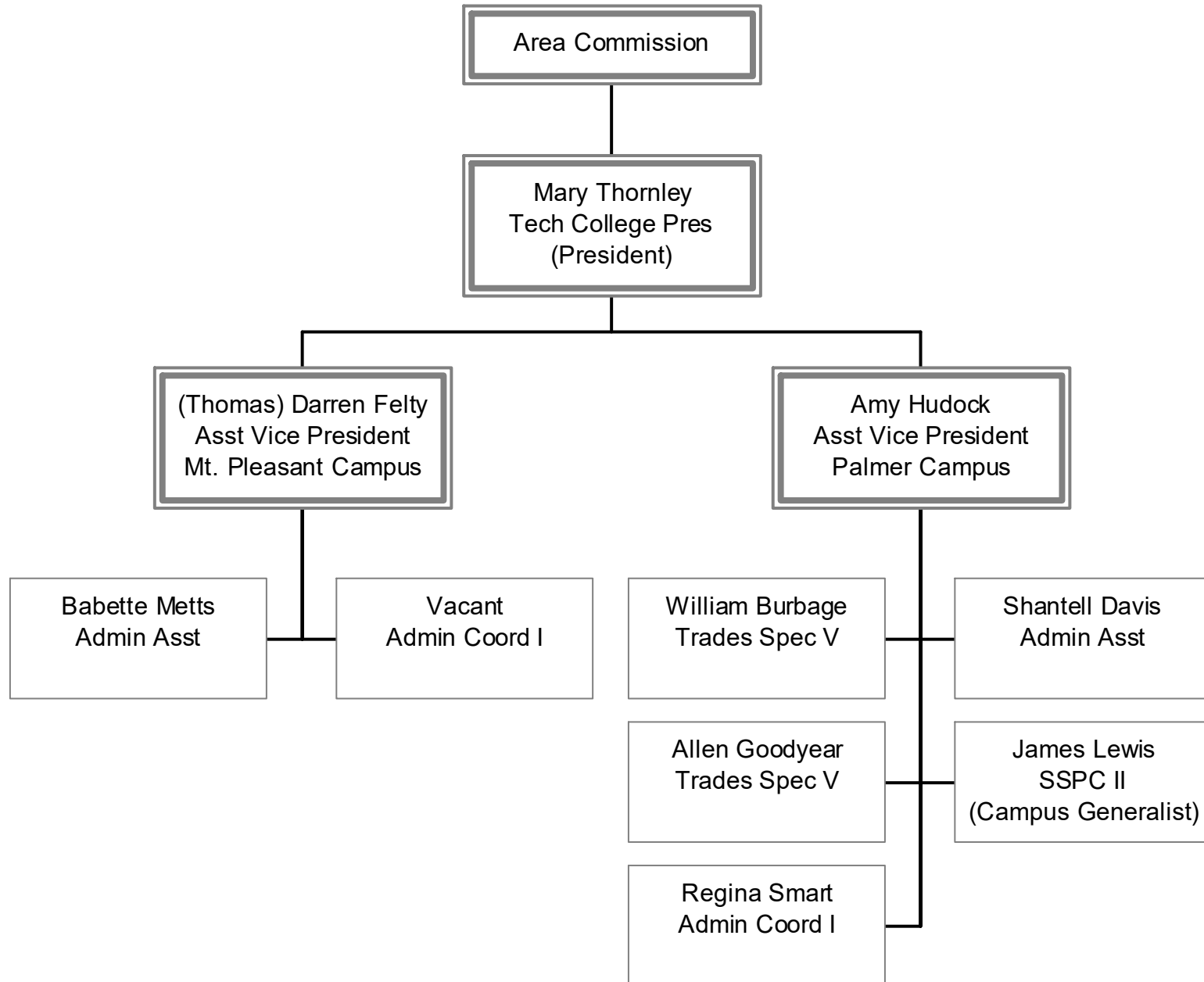
President's Office



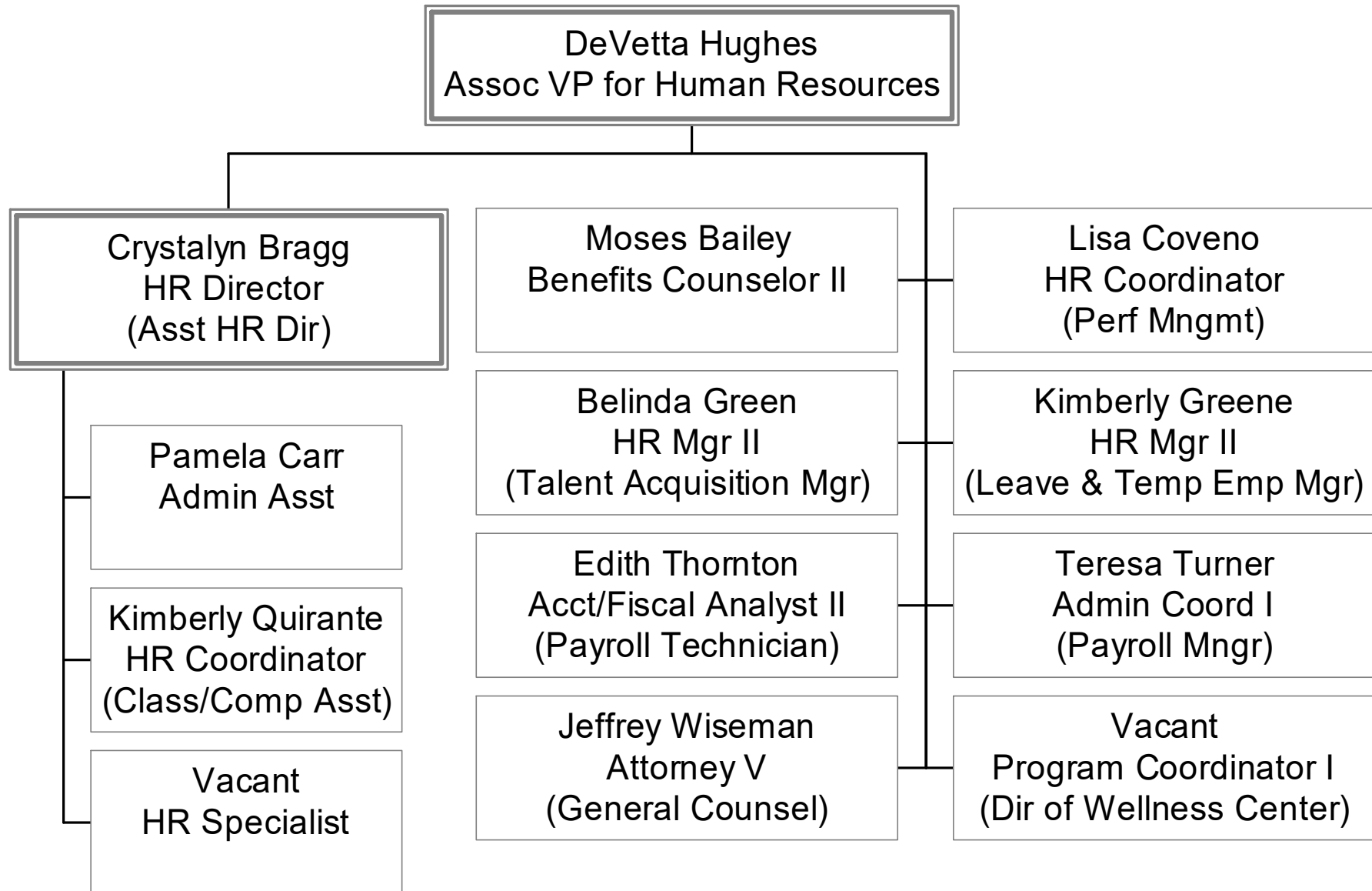
President's Office



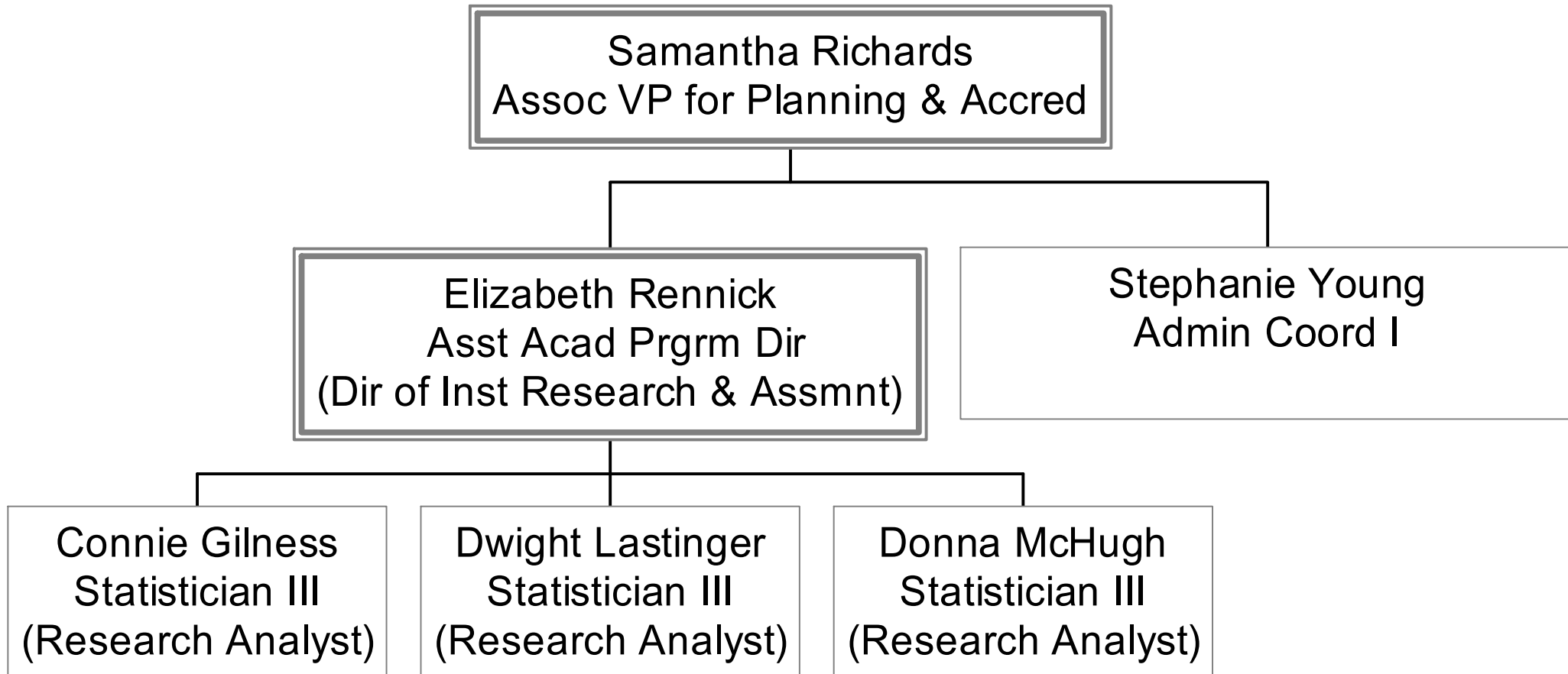
President's Office



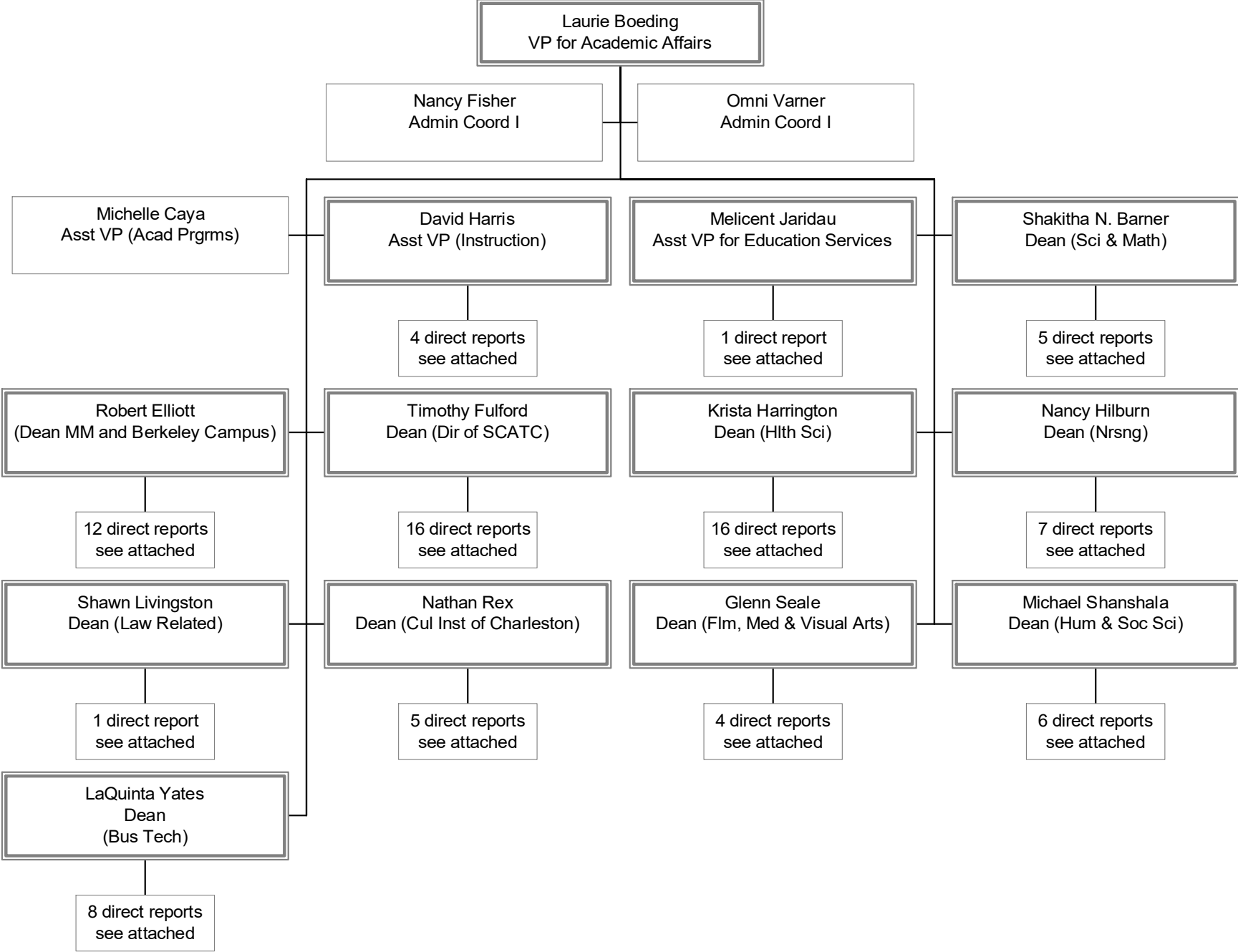
Human Resources



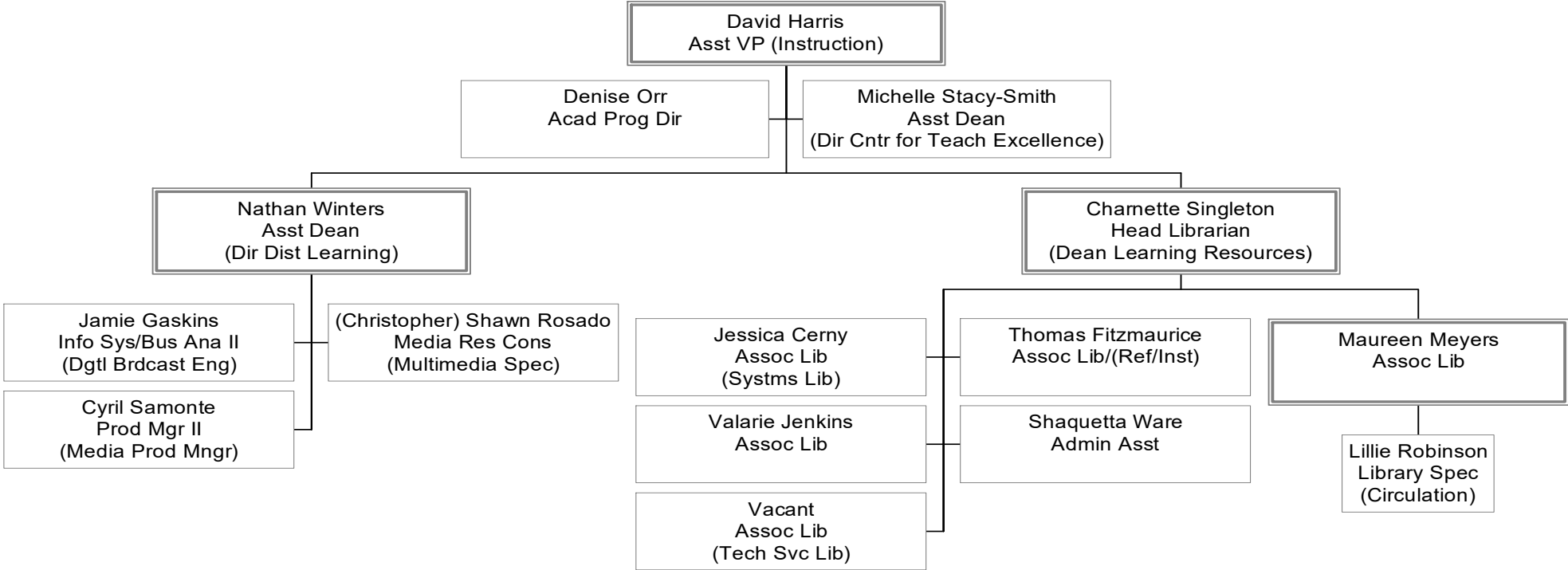
Planning and Accreditation



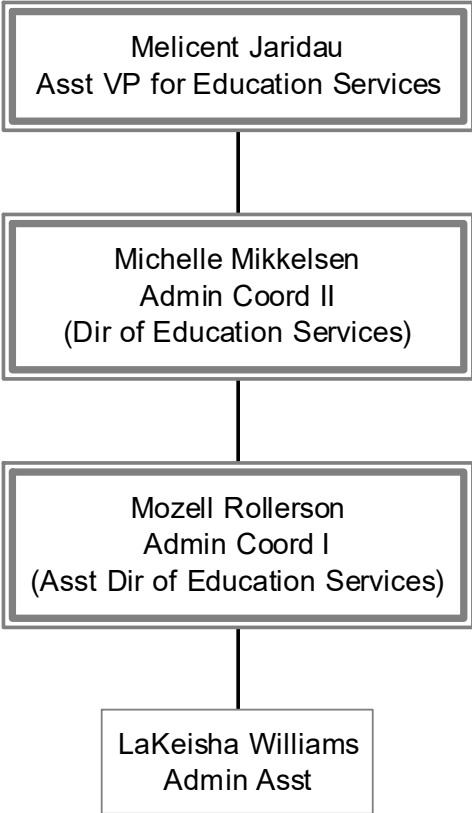
Academic Affairs



Academic Affairs

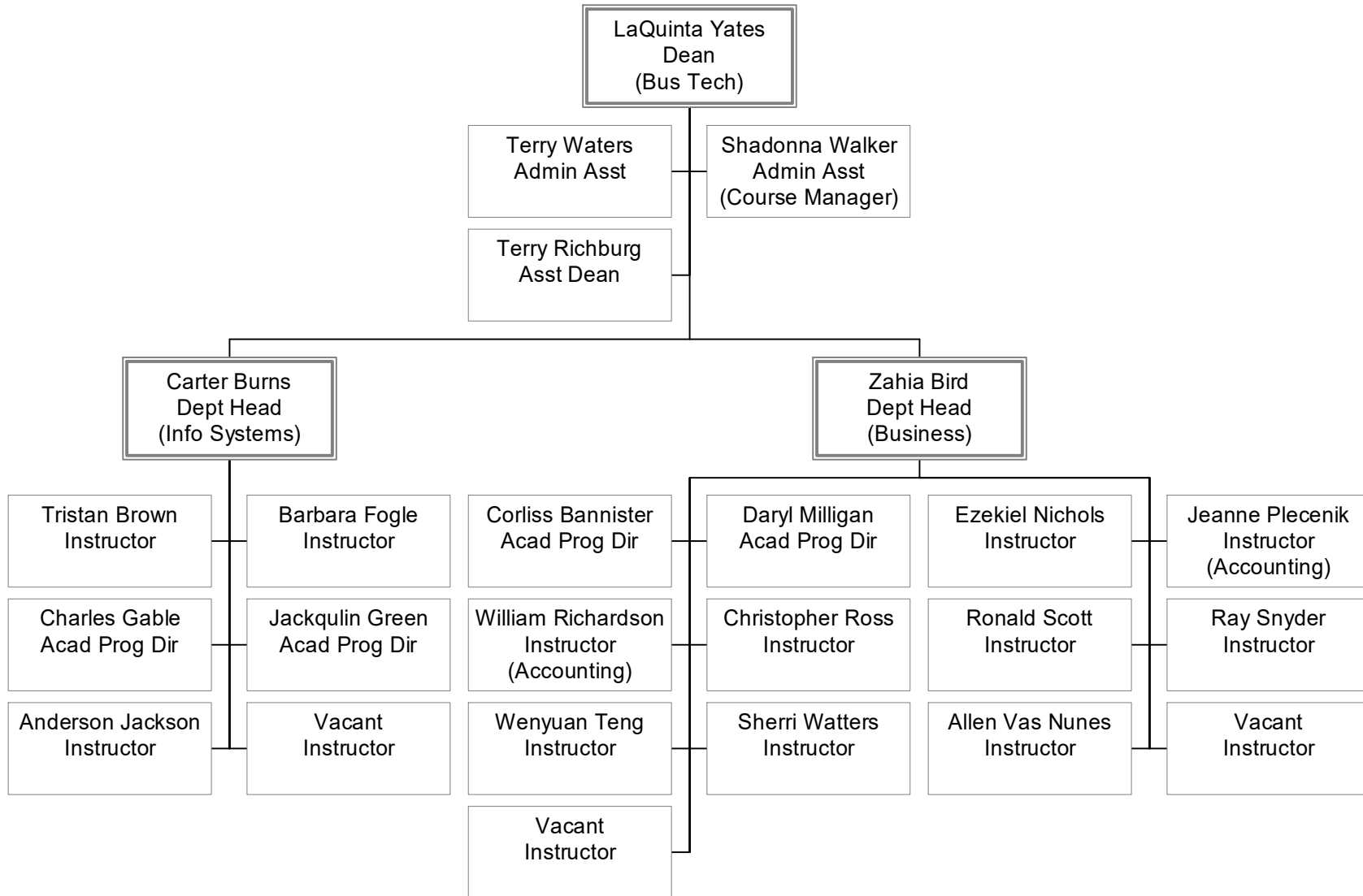


Academic Affairs



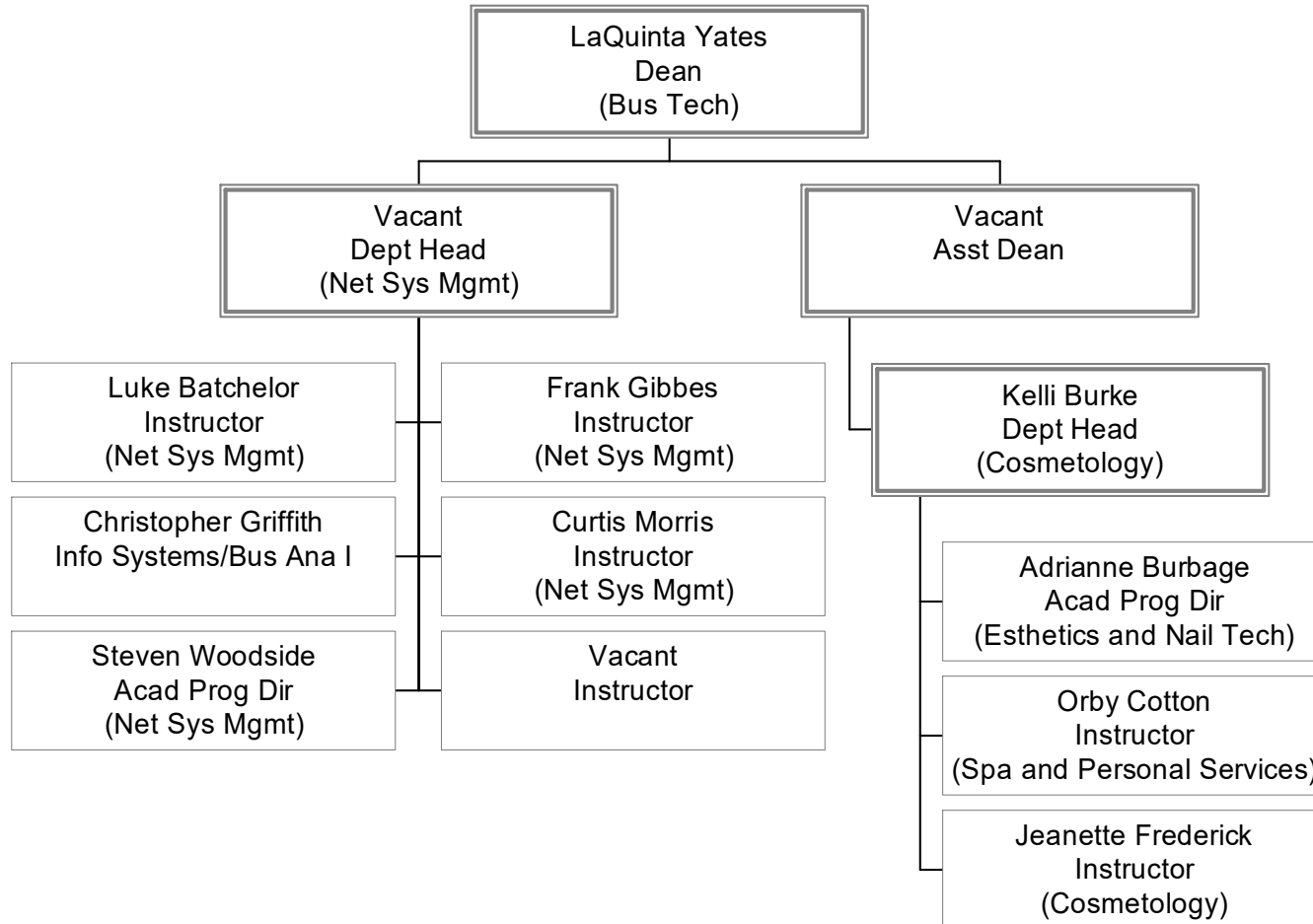
Business Technology

(a unit of the Division of Academic Affairs)



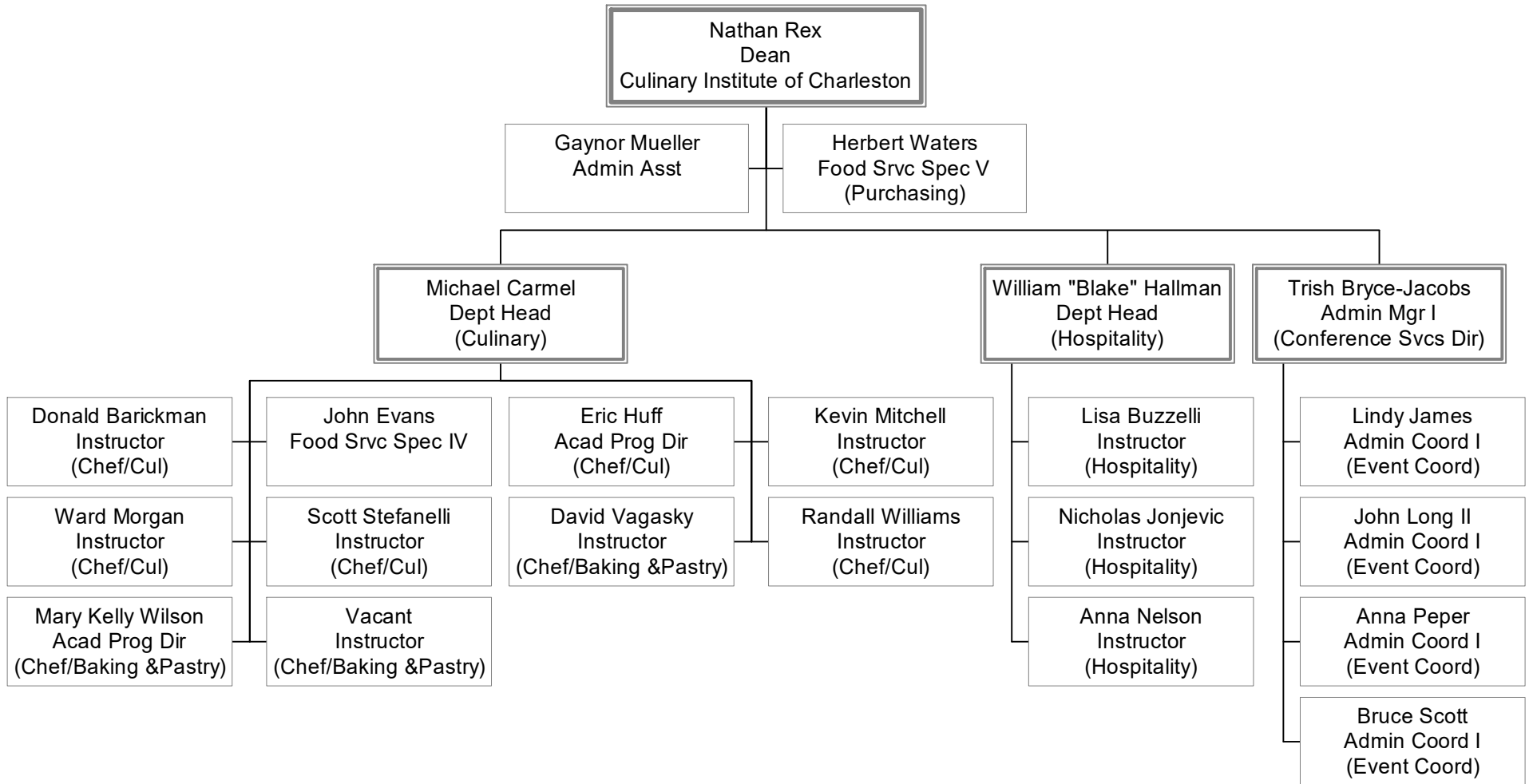
Business Technology

(a unit of the Division of Academic Affairs)



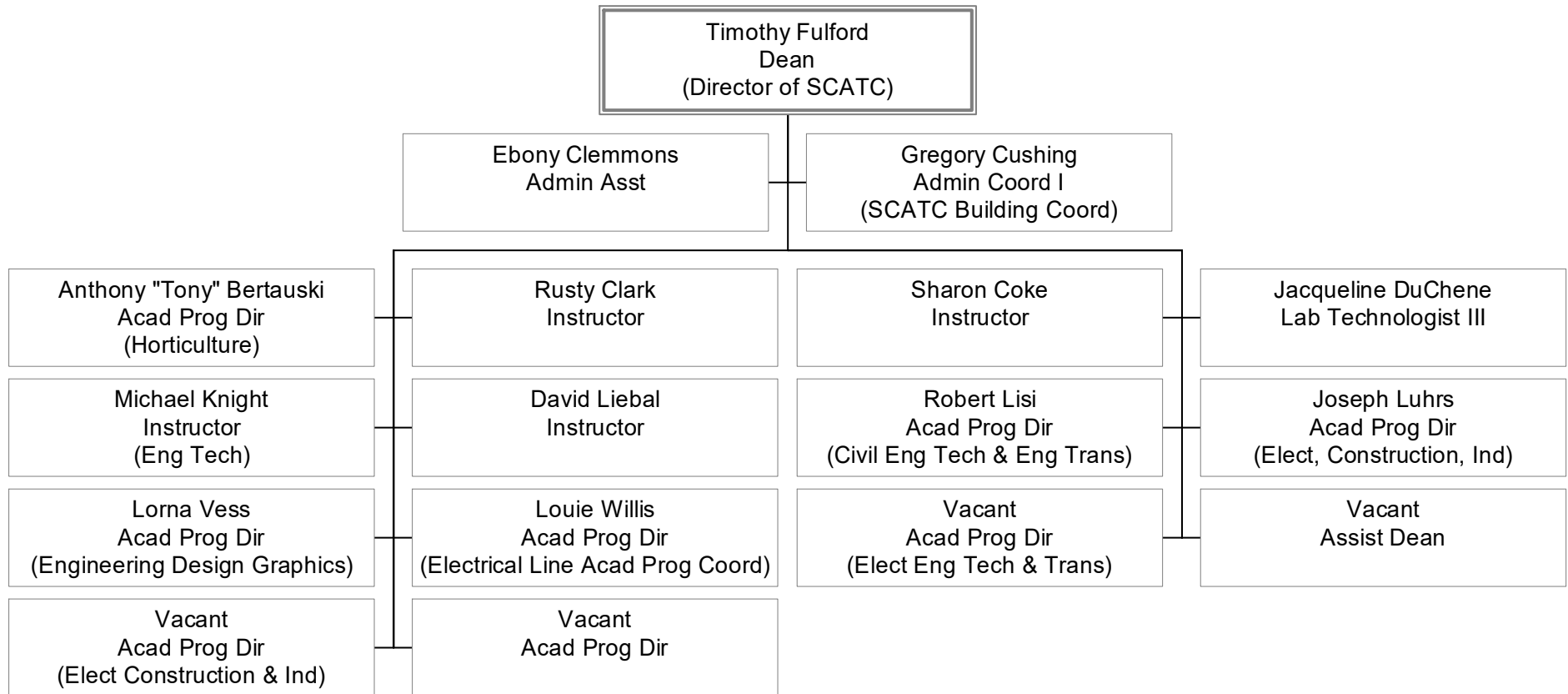
Culinary Institute of Charleston

(a unit of the Division of Academic Affairs)



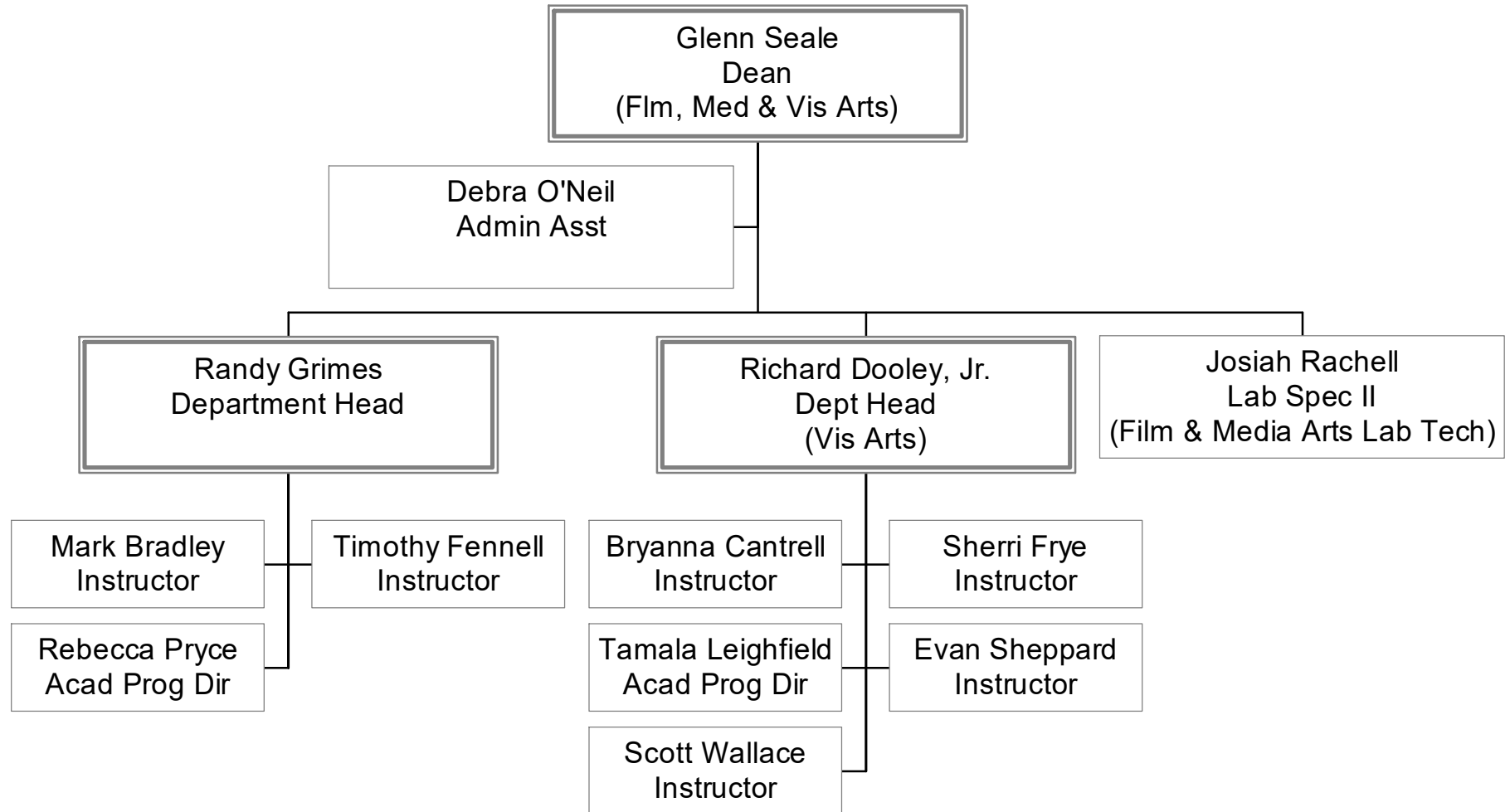
Engineering & Construction

(a unit of the Division of Academic Affairs)



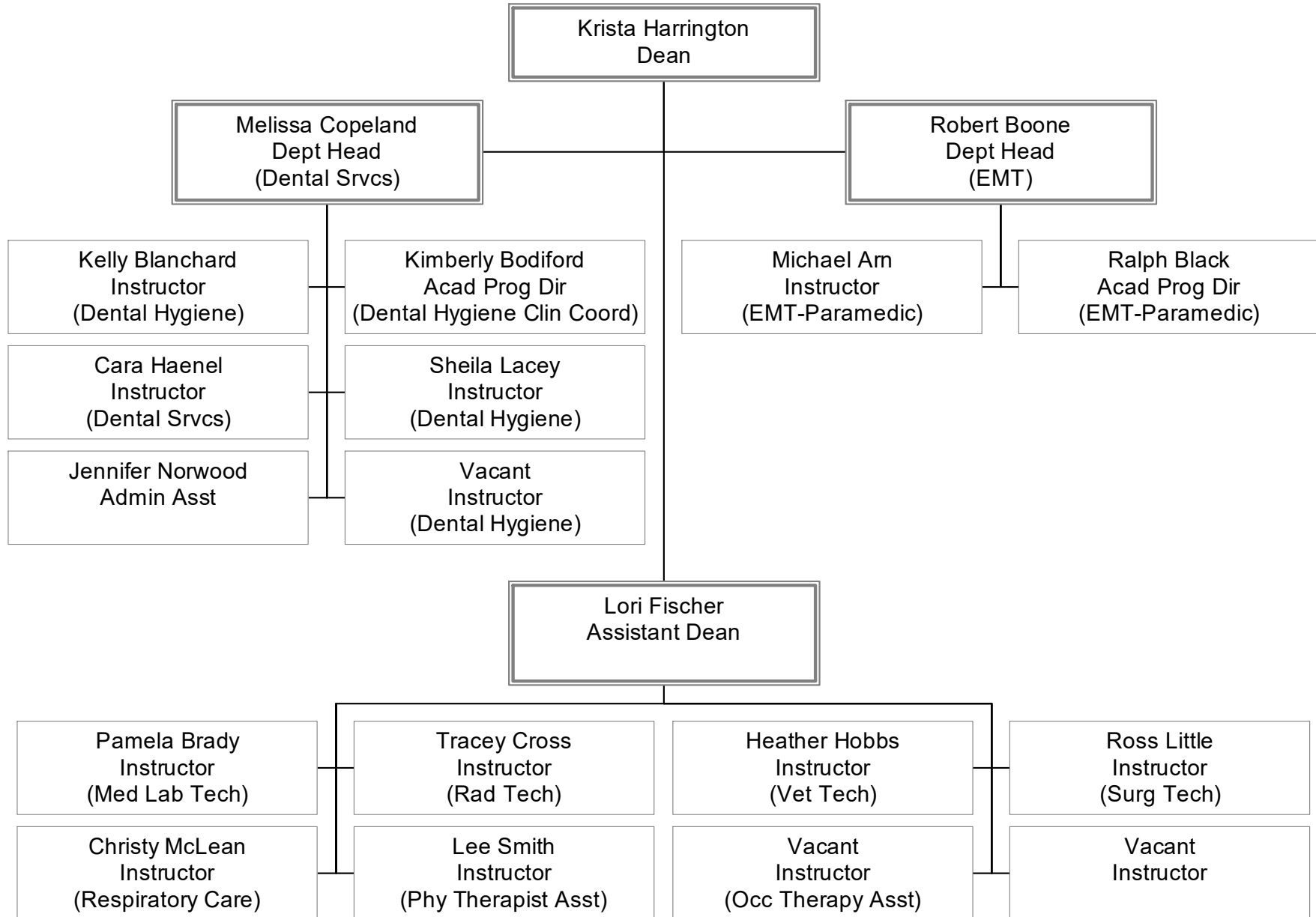
Film, Media and Visual Arts

(a unit of the Division of Academic Affairs)



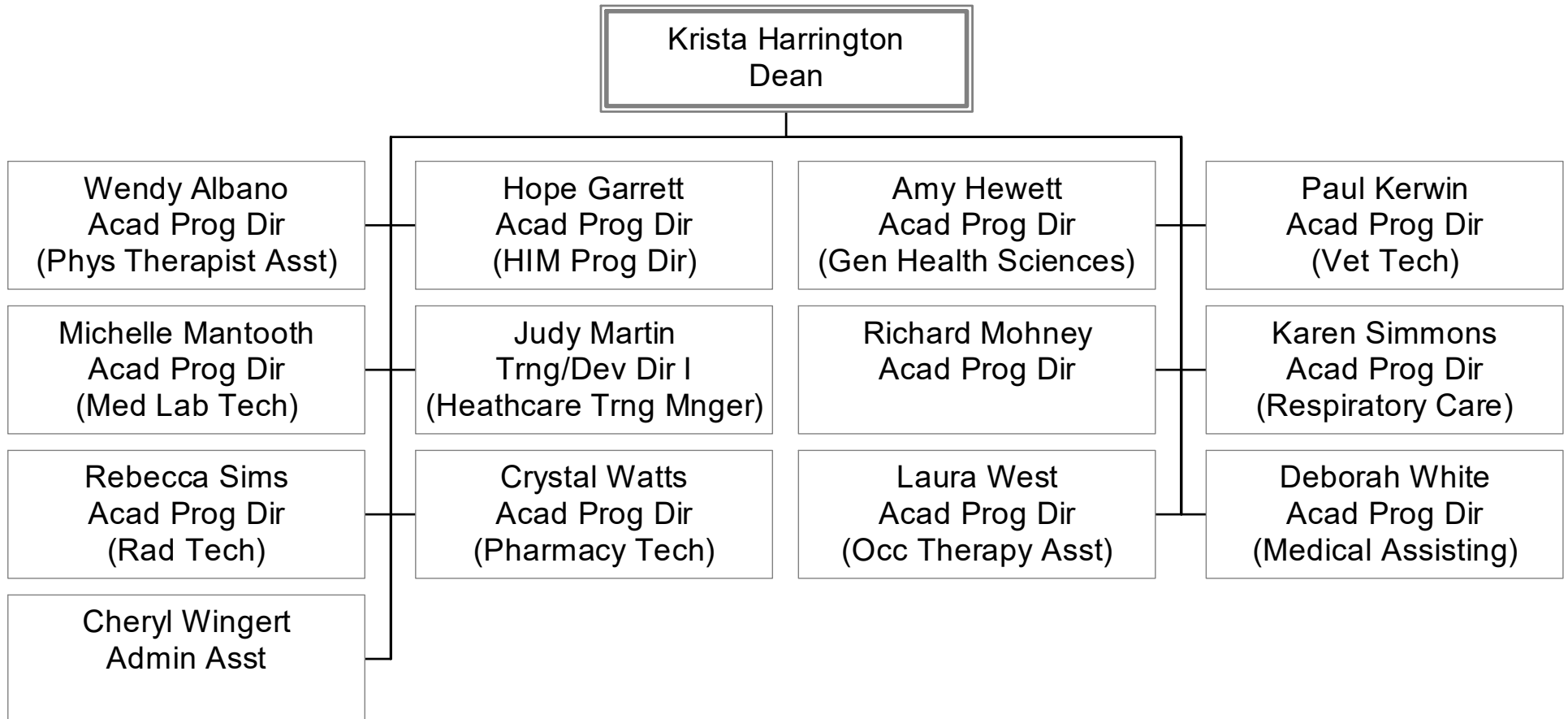
Health Sciences

(a unit of the Division of Academic Affairs)

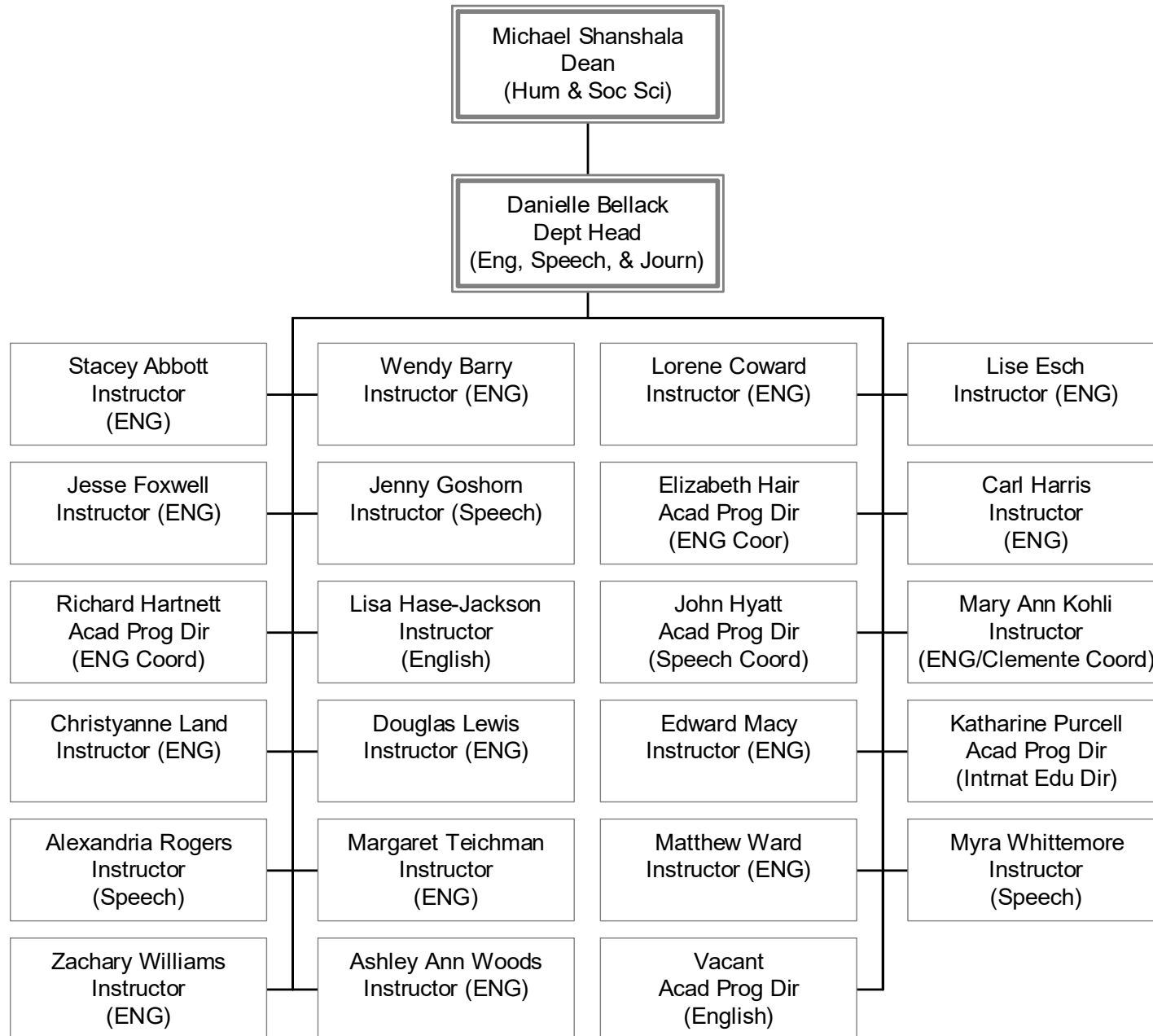


Health Sciences

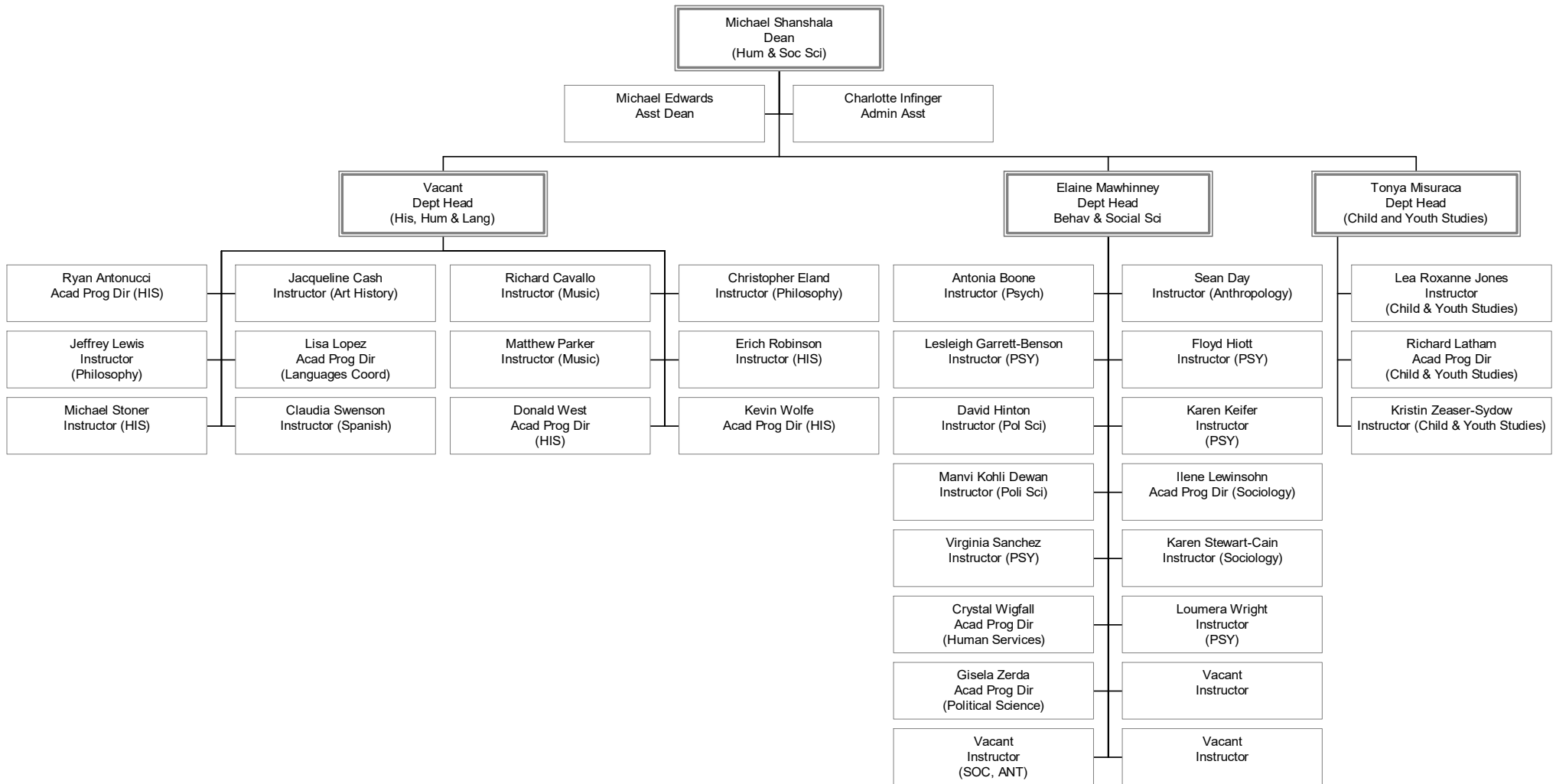
(a unit of the Division of Academic Affairs)



Humanities and Social Sciences (a unit of the Division of Academic Affairs)

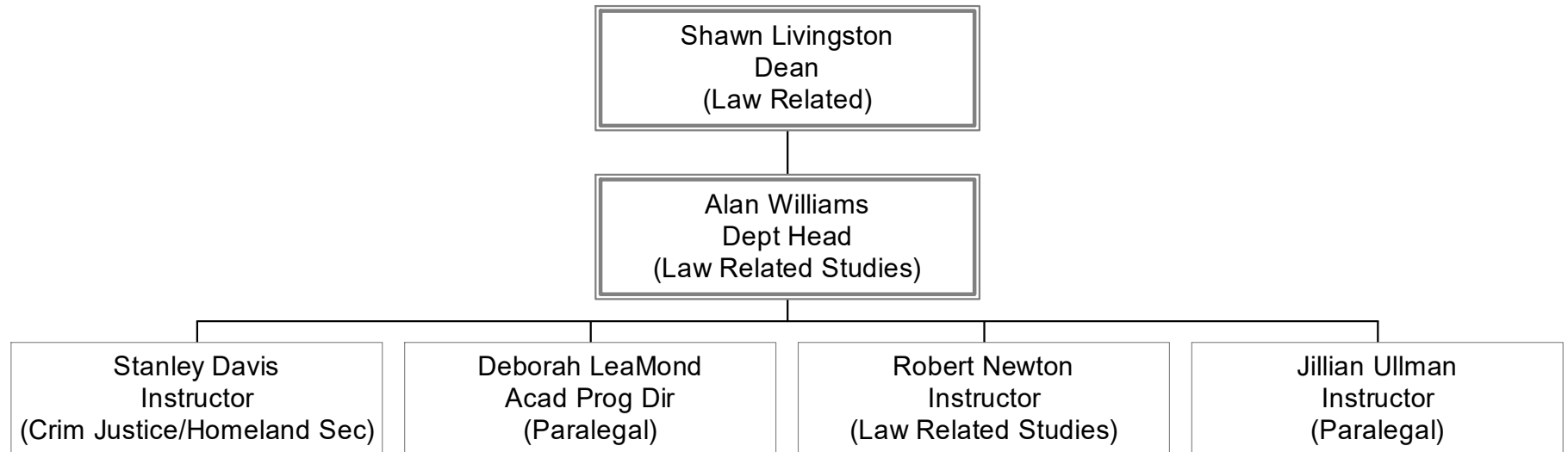


Humanities and Social Sciences (a unit of the Division of Academic Affairs)

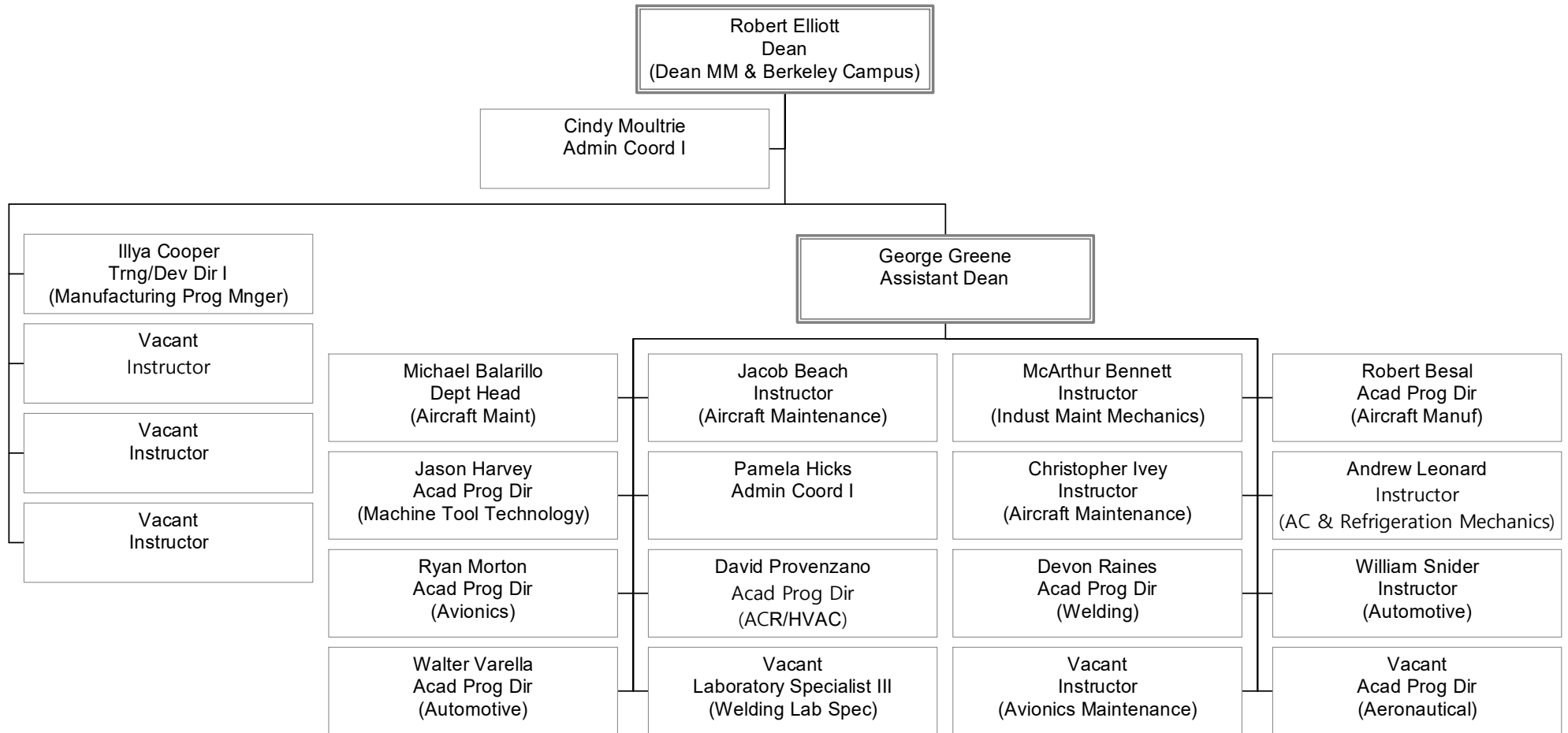


Law Related Studies

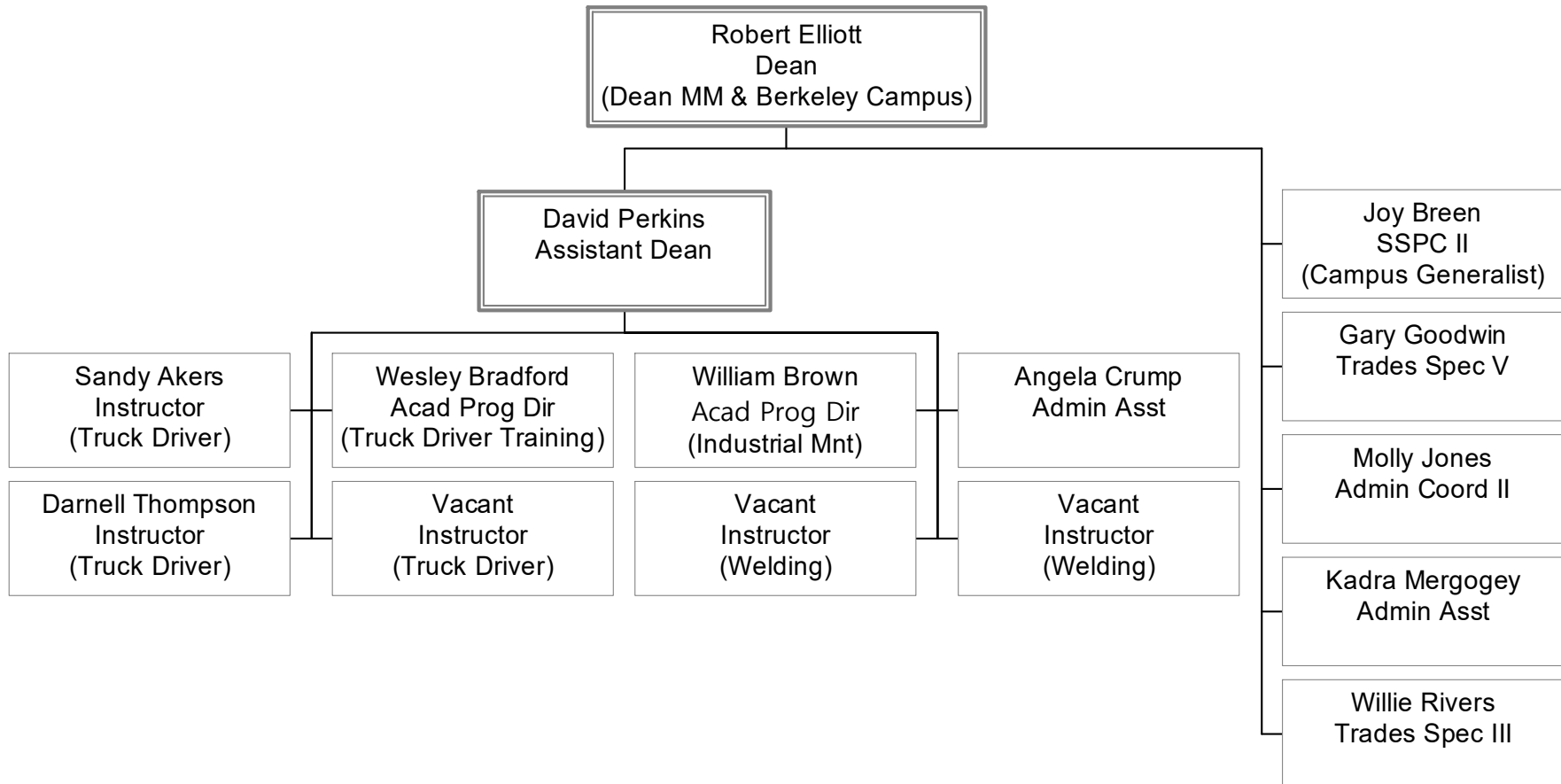
(a unit of the Division of Academic Affairs)



Manufacturing and Maintenance (a unit of the Division of Academic Affairs)

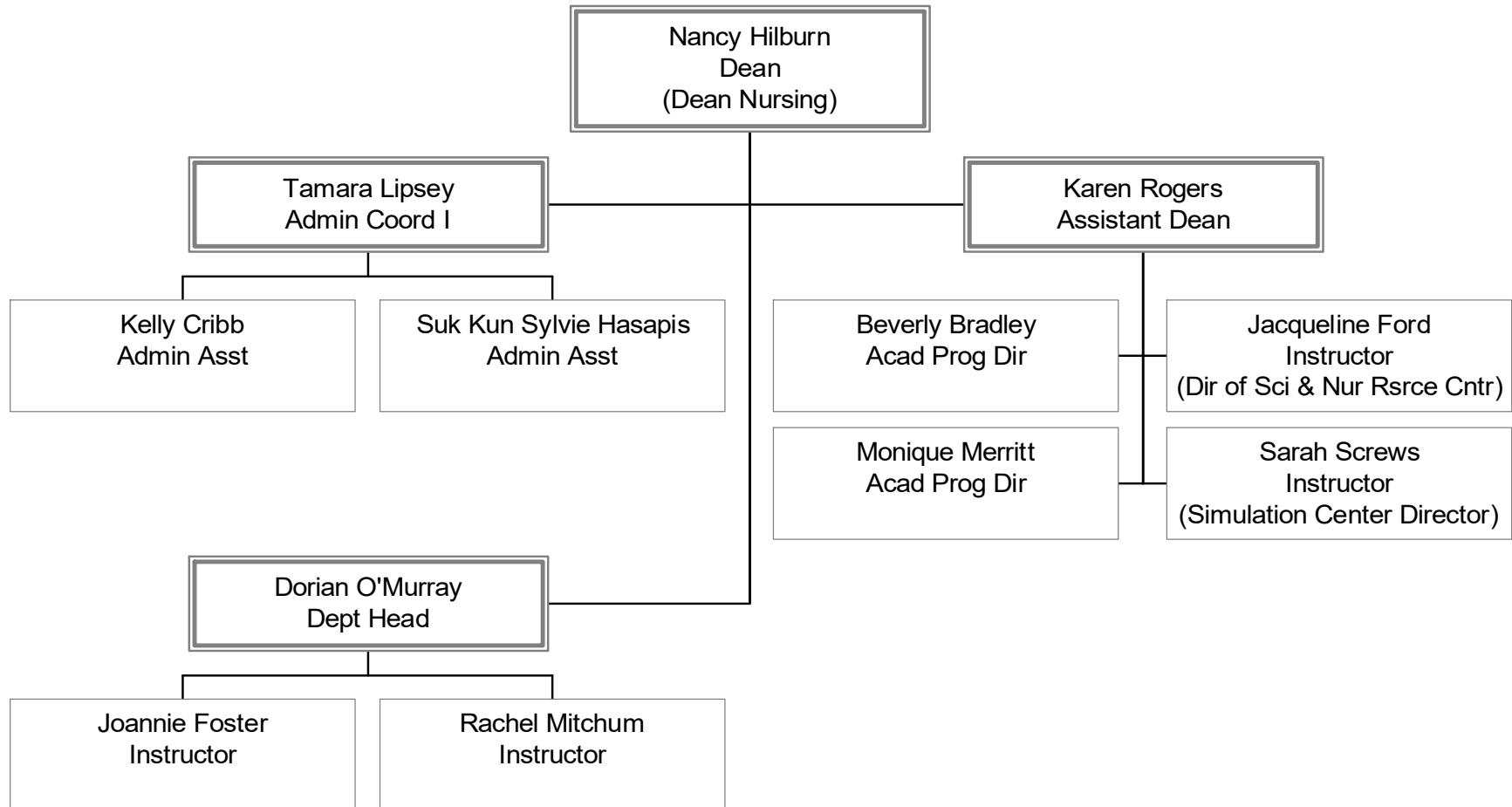


Manufacturing and Maintenance (a unit of the Division of Academic Affairs)



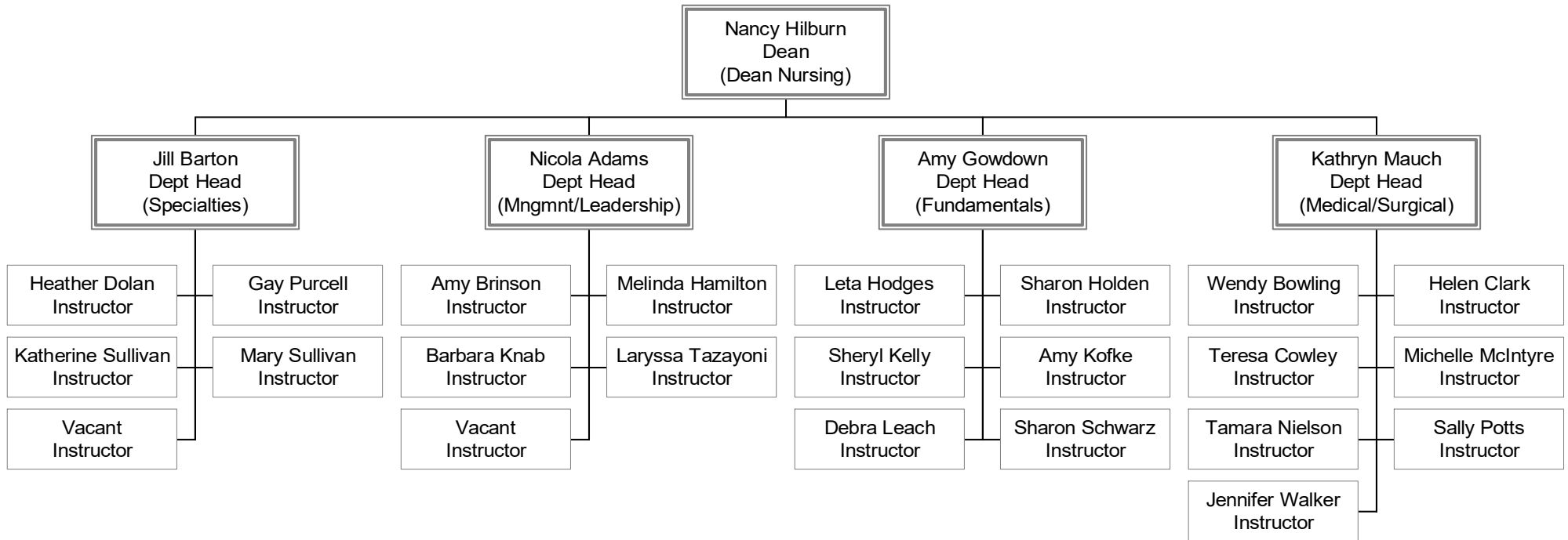
Nursing

(a unit of the Division of Academic Affairs)

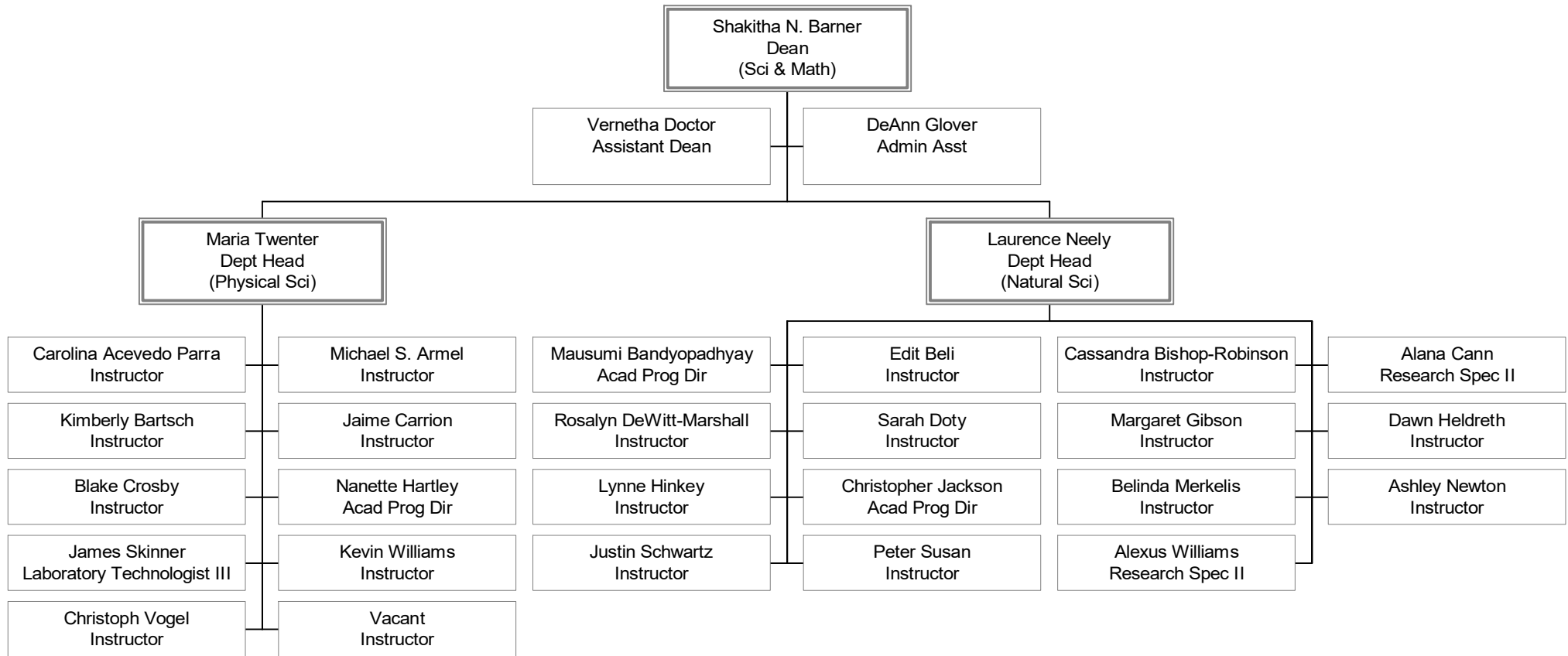


Nursing

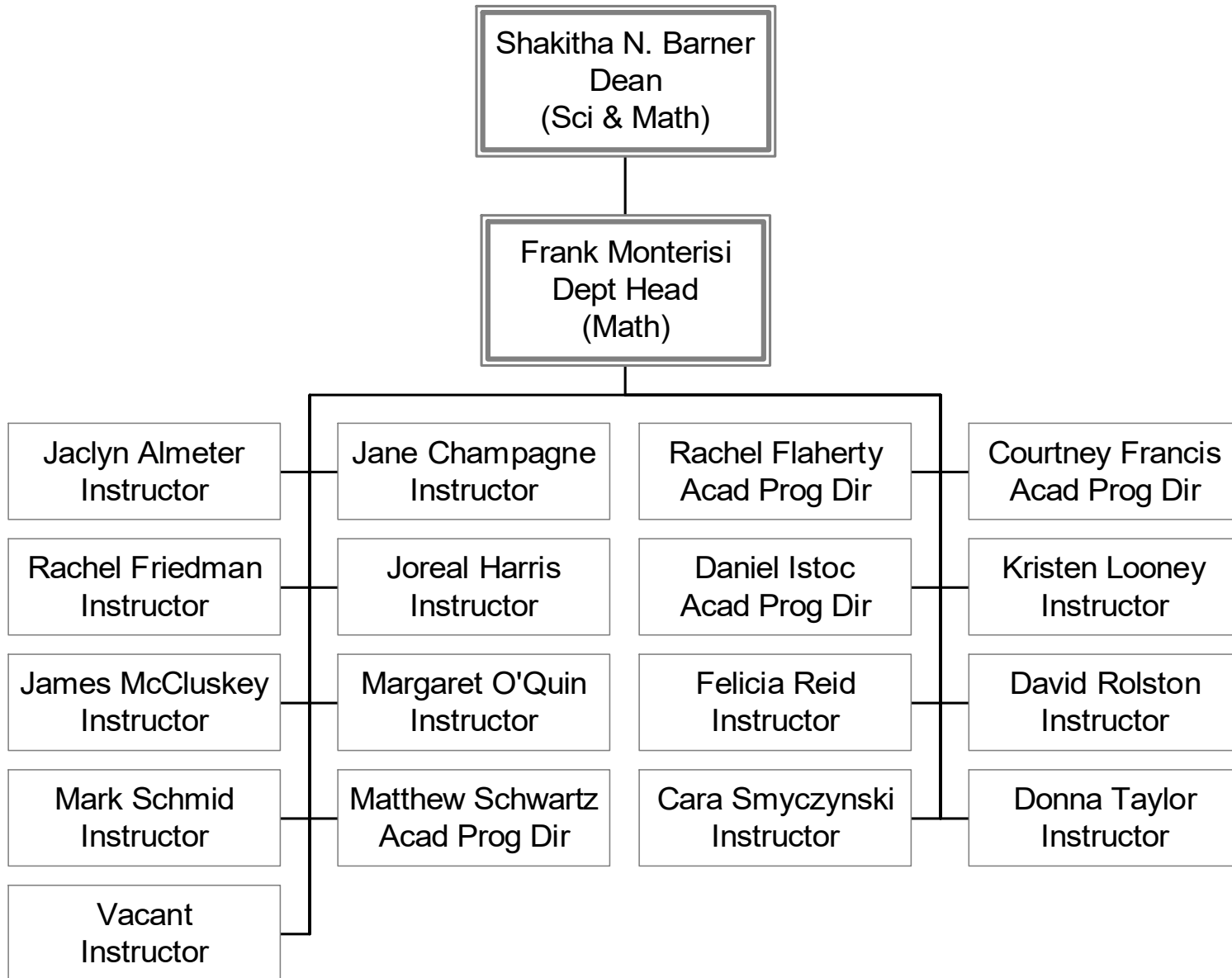
(a unit of the Division of Academic Affairs)



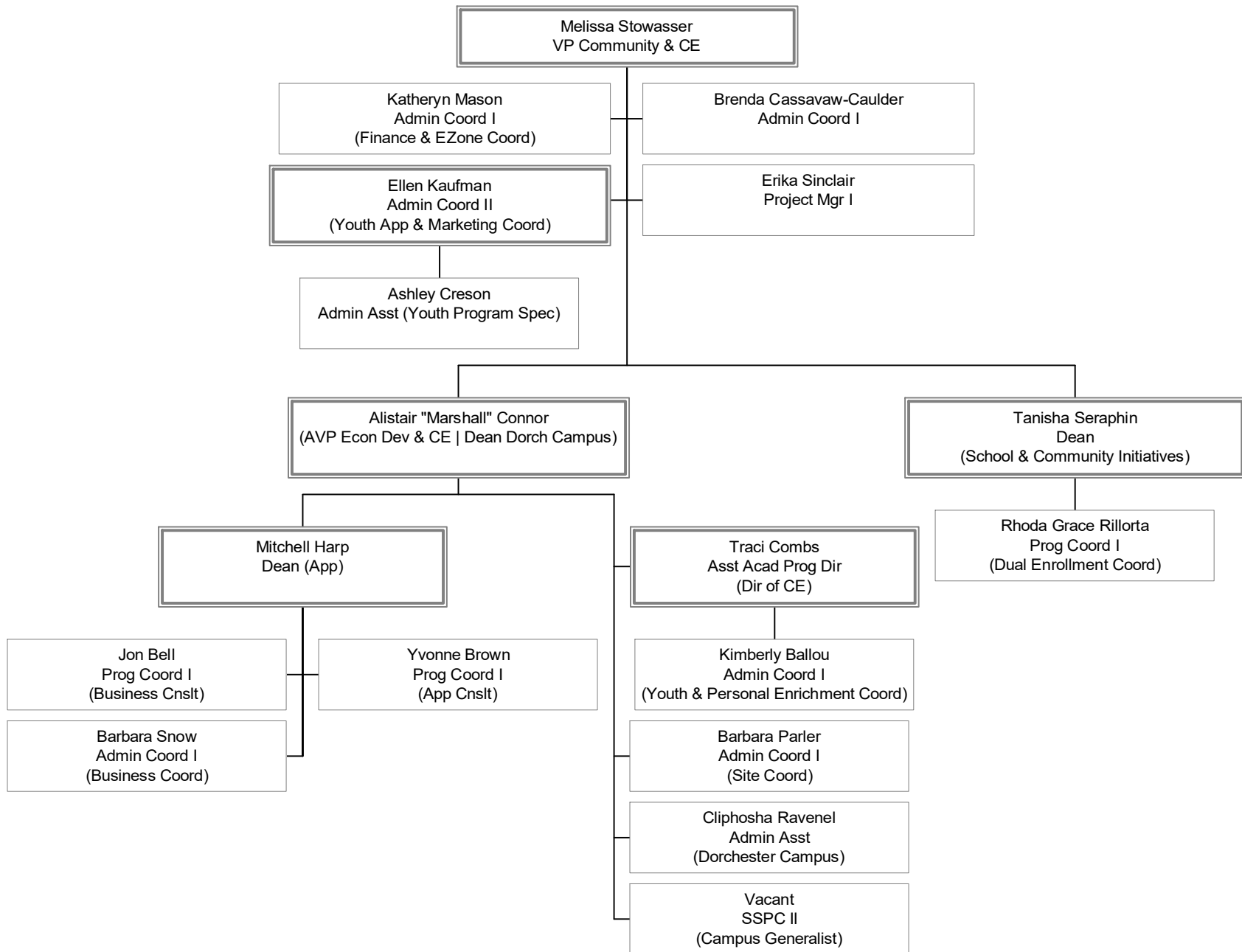
Science and Mathematics (a unit of the Division of Academic Affairs)



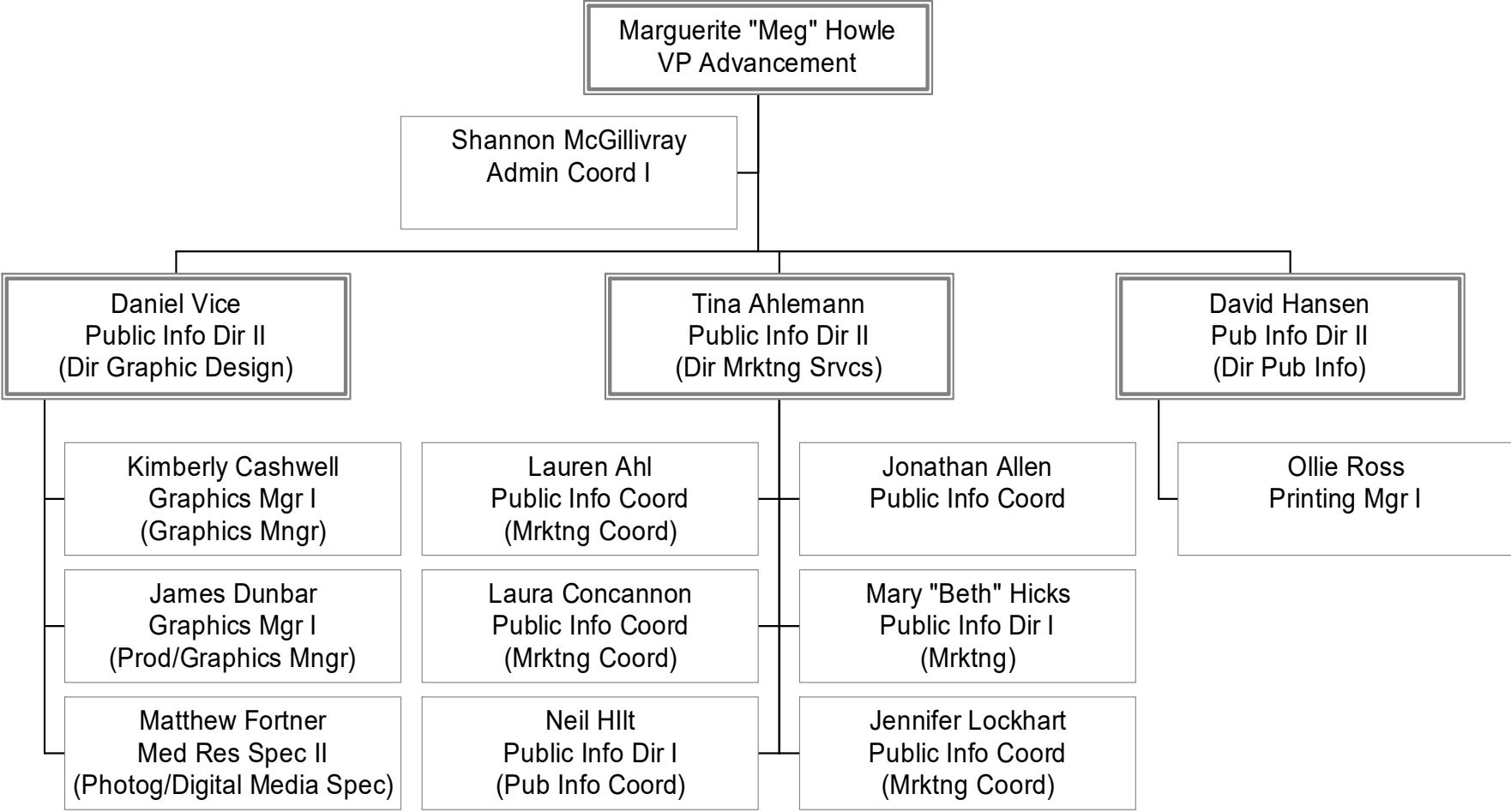
Science and Mathematics (a unit of the Division of Academic Affairs)



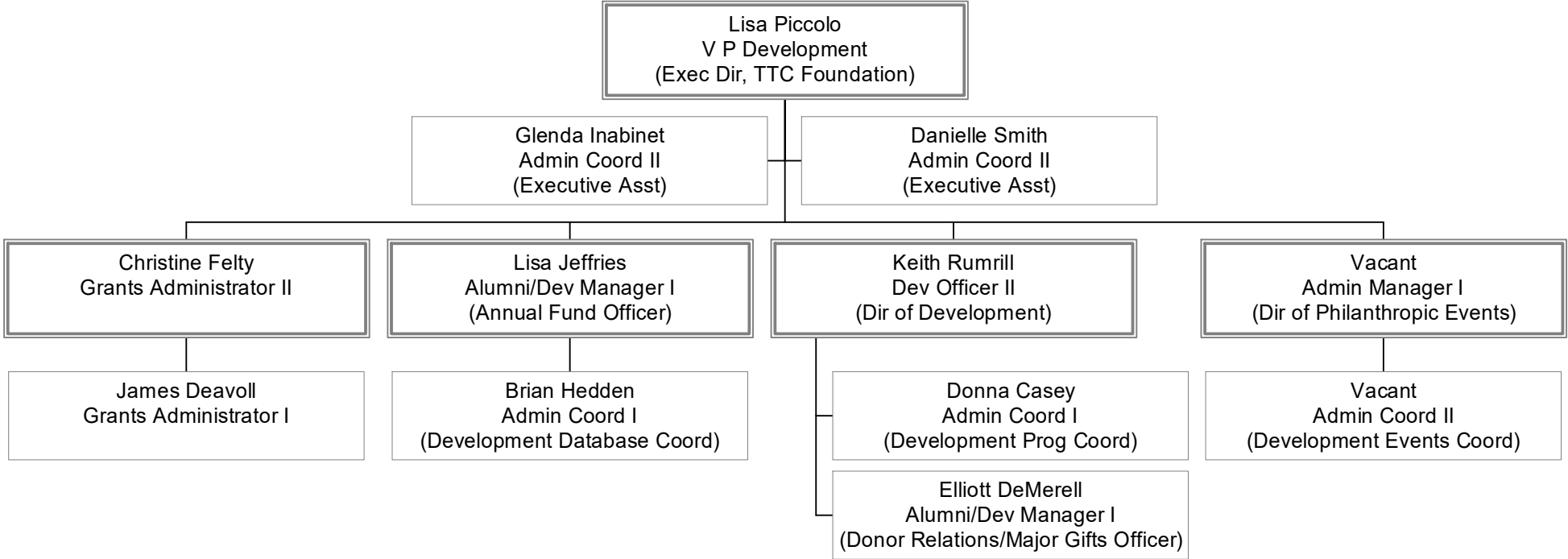
Community and Continuing Education



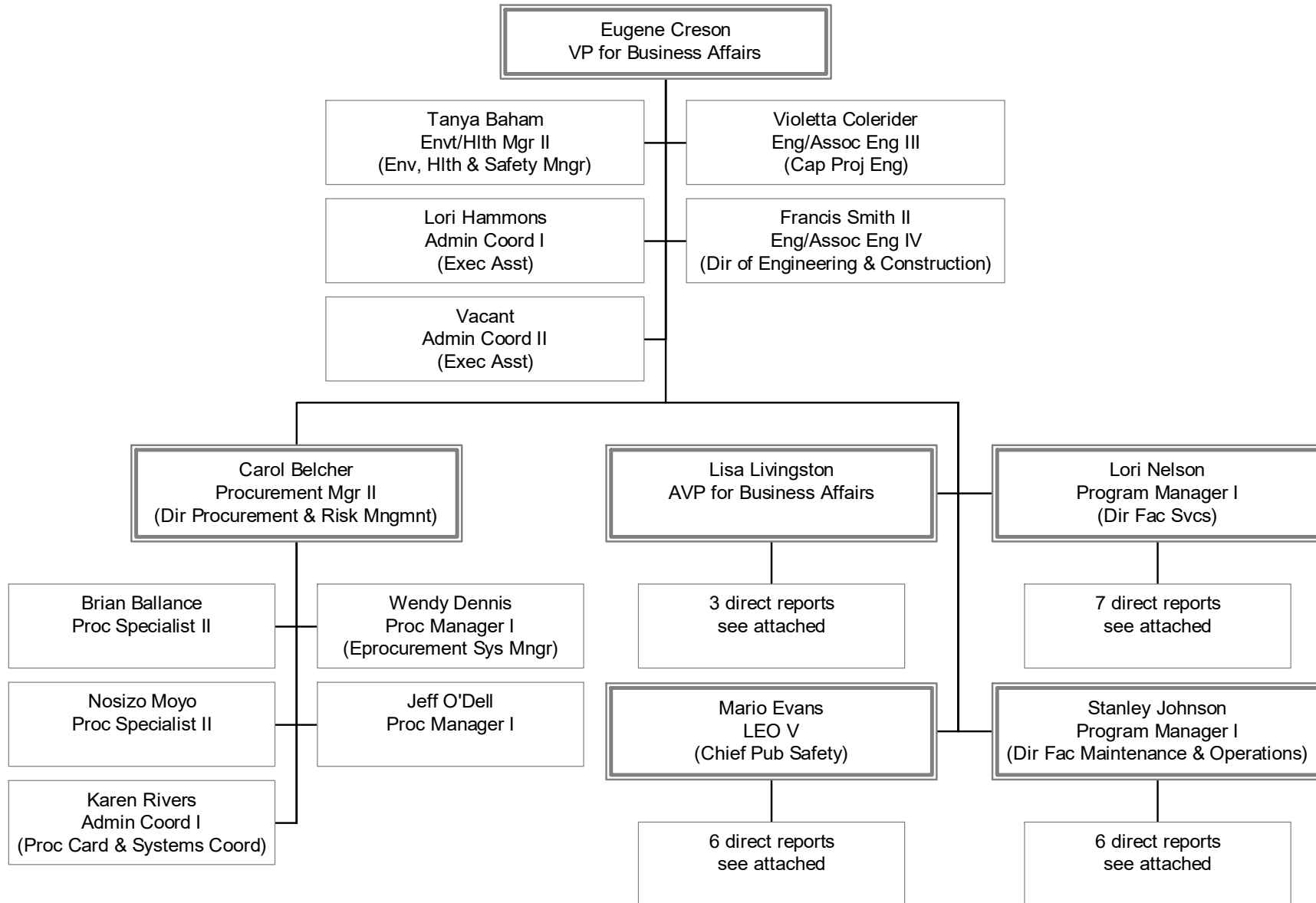
Advancement



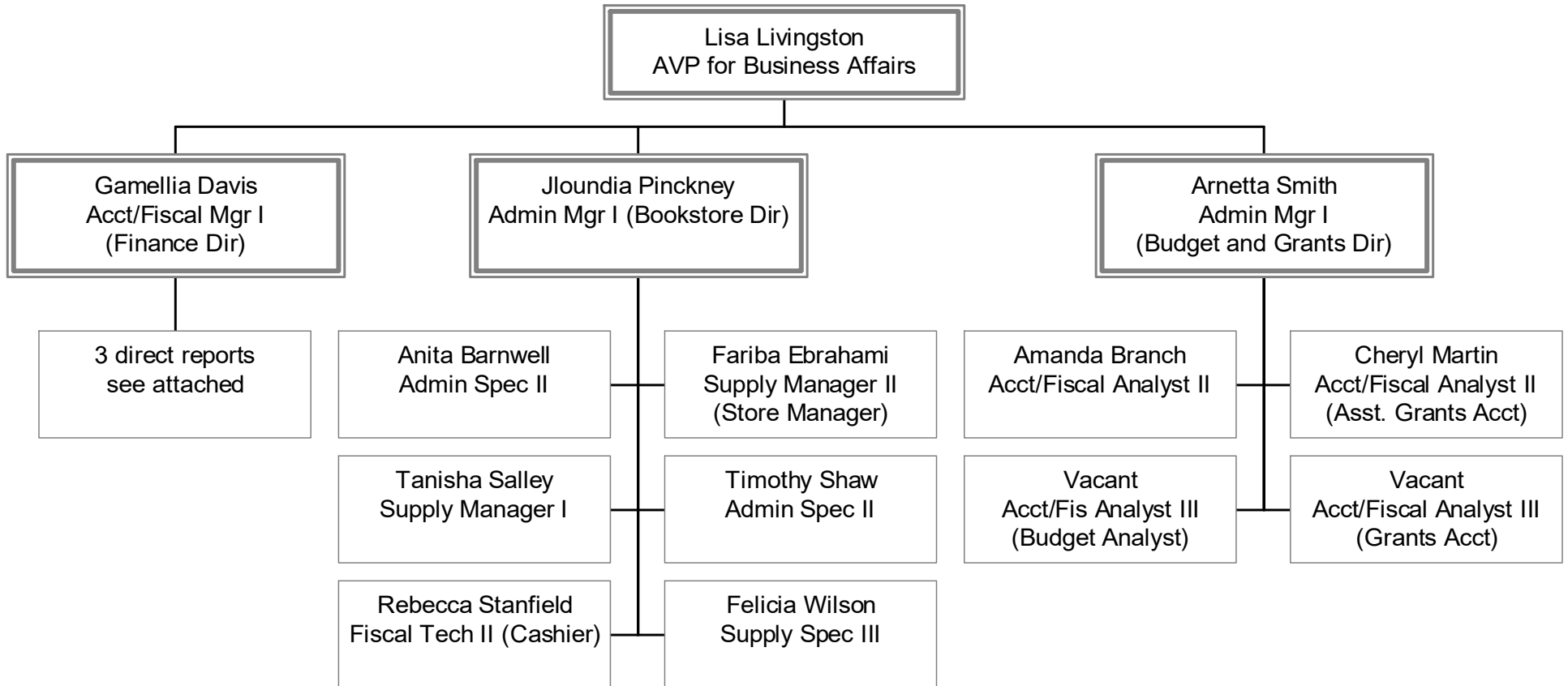
Development



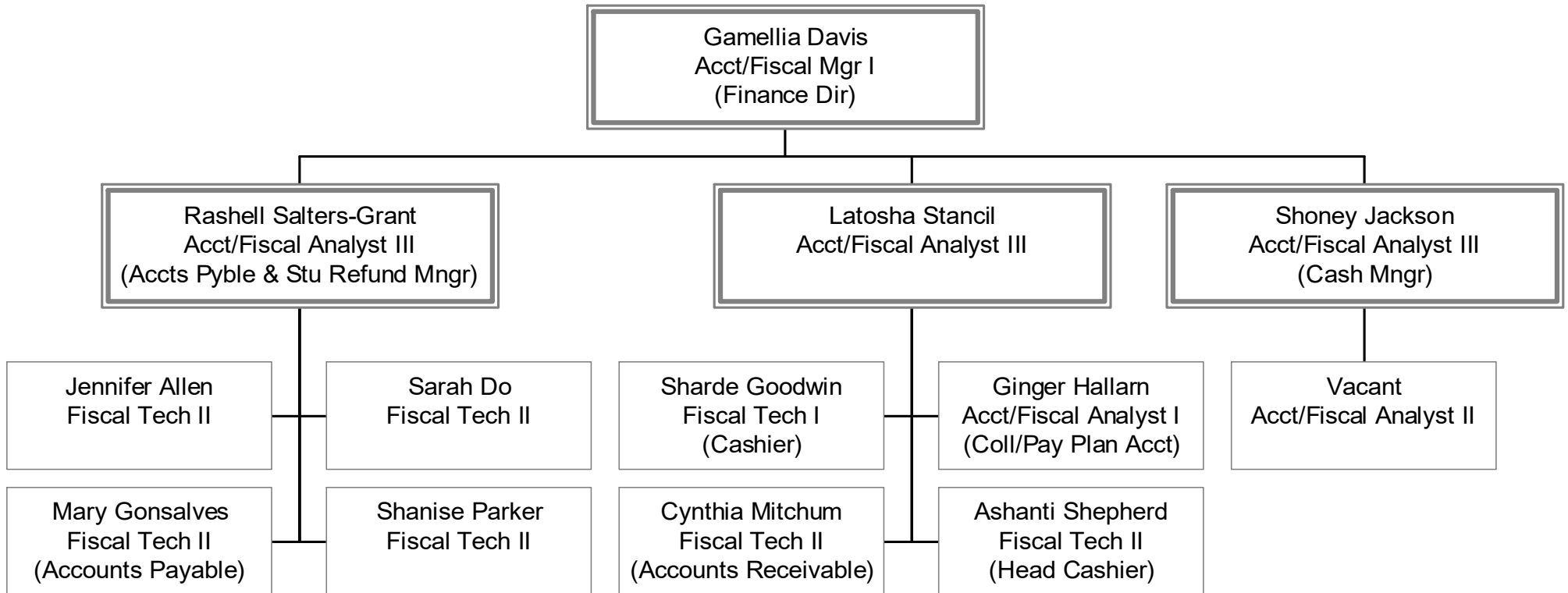
Division of Business Affairs



Division of Business Affairs

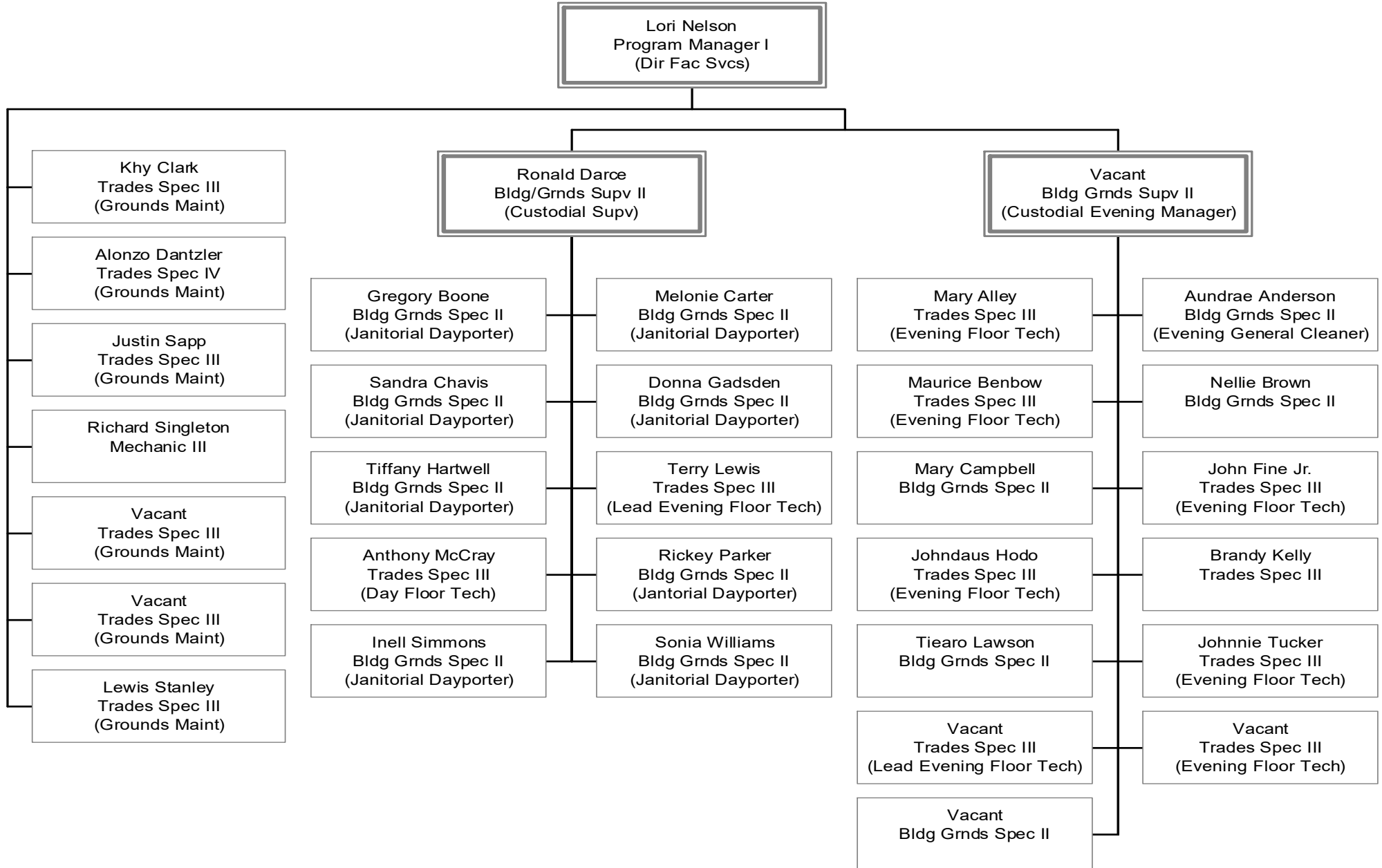


Division of Business Affairs



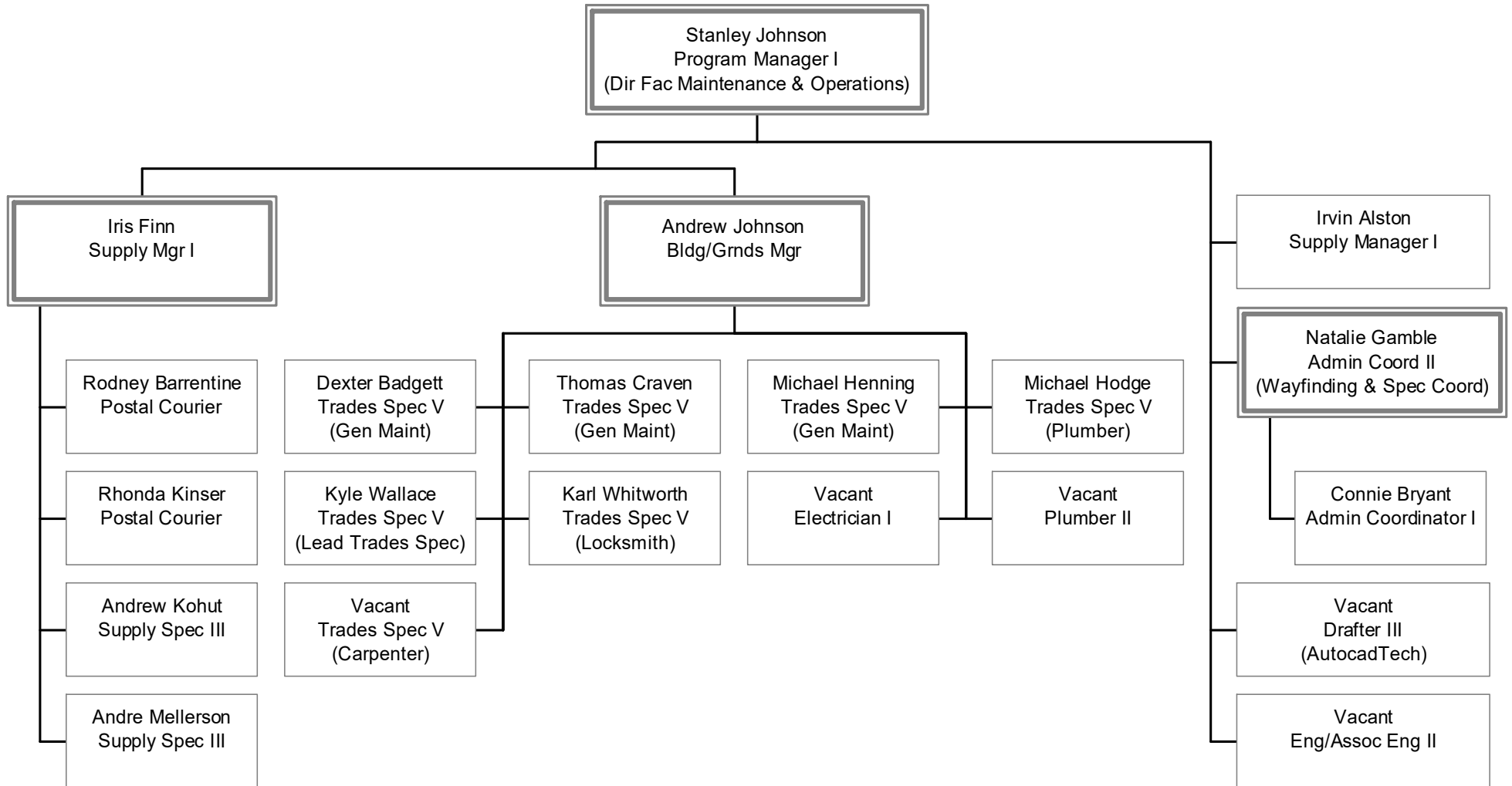
Facility Services

(a unit of the Division of Business Affairs)



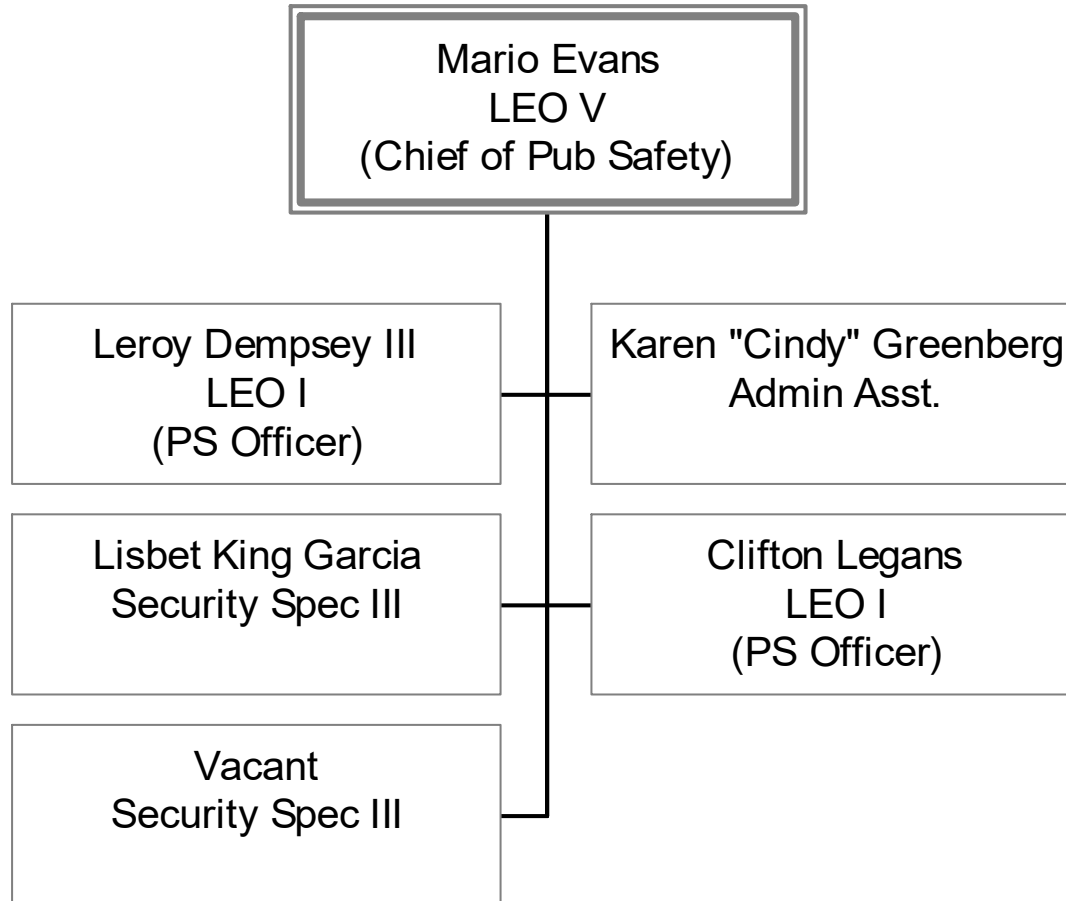
Facilities Management

(a unit of the Division of Business Affairs)



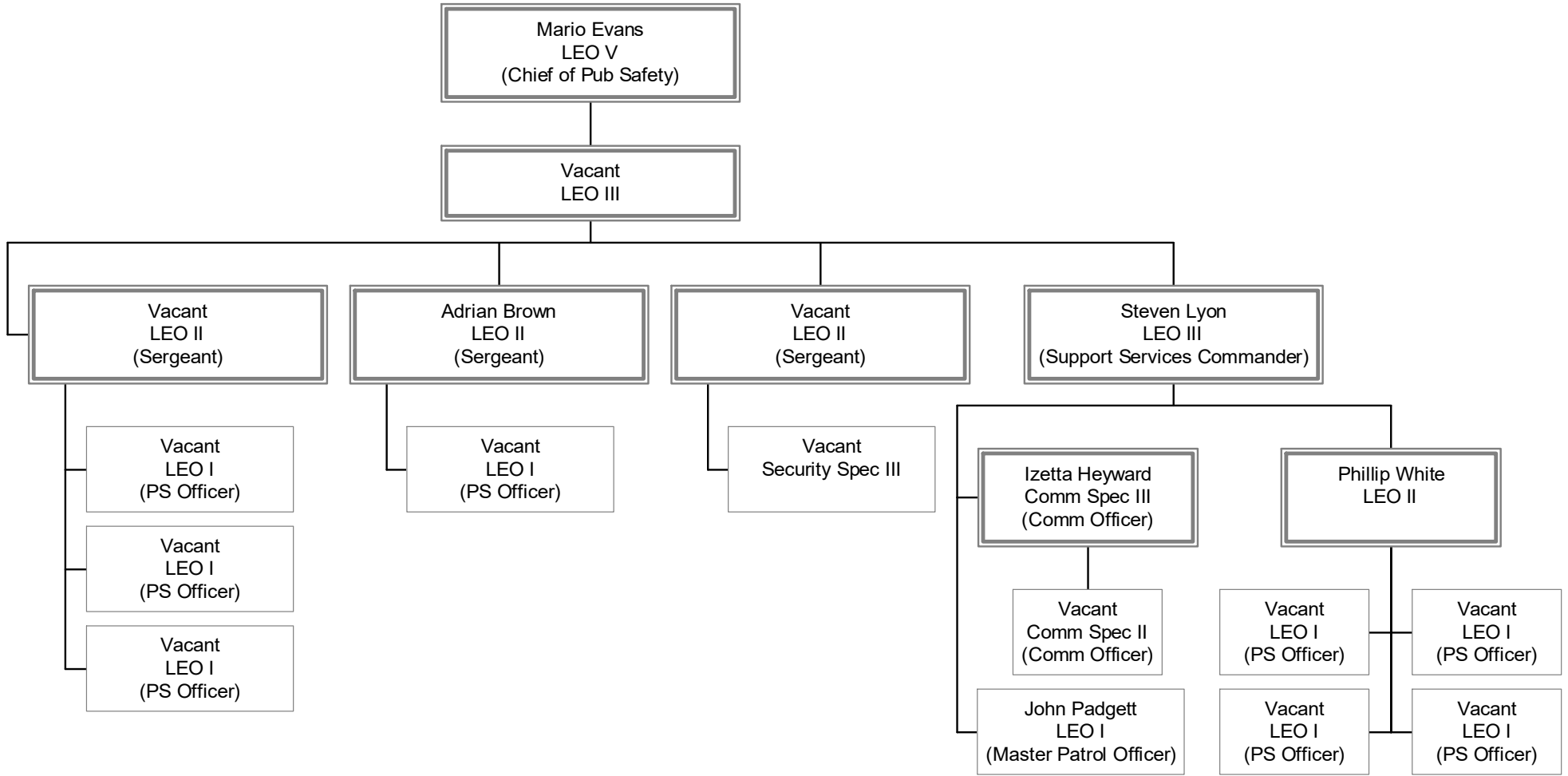
Public Safety

(a unit of the Division of Business Affairs)

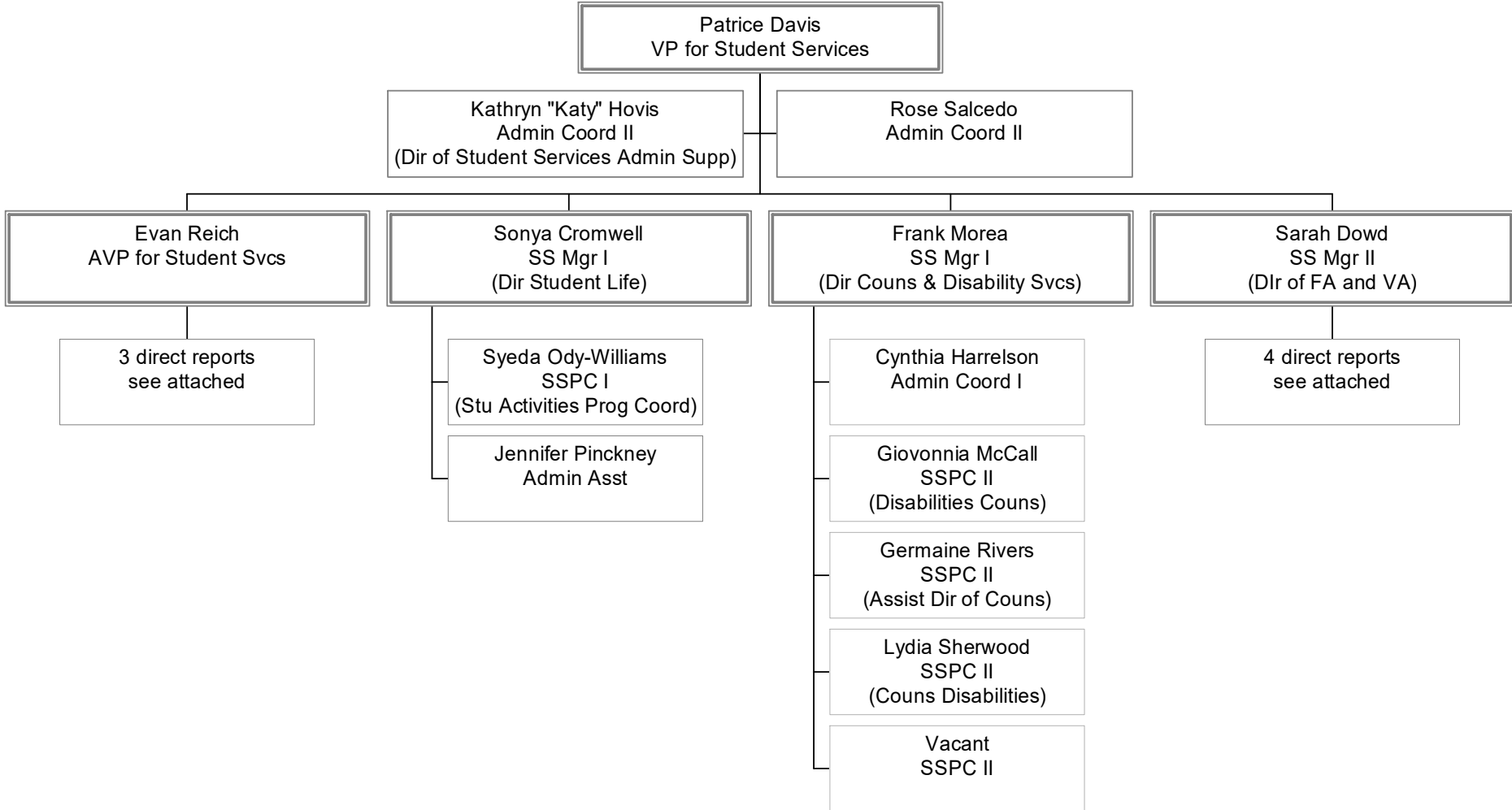


Public Safety

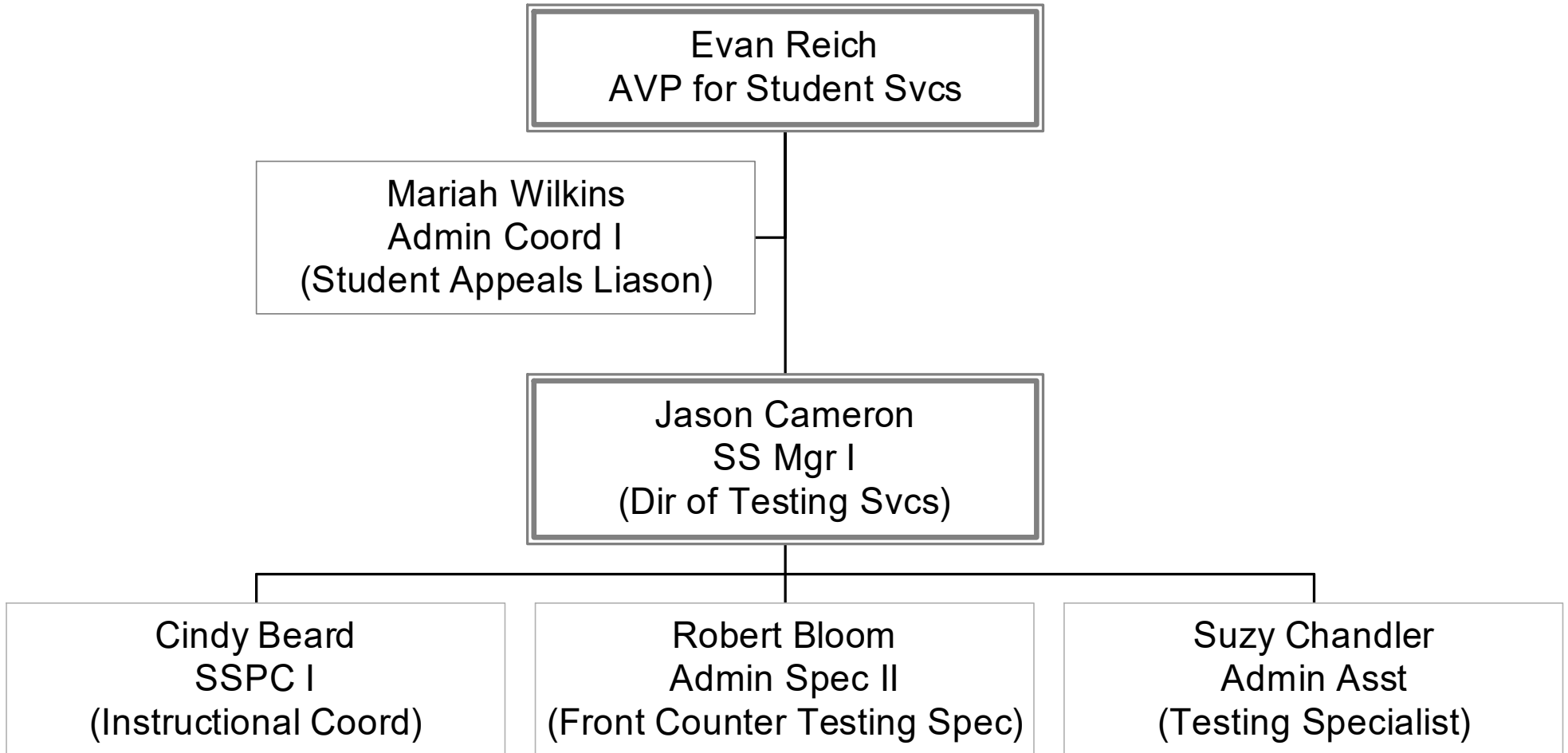
(a unit of the Division of Business Affairs)



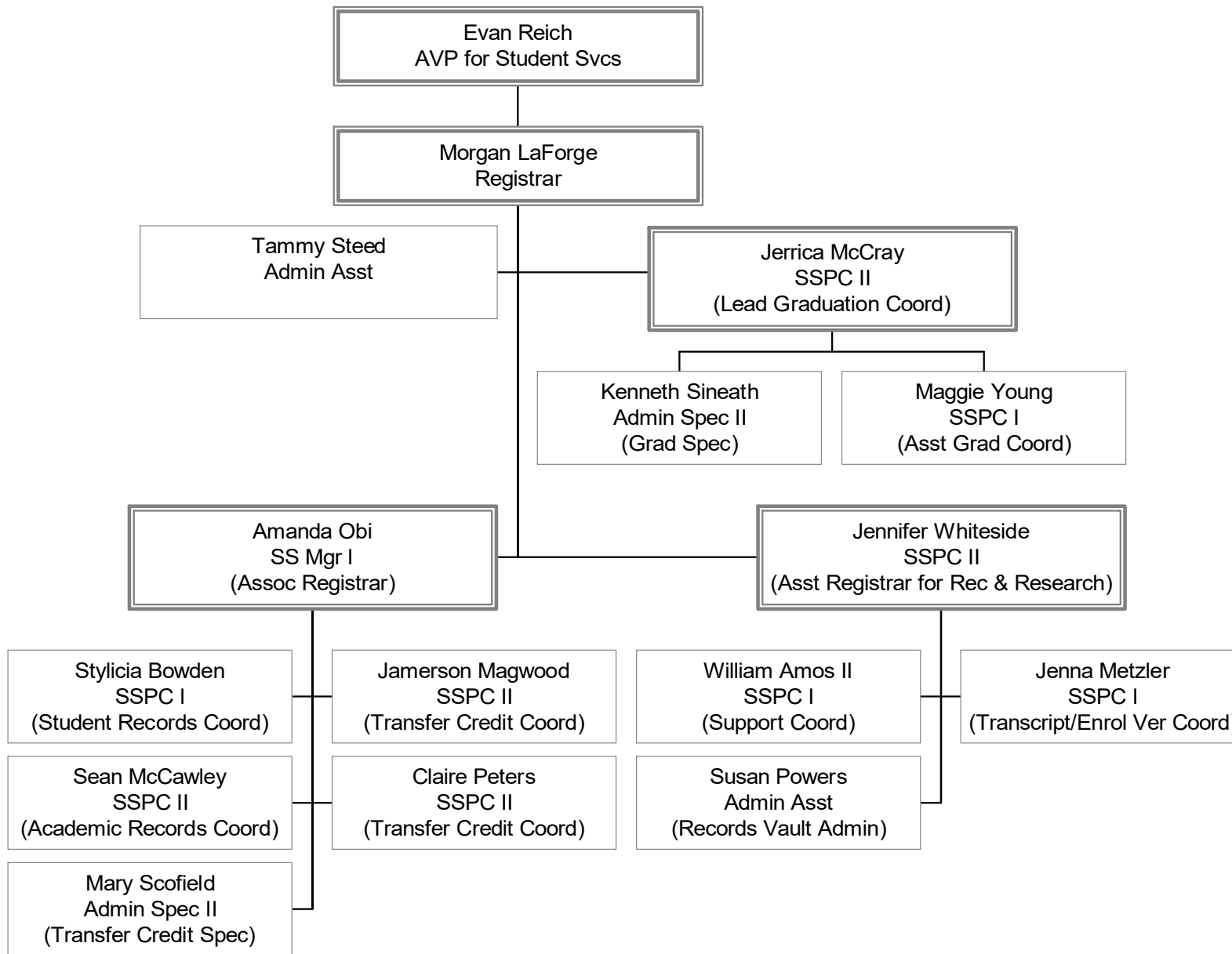
Student Services Division



Student Services Division

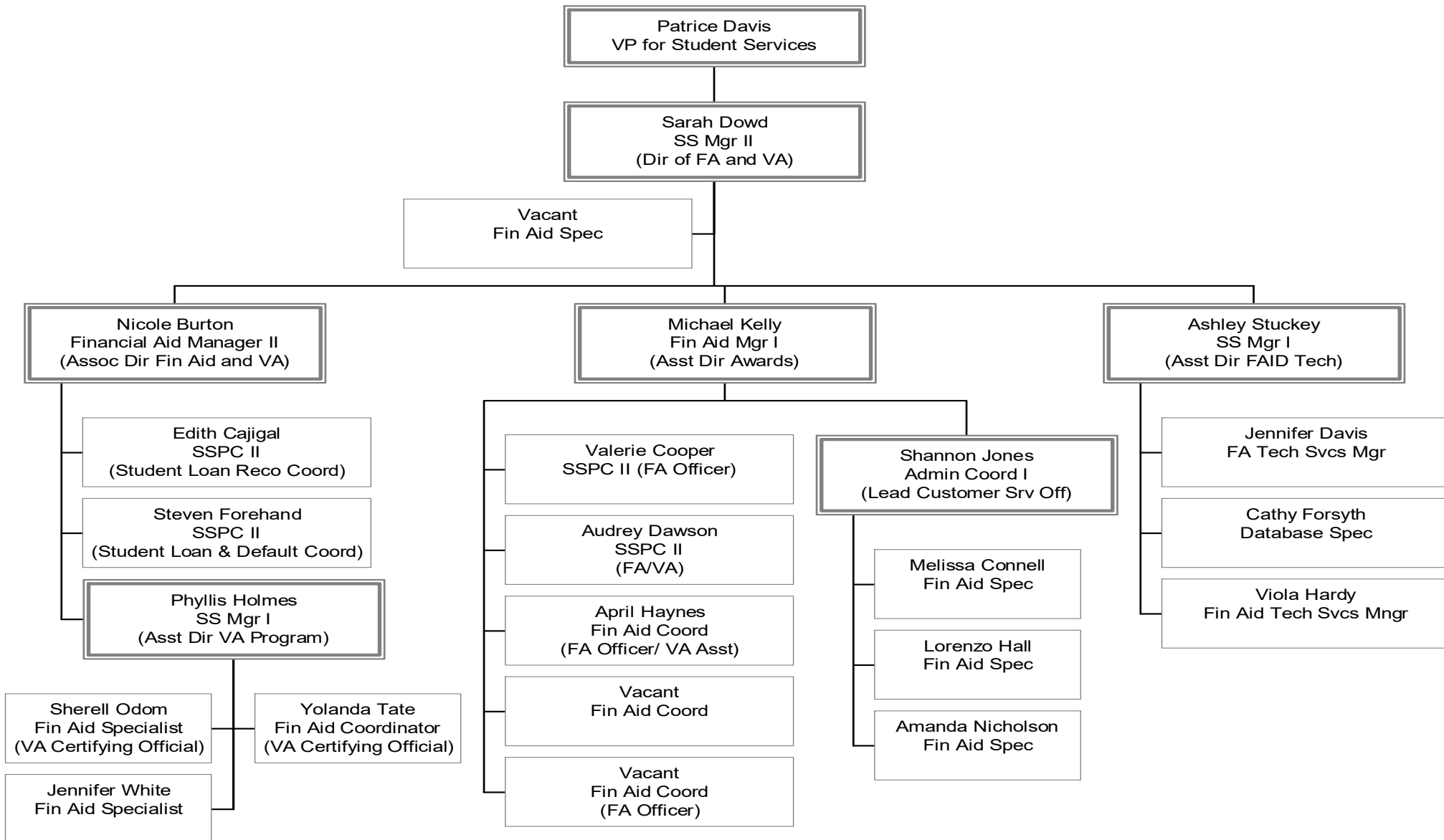


Registrar's Office (a unit of Student Services)

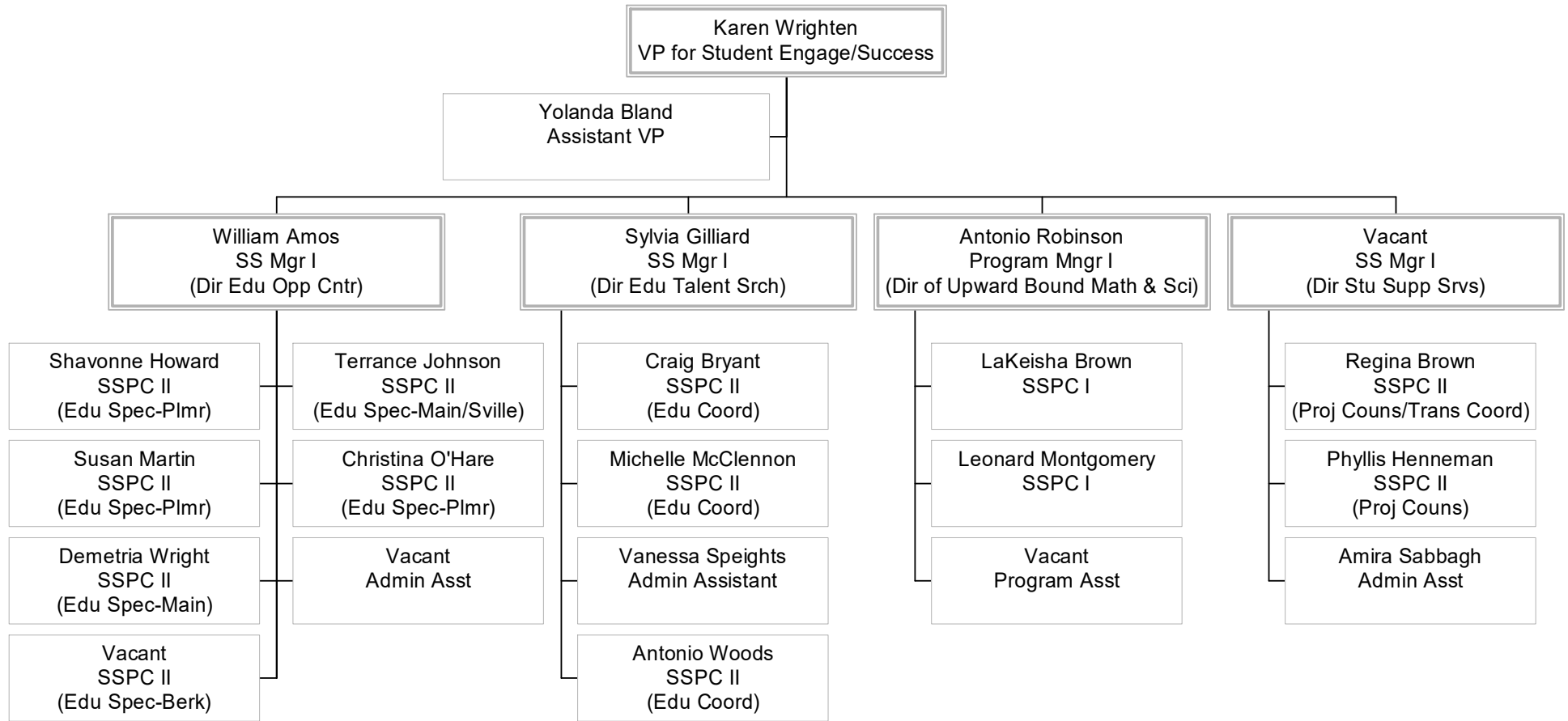


Enrollment Management

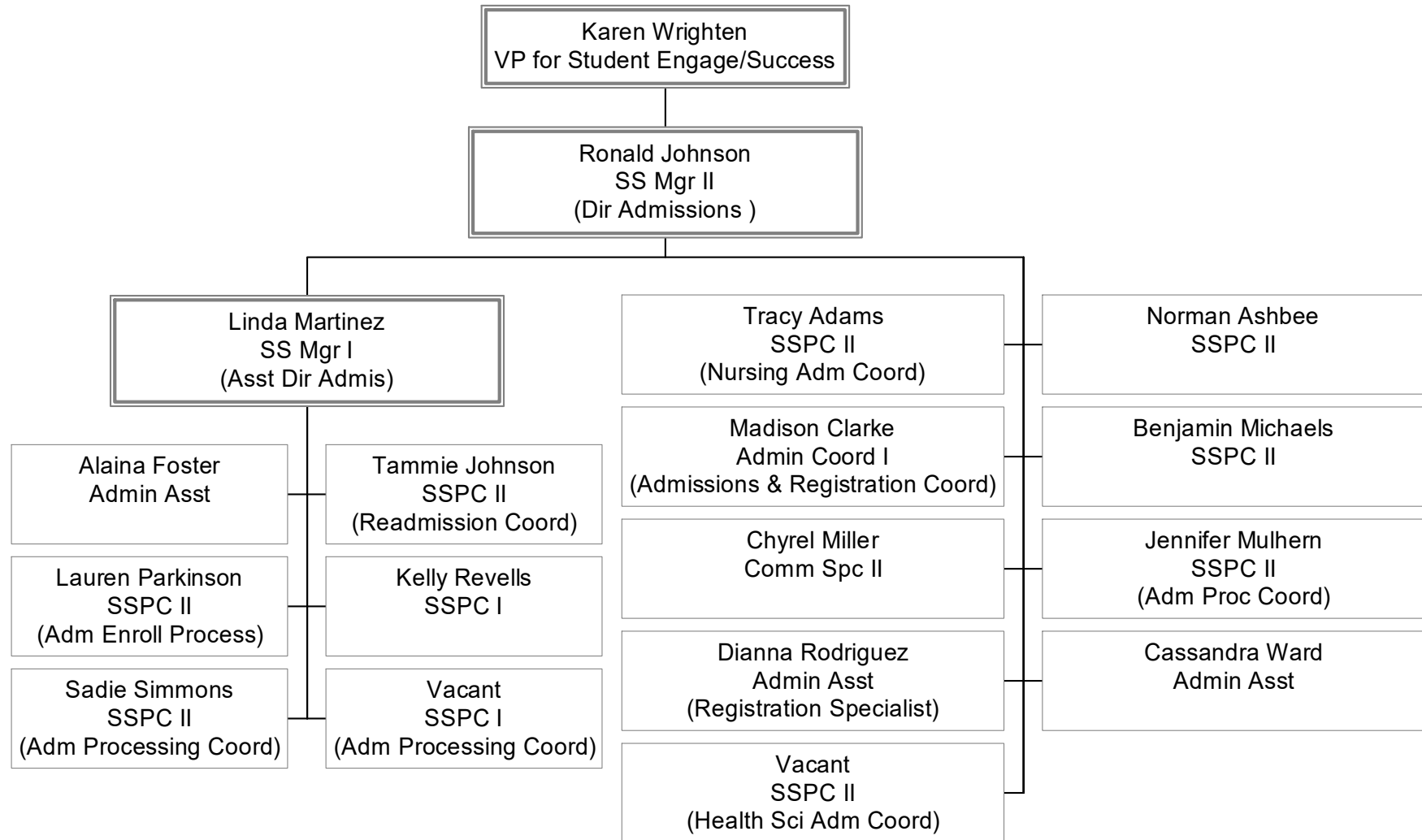
(a unit of Student Services)



Student Engagement & Success

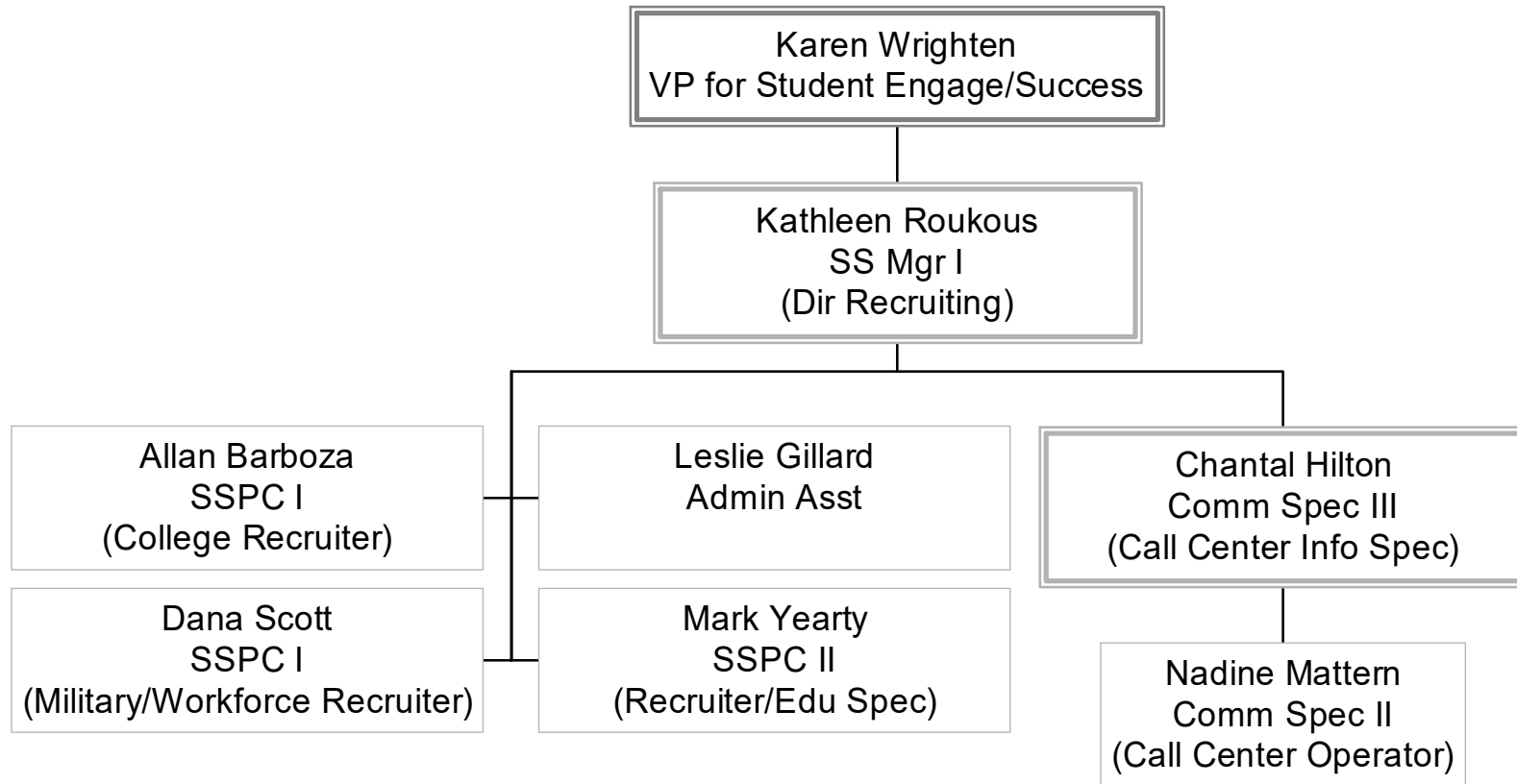


Admissions and Recruiting (units of Student Engagement & Success)



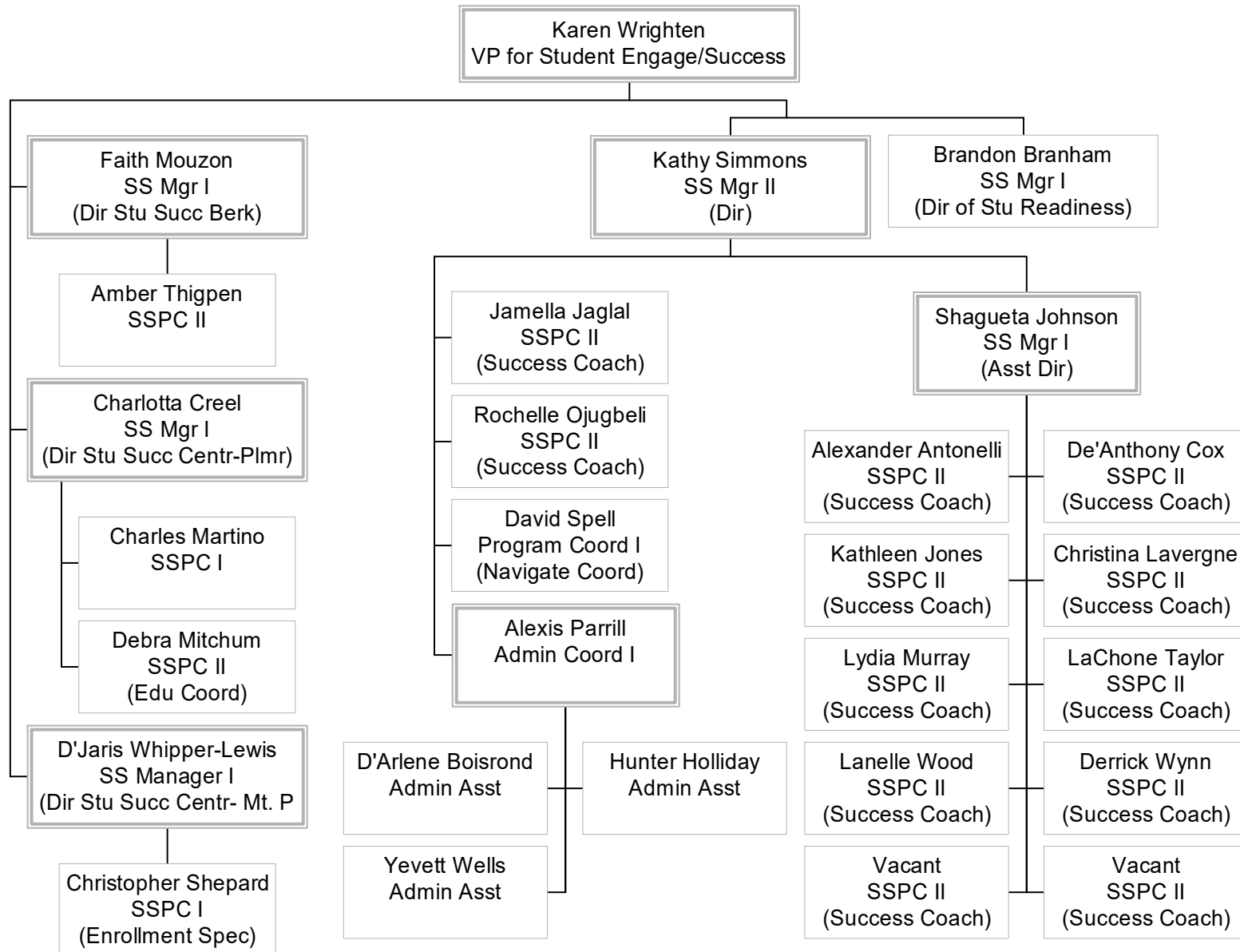
Recruiting

(units of Student Engagement & Success)



Student Success

(units of Student Engagement & Success)



Information Technology



MG (Marvin) Mitchum
VP for Information Technology

Kimberly Parler
Admin Coord II

Jeffrey Mattern
Project Mgr I

Joseph Potter
IT Mgr III
(Dir of Enterprise Services)

Joe Gibson
Assoc Acad Prog Dir
(Information Security Officer)

Portia Prioleau
IT Mgr III
(Dir of Customer Services)

Michael Kahly
IT Mgr III
(Dir of Infrastructure Services)

John Singleton
IT Manager I
(Programming Manager)

Michelle Baird
IT Manager I
(Operations Manager)

4 direct reports
see attached

4 direct reports
see attached

Ella Agrest
Info Sys/Bus Ana II

Robin Hanson
Info Sys/Bus Ana II
(App Ana/Prgmr)

Yuliya Denev
Info Sys/Bus Ana II

Timothy Galunas
Info Sys/Bus Ana II

Richard Wolfe
Info Sys/Bus Ana II
(App Ana/Prgmr)

Youxun Zhou
Info Sys/Bus Ana II

William Holt
Database Admin II

Jason Sessoms
Info Sys/Bus Ana II

Vacant
Info Sys/Bus Ana I
(CMS Admin)

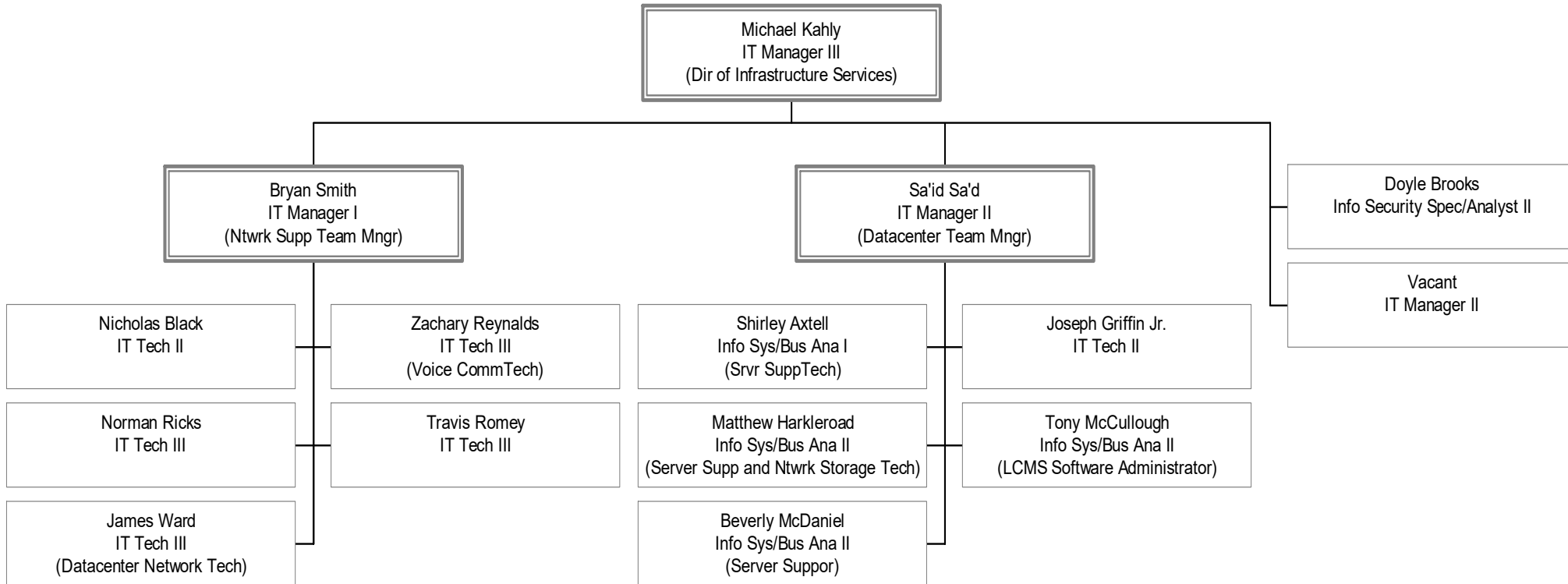
Vacant
Info Sys/Bus Ana II

Leetah-Noel Whitney
Info Sys/Bus Ana II

Vacant
Info Sys/Bus Ana I

Vacant
Info Sys/Bus Ana II

Information Technology IT Services



Information Technology IT Services

